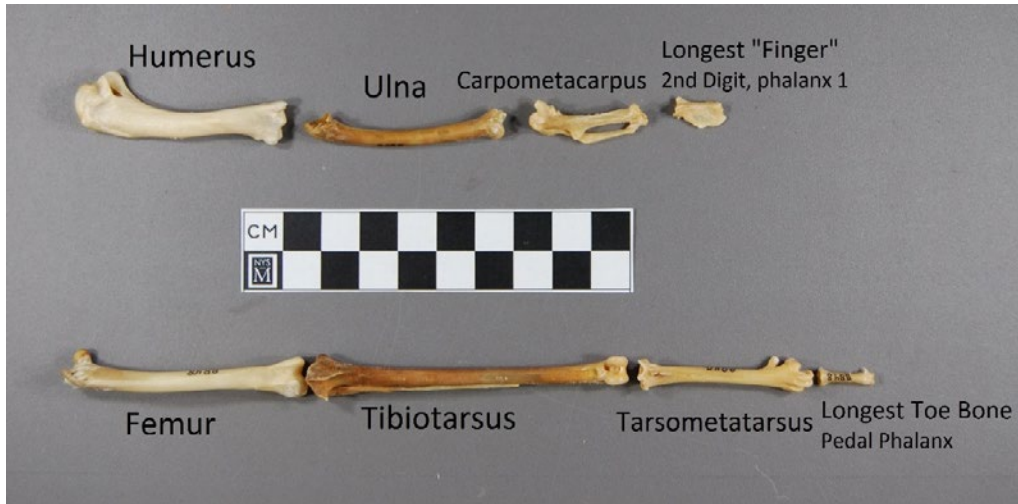


SPECIMEN PHOTOS

EXPLORING BIRD SKELETON EVOLUTION

Students should zoom in or out on each figure to make it appear on the screen at 100% (1 centimeter on the screen matches 1 centimeter on your ruler).



Ruffed Grouse, *Bonasa umbellus*, NYSM zo-8848.



Caspian Tern, *Hydroprogne caspia*, NYSM zo-9964.

SPECIMEN PHOTOS

EXPLORING BIRD SKELETON EVOLUTION



Cooper's Hawk, *Accipiter cooperii*, NYSM zo-8912.



Common Nighthawk, *Chordeiles minor*, NYSM zo-8975.

SPECIMEN PHOTOS

EXPLORING BIRD SKELETON EVOLUTION



Broad-winged Hawk, *Buteo platypterus*, NYSM zo-1780.