

SURFICIAL GEOLOGY OF THE LUDLOWVILLE 7.5-MINUTE QUADRANGLE, CAYUGA, SENECA AND TOMPKINS COUNTIES, NEW YORK

prepared by
Karl Backhaus, Andrew Kozlowski and James Leone

Supported in part by the U.S Geological Survey Cooperative Agreement Number G17AC00265
National Cooperative Geologic Mapping Program (STATEMAP)

DESCRIPTION OF MAP UNITS

Holocene

Af	Artificial Fill (Af) Surficial sediment composed of coarse/fine and or crushed rock anthropogenically transported and used for construction purposes.
Ha	Stratified silt, sand and gravel (Ha) Sorted and stratified silt, sand, and gravel, deposited by rivers and streams. May include cobbles and boulders. Inferred as post-glacial alluvium and includes modern channel, over-bank and fan deposits
Hw	Wetland Deposit (Hw) Peat, muck, marl, silt, clay or sand deposited in association with wetland environments. Various sediments can be present at transitional boundaries from one facies to another

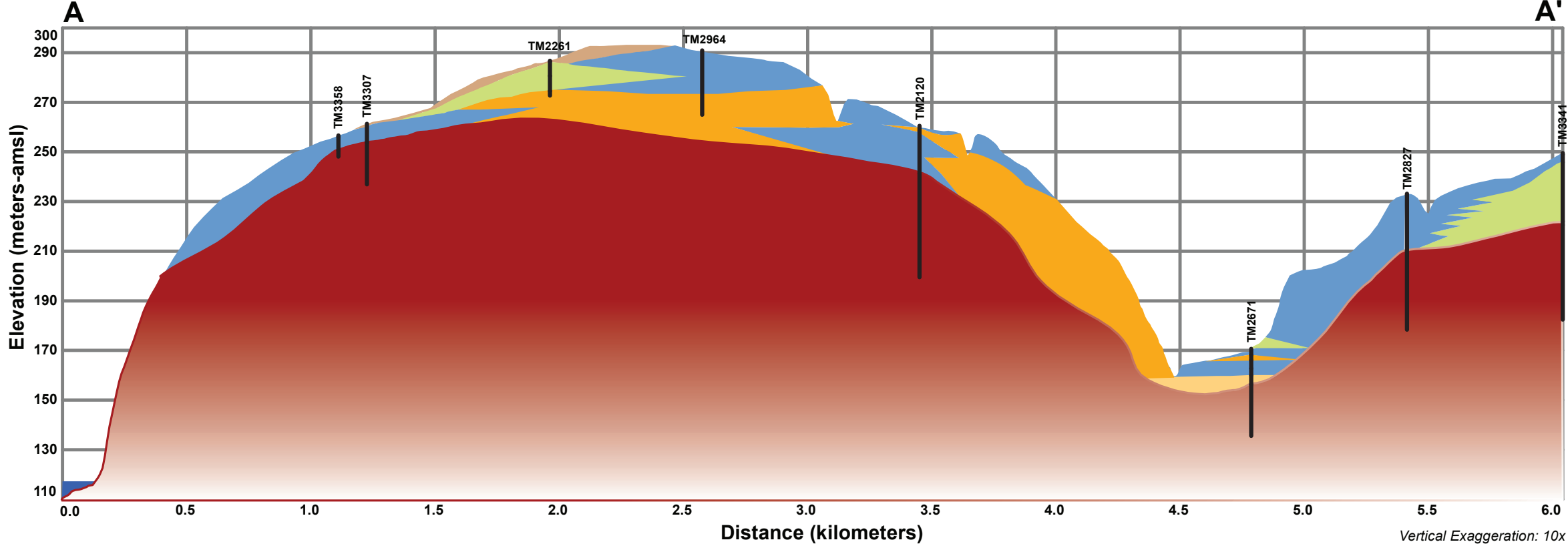
Pleistocene

Plsc	Silt and Clay (Plsc) Stratified, fine-grained sediment consisting of fine sand, silt and clay size particles. Inferred to be deposited in mid shore to deepwater settings of glacial lakes. May include marl, rythmites, and varves.
Pics-iw	Ice Contact Silt and Clay (Pics-iw) Stratified, fine-grained sediment consisting of fine sand, silt and clay size particles. Constrained to isolated pockets, inferred to be deposited in circular depressions within or on former ice sheets.
Psg	Stratified sand and gravel (Psg) Well-sorted and stratified sand and gravel. May include cobbles and boulders. Inferred to be delta, fan or lag deposits in glacial channels or near ice margins.
Pd	Diamicton (Pd) An admixture of unsorted sediment ranging from clay to boulders. Generally matrix supported, massive and clast-rich.
Pdcs	Diamicton (Pdcs) An admixture of unsorted sediment ranging from clay to boulders. Generally clast supported, massive and clast-rich.

Pre-Pleistocene

Br	Bedrock (Br) Non-glacially derived, hard rock, pre-pleistocene in age. May be covered up to a meter in diamicton, sand and gravel, or sand and clay in areas marked as Br.
-----------	--

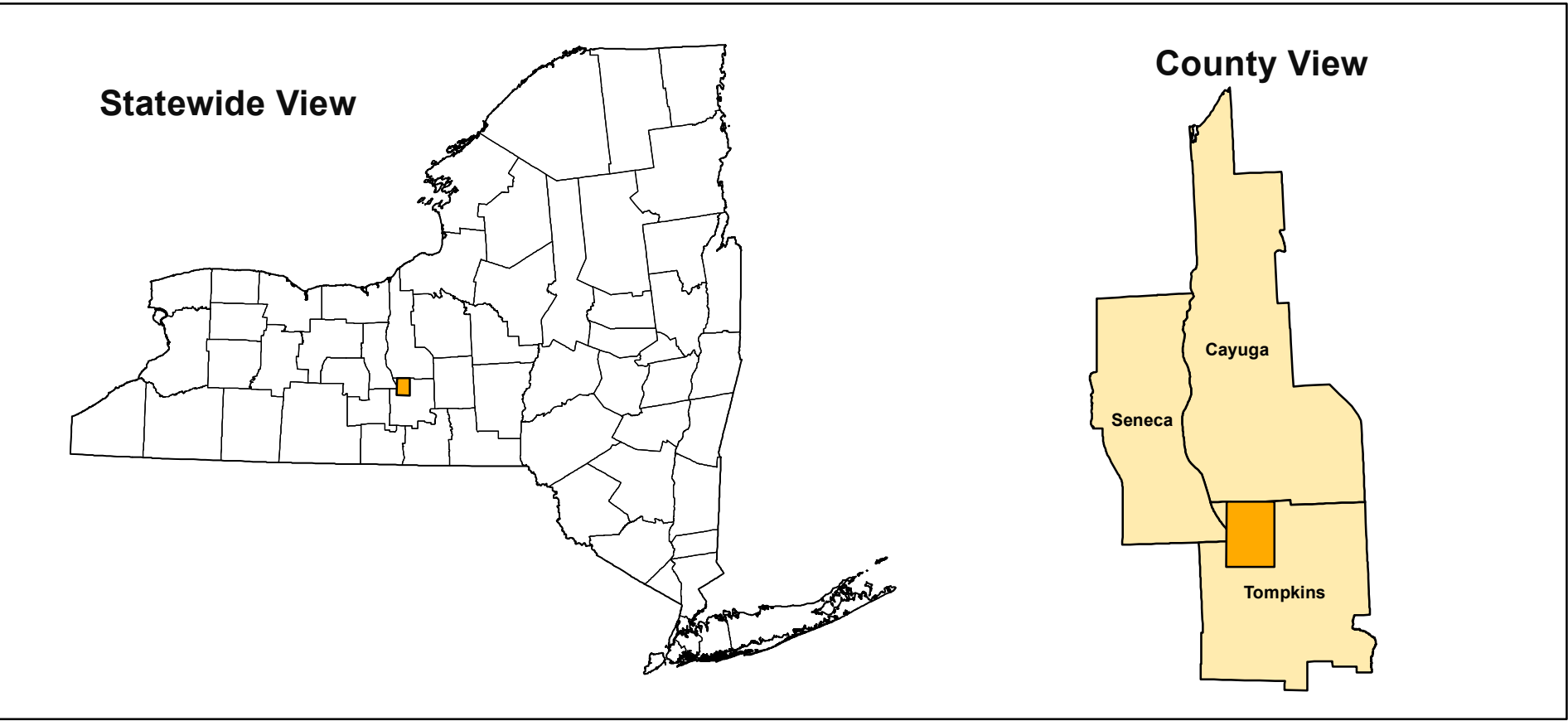
CROSS-SECTION A-A'



SYMBOLS

Streets	Water Bodies	NYSGS Sample Locations
Highways	Streams	NYSDOT Boring Locations
Railroads	Contours	NYSEDC Gas Well Location
County Lines	Cross-Section Line	Ice Margins
	NYSEDC Water Well Location	

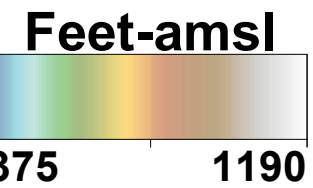
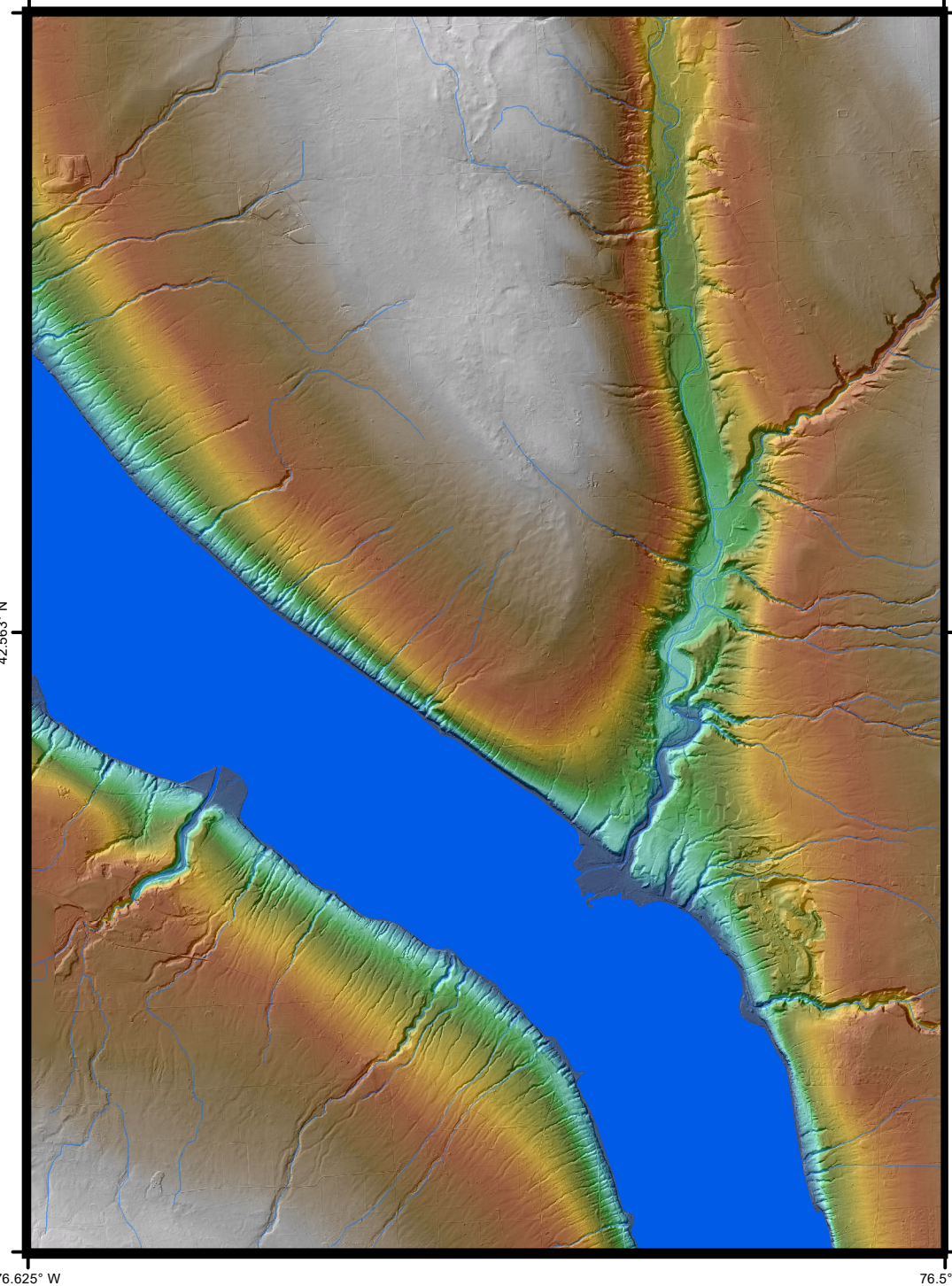
QUADRANGLE LOCATION



ADJOINING QUADRANGLES

Sheldrake	Genoa	Moravia
Tunawaburg	Ludlowville	West Groton
Middleburgh	Ilwaco West	Ilwaco East

QUADRANGLE ELEVATION



SURFICIAL GEOLOGY OF THE LUDLOWVILLE 7.5-MINUTE QUADRANGLE, CAYUGA, SENECA AND TOMPKINS COUNTIES, NEW YORK

Karl J. Backhaus, Andrew L. Kozlowski and James A. Leone
2018

NOTICE
This geologic map was funded in part by the USGS National Cooperative Geologic Mapping Program. A award number G17AC00265 in the year 2018.
The views and conclusions contained in this document are those of the authors and should not be interpreted as necessarily presenting the official policies, either expressed or implied, of the U.S. Government.
While every effort has been made to ensure the integrity of this digital map and the factual data upon which it is based, the New York State Education Department ("NYSED") makes no representation or warranty, expressed or implied, with respect to its accuracy, completeness, or usefulness for any particular purpose or scale. NYSED assumes no liability for damages resulting from the use of any information, apparatus, method, or process disclosed in this map and text, and urges independent site-specific verification of the information contained herein. Any use of trade, product, or firm names is for descriptive purposes only and does not imply endorsement by NYSED.