

# SURFICIAL GEOLOGY OF THE WEST GROTON 7.5-MINUTE QUADRANGLE, CAYUGA AND TOMPKINS COUNTIES, NEW YORK

prepared by  
James R. Leone and Karl J. Backhaus

Supported in part by the U.S Geological Survey Cooperative Agreement Number G17AC00265  
National Cooperative Geologic Mapping Program (STATEMAP)

## DESCRIPTION OF MAP UNITS

### Holocene

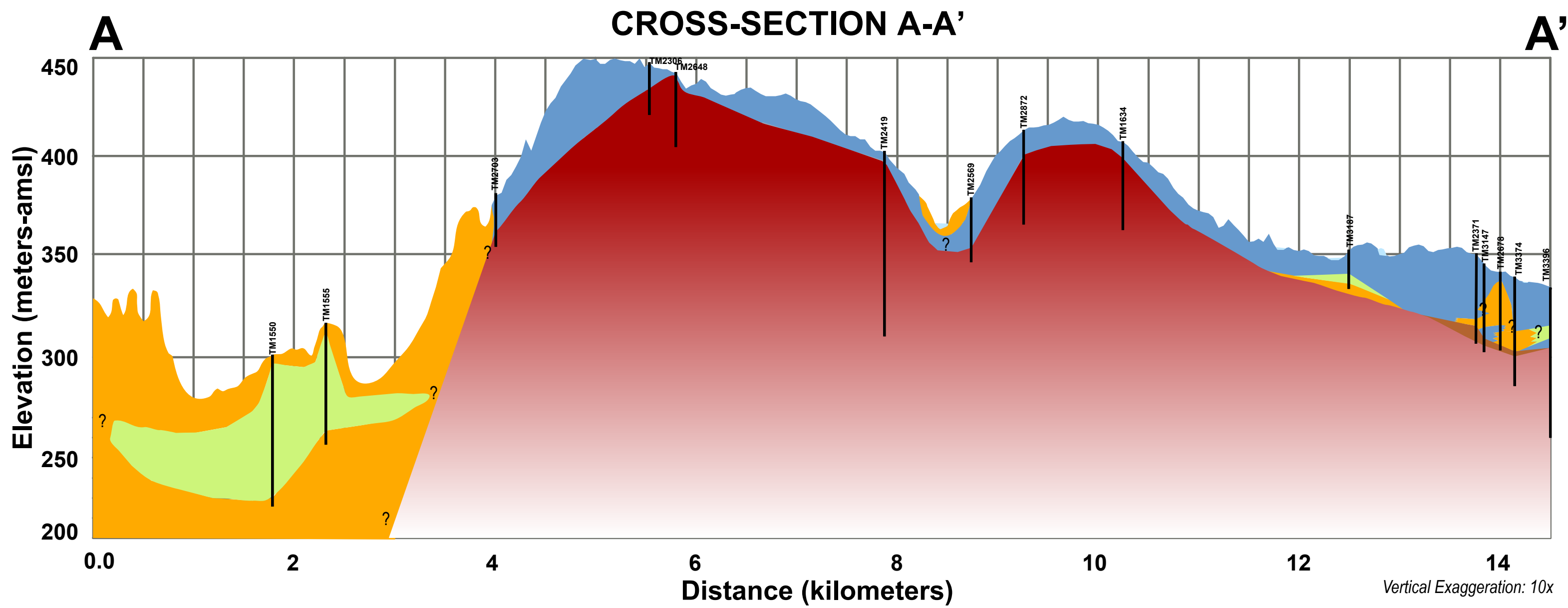
- Ha** **Stratified silt, sand and gravel (Ha)**  
Sorted and stratified silt, sand, and gravel, deposited by rivers and streams. May include cobbles and boulders. Inferred as post-glacial alluvium and includes modern channel, over-bank and fan deposits
- Hw** **Wetland Deposit (Hw)**  
Peat, muck, marl, silt, clay or sand deposited in association with wetland environments. Various sediments can be present at transitional boundaries from one facies to another

### Pleistocene

- Pics-iw** **Ice Contact Silt and Clay (Pics-iw)**  
Stratified, fine-grained sediment consisting of fine sand, silt and clay size particles. Constrained to isolated pockets, inferred to be deposited in circular depressions within or on former ice sheets.
- Ps** **Stratified Sand (Ps)**  
Well sorted and stratified sand, deposited by fluvial, lacustrine or eolian processes. Inferred as deposits associated with distal glacial environments.
- Psg** **Stratified sand and gravel (Psg)**  
Well-sorted and stratified sand and gravel. May include cobbles and boulders. Inferred to be delta, fan or lag deposits in glacial channels or near ice margins.
- Pd** **Diamicton (Pd)**  
An admixture of unsorted sediment ranging from clay to boulders. Generally matrix supported, massive and clast-rich.
- Pdcs** **Diamicton (Pdcs)**  
An admixture of unsorted sediment ranging from clay to boulders. Generally clast supported, massive and clast-rich.

### Pre-Pleistocene

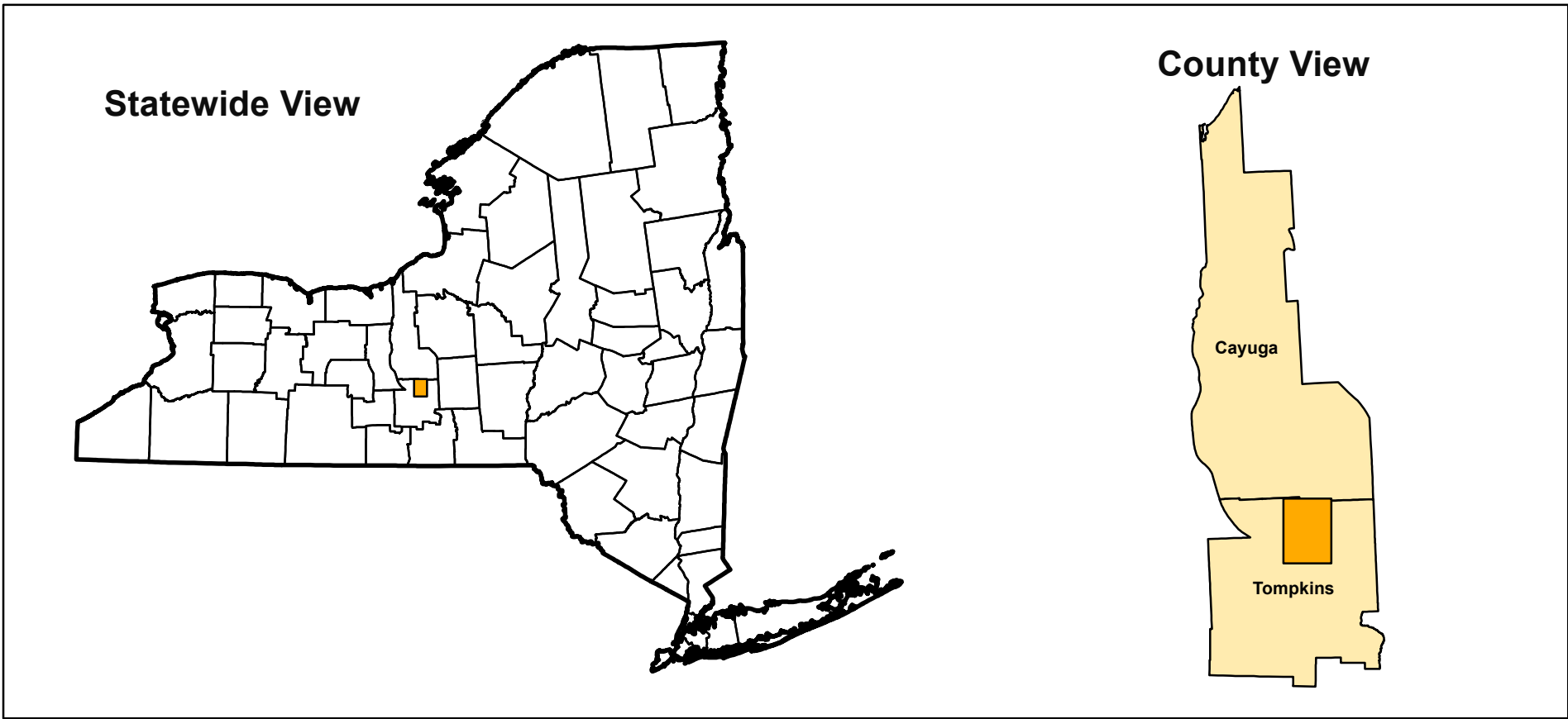
- Br** **Bedrock (Br)**  
Non-glacially derived, hard rock, pre-pleistocene in age. May be covered up to a meter in diamicton, sand and gravel, or sand and clay in areas marked as Br.



## SYMBOLS

Streets	Streams	NYSGS Sample Location
Highways	Contours	NYSDEC Water Well Location
County Line	Cross-Section Line	NYSDEC Boring Location
Water Bodies	Ice Margin	NYSDEC Oil Well Location

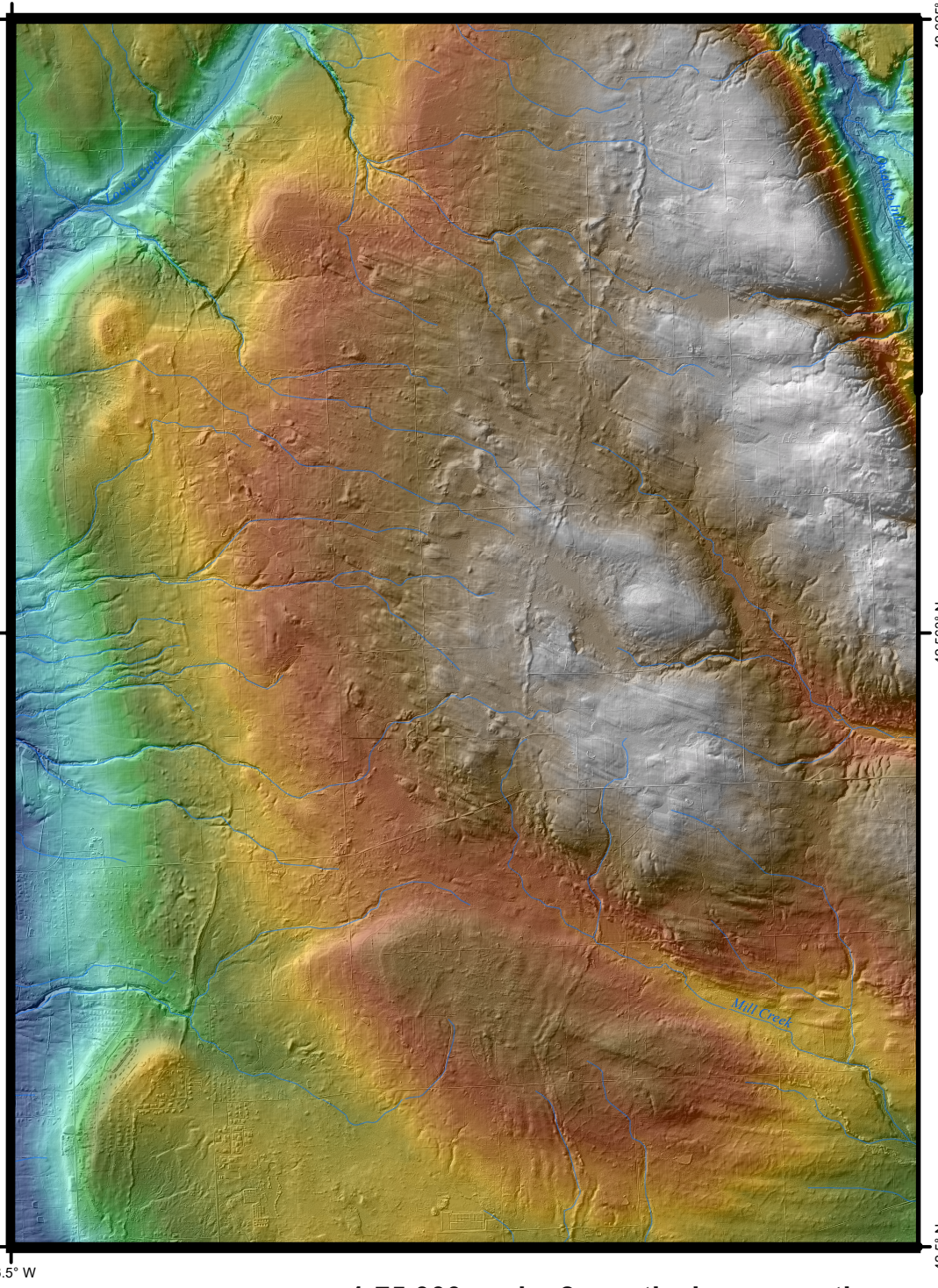
## QUADRANGLE LOCATION



## ADJOINING QUADRANGLES

Genoa	Moravia	Sempronius
Ludlowville	West Groton	Groton
Ithaca West	Ithaca East	Dryden

## QUADRANGLE ELEVATION



1:75,000 scale; 2x vertical exaggeration  
Shaded relief generated from 2000 Cayuga County New York NOAA Lidar and 2008 Tompkins County Soil and Water Conservation District LIDAR data sets.

# SURFICIAL GEOLOGY OF THE WEST GROTON 7.5-MINUTE QUADRANGLE, CAYUGA AND TOMPKINS COUNTIES, NEW YORK

James R. Leone, Karl J. Backhaus and Andrew L. Kozlowski  
2018

### NOTICE

This geologic map was funded in part by the USGS National Cooperative Geologic Mapping Program. A award number G17AC00265 in the year 2018.

The views and conclusions contained in this document are those of the authors and should not be interpreted as necessarily presenting the official policies, either expressed or implied, of the U.S. Government.

While every effort has been made to ensure the integrity of this digital map and the factual data upon which it is based, the New York State Education Department ("NYSED") makes no representation or warranty, expressed or implied, with respect to its accuracy, completeness, or usefulness for any particular purpose or scale. NYSED assumes no liability for damages resulting from the use of any information, apparatus, method or process disclosed in this map and text, and urges independent site-specific verification of the information contained herein. Any use of trade, product, or firm names is for descriptive purposes only and does not imply endorsement by NYSED.