

SURFICIAL GEOLOGY OF THE SHOHOLA 7.5-MINUTE QUADRANGLE, SULLIVAN COUNTY, NEW YORK

prepared by
James R. Leone and Karl J. Backhaus

Supported in part by the National Park Service Task Agreement P17AC01044 in the year 2017.

References Continued...

Fogarty, Mark, 1987, The surficial geology of the North Branch Callicoon Creek Valley, Sullivan County, New York, Master's Thesis, CUNY Queens
Hery, W.B., 1974 History of Glacial Lake Wanwarsing, southeastern New York, in Coates, D.R., ed., Glacial geomorphology: Binghamton, State University of New York Publications in Geomorphology, p 277 – 292.

DESCRIPTION OF MAP UNITS

Holocene

Af	Artificial Fill (Af) Surficial sediment composed of coarse/fine and or crushed rock anthropogenically transported and used for construction purposes.
Ha	Stratified silt, sand and gravel (Ha) Sorted and stratified silt, sand, and gravel, deposited by rivers and streams. May include cobbles and boulders. Inferred as post-glacial alluvium and includes modern channel, over-bank and fan deposits
Hw	Wetland Deposit (Hw) Peat, muck, marl, silt, clay or sand deposited in association with wetland environments. Various sediments can be present at transitional boundaries from one facies to another

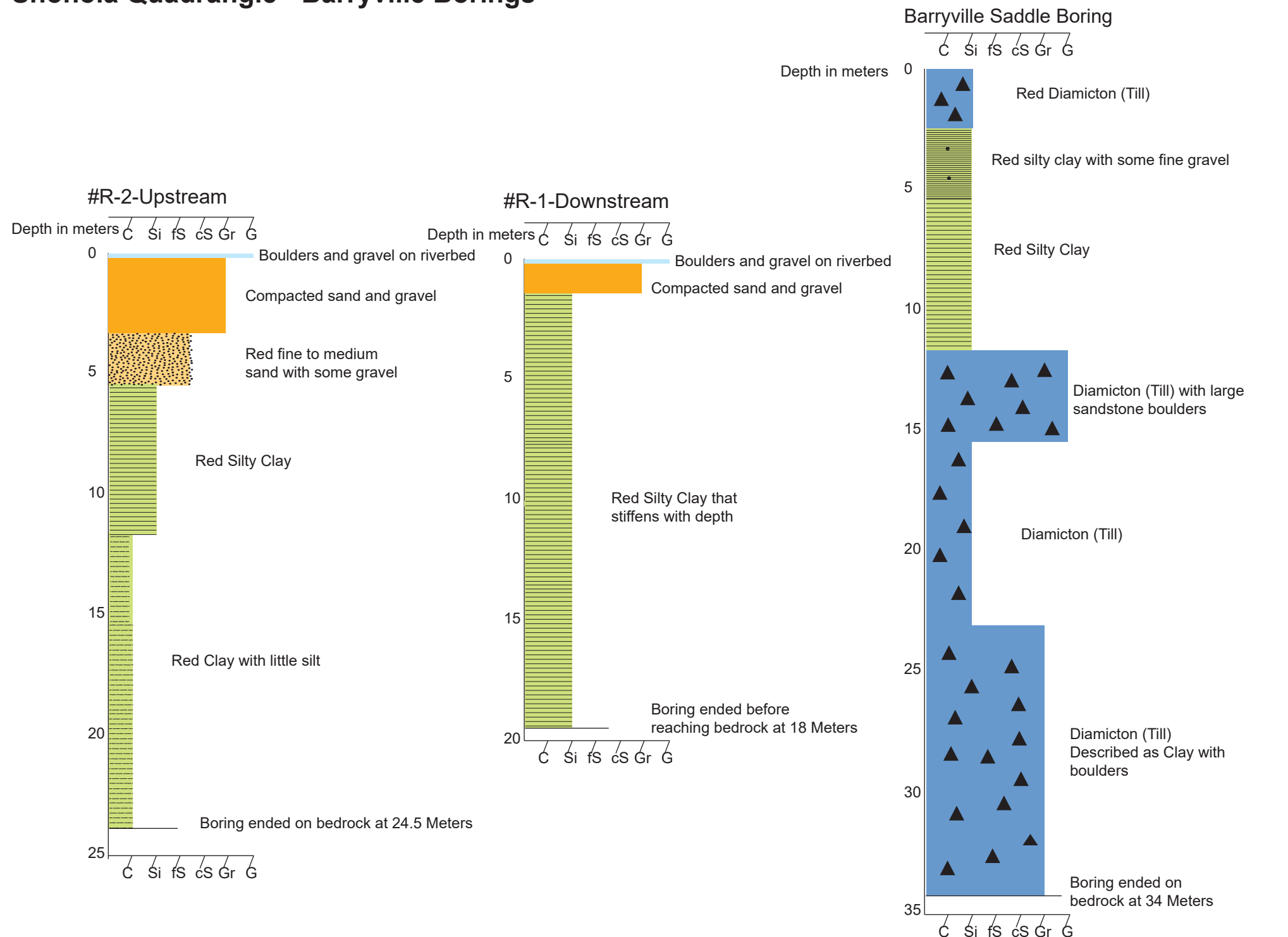
Pleistocene

Psg	Stratified sand and gravel (Psg) Well-sorted and stratified sand and gravel. May include cobbles and boulders. Inferred to be delta, fan or lag deposits in glacial channels or near former ice margins.
Pd	Diamicton (Pd) An admixture of unsorted sediment ranging from clay to boulders. Generally matrix supported, massive, clast-rich and interpreted as glacial till.

Pre-Pleistocene

Br	Bedrock (Br) Non-glacially derived, hard rock, pre-pleistocene in age. May be covered up to a meter in diamicton, sand and gravel, or sand and clay in areas marked as Br.
-----------	--

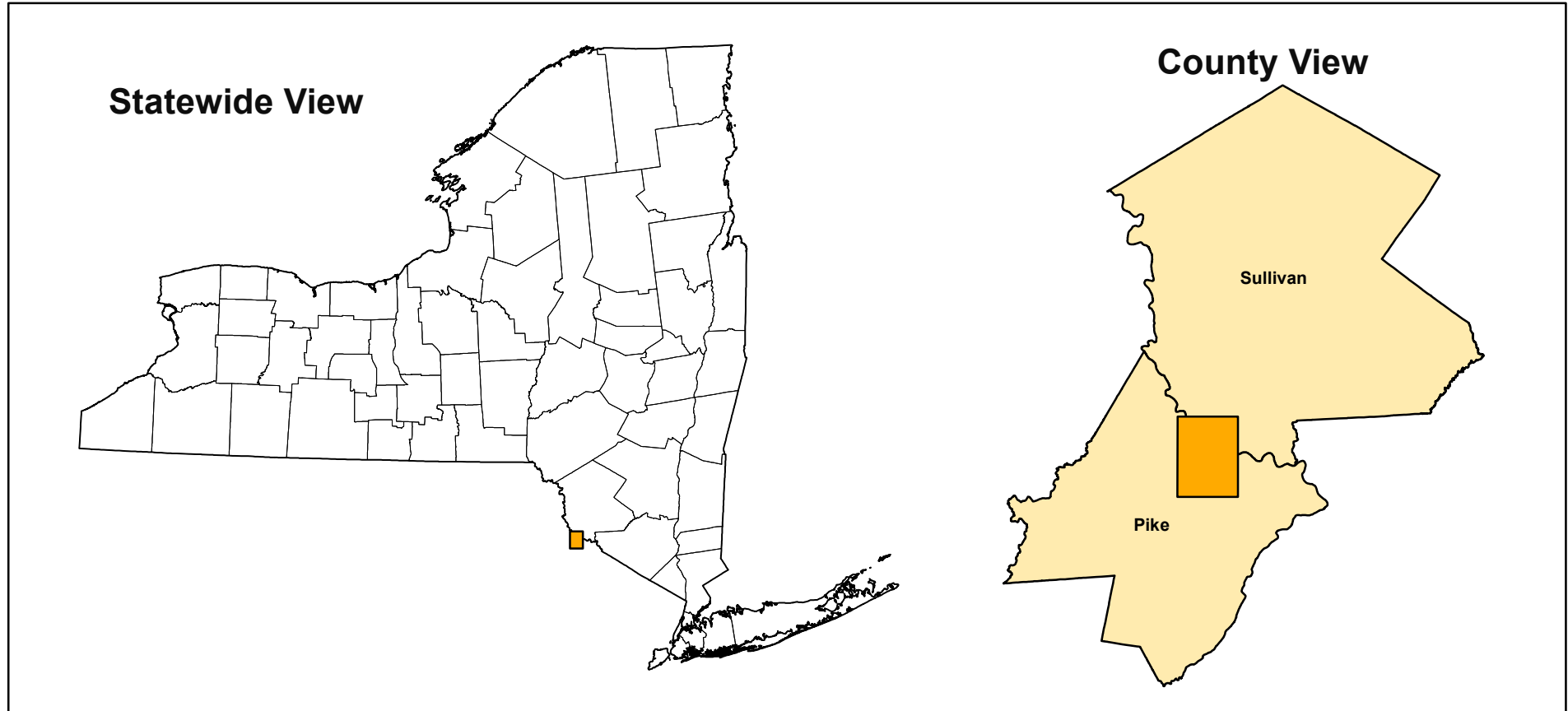
Shohola Quadrangle - Barryville Borings



SYMBOLS

Streets	Water Bodies	NYC Watershed Exploratory Borings
Streets	Streams	NYSGS Soil Sample Location
Railroads	Contours	NYSDEC Water Well Location
State Line		NYS DOT Boring Location

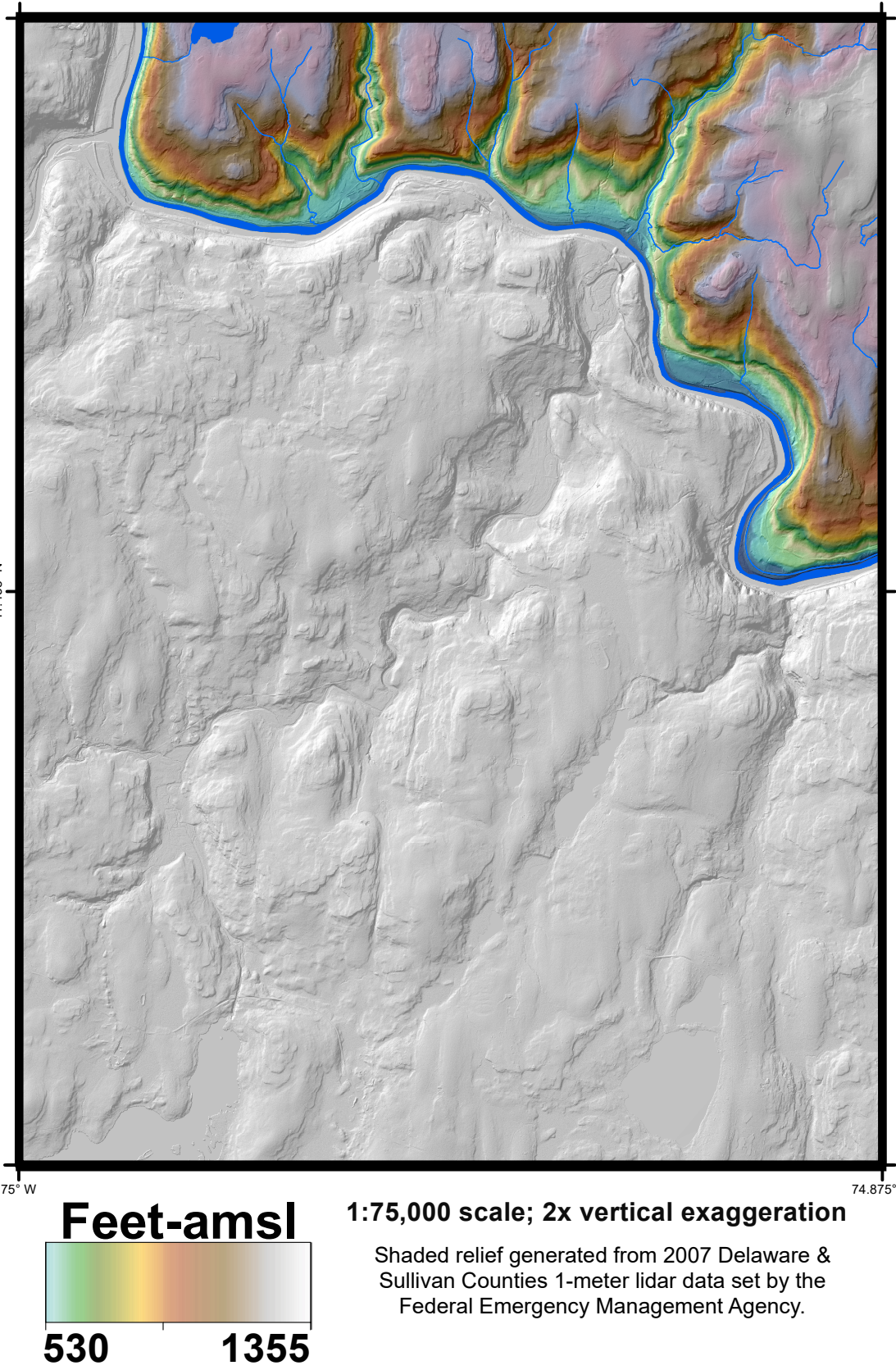
QUADRANGLE LOCATION



ADJOINING QUADRANGLES

Marrowaug	Eldred	Highland Lake
Rowland	Shohola	Port Eddy
Peka Pond	Edgemore	Milford

QUADRANGLE ELEVATION



NOTICE
This geologic map was funded in part by the National Park Service Task Agreement Number P17AC01044 for the Geologic Mapping in Upper Delaware Scenic and Recreational River Phase 2 in the year 2017.
The views and conclusions contained in this document are those of the authors and should not be interpreted as necessarily presenting the official policies, either expressed or implied, of the U.S. Government.
While every effort has been made to ensure the integrity of this digital map and the factual data upon which it is based, the New York State Education Department (NYSED) makes no representation or warranty, expressed or implied, with respect to its accuracy, completeness, or usefulness for any particular purpose or scale. NYSED assumes no liability for damages resulting from the use of any information, apparatus, method, or process disclosed in this map and text, and urges independent site-specific verification of the information contained herein. Any use of trade, product, or firm names is for descriptive purposes only and does not imply endorsement by NYSED.

SURFICIAL GEOLOGY OF THE SHOHOLA 7.5-MINUTE QUADRANGLE, SULLIVAN COUNTY, NEW YORK

James R. Leone
2019