

SURFICIAL GEOLOGY OF THE CLARKSVILLE 7.5-MINUTE QUADRANGLE, ALBANY COUNTY, NEW YORK

prepared by
Karl J. Backhaus and Andrew L. Kozlowski

Supported in part by the U.S Geological Survey Cooperative Agreement Number G18AC00232
National Cooperative Geologic Mapping Program (STATEMAP)

Holocene

Af	Artificial Fill (Af) Surficial sediment composed of coarse/fine and or crushed rock anthropogenically transported and used for construction purposes.
Ha	Stratified silt, sand and gravel (Ha) Sorted and stratified silt, sand, and gravel, deposited by rivers and streams. May include cobbles and boulders. Inferred as post-glacial alluvium and includes modern channel, over-bank and fan deposits
Hw	Wetland Deposit (Hw) Peat, muck, marl, silt, clay or sand deposited in association with wetland environments. Various sediments can be present at transitional boundaries from one facies to another
Hdc	Diamict Colluvium (Hdc) Unsorted and unstratified deposit of gravel, sand, silt, clay, with boulders/cobbles possible. Described as a mass-wasting deposit at the base of steep hillslopes and cliffs as part of a slump or hillslope failure.

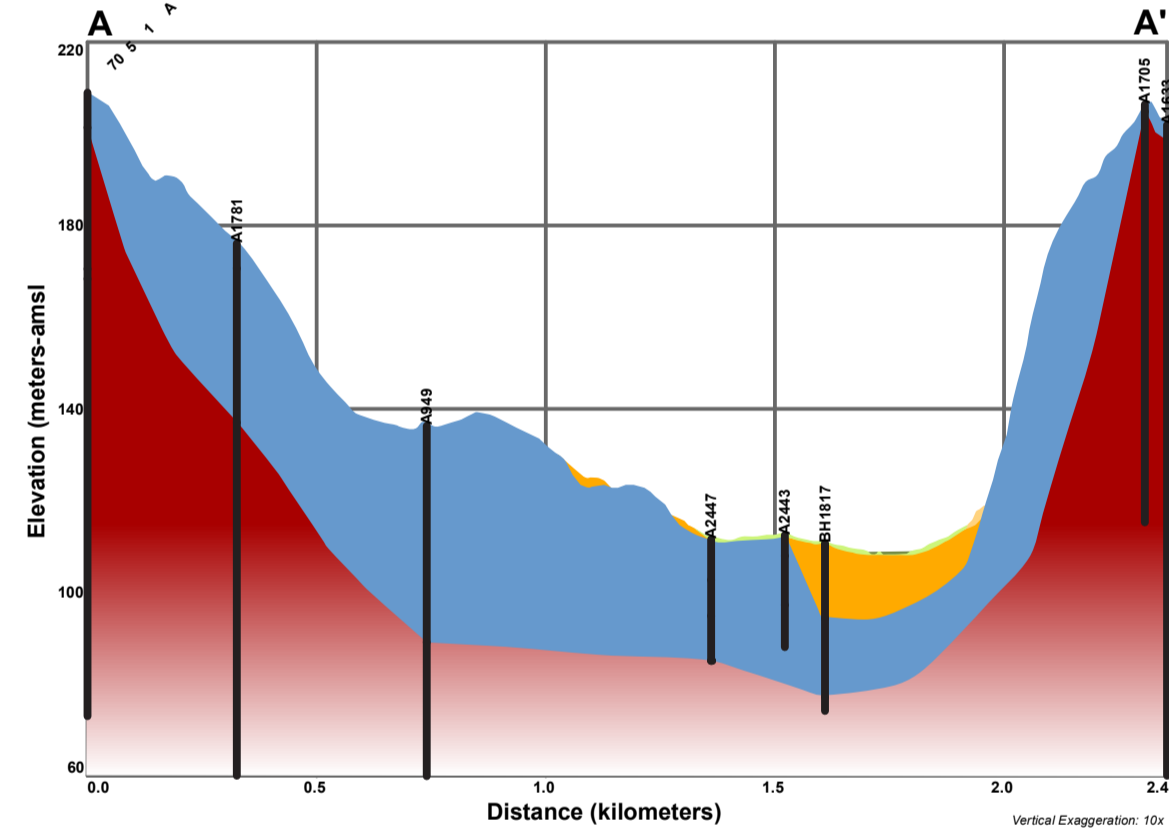
Pleistocene

Ps	Stratified Sand (Ps) Well sorted and stratified sand, deposited by fluvial, lacustrine or eolian processes. Inferred as deposits associated with distal glacial environments.
Plsc	Silt and Clay (Psc) Stratified, fine-grained sediment consisting of fine sand, silt and clay size particles. Inferred to be deposited in mid shore to deepwater settings of glacial lakes. May include marl, rythmites, and varves.
Pics	Cobbles to Sand (Pics) Stratified ice compacted deposits, variable coarse-grained sediment consisting of boulders to sand size particles. Inferred to be deposited along an ice-margin. May include, interbedded coarse lenses of gravel and clast supported diamictons (flow tills).
Pfd	Coarse-Grained Meltwater Deposits (Pfd) Well sorted-to poorly sorted cobbles, gravel and boulders. Inferred to be deposited as the result of high energy meltwater flood events. Deposits may contain finer-grained matrices and inverse grading or open work clast supported bedding and may be associated with landforms produced by Pleistocene flood events.
Psg	Stratified sand and gravel (Psg) Well-sorted and stratified sand and gravel. May include cobbles and boulders. Inferred to be delta, fan or lag deposits in glacial channels or near former ice margins.
Pd	Diamicton (Pd) An admixture of unsorted sediment ranging from clay to boulders. Generally matrix supported, massive and clast-rich.

Pre-Pleistocene

Br	Bedrock (Br) Non-glacially derived, hard rock, pre-pleistocene in age. May be covered up to a meter in diamicton, sand and gravel, or sand and clay in areas marked as Br.
-----------	--

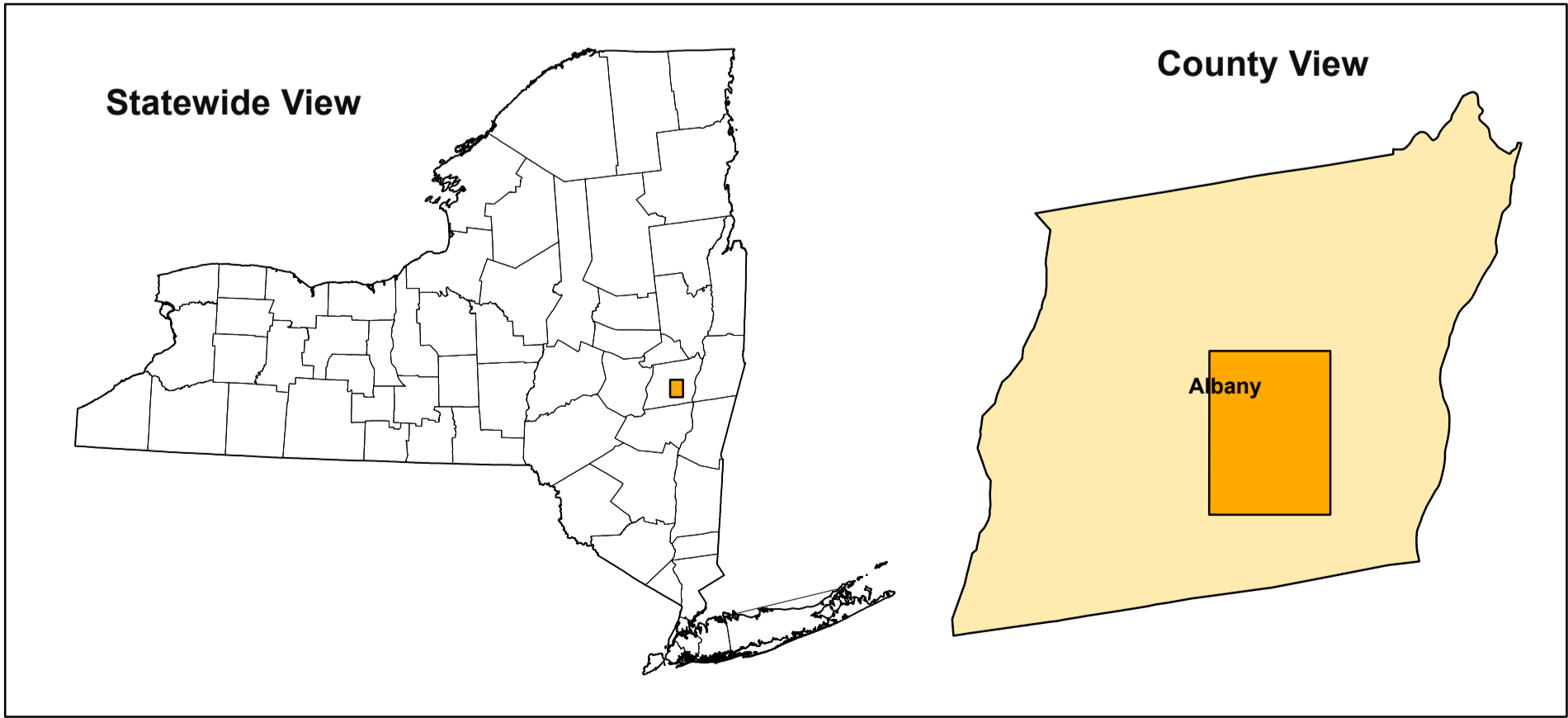
CROSS-SECTION A-A'



SYMBOLS

Streets	Streams	NYSGS Soil Sample Location
Highways	Contours	NYSDEC Water Well Location
Railroads	Cross-Section Line	NYSGS Borehole Location
ClarksV_WtrBodies	Ice Margin	NYSDEC Boring Location

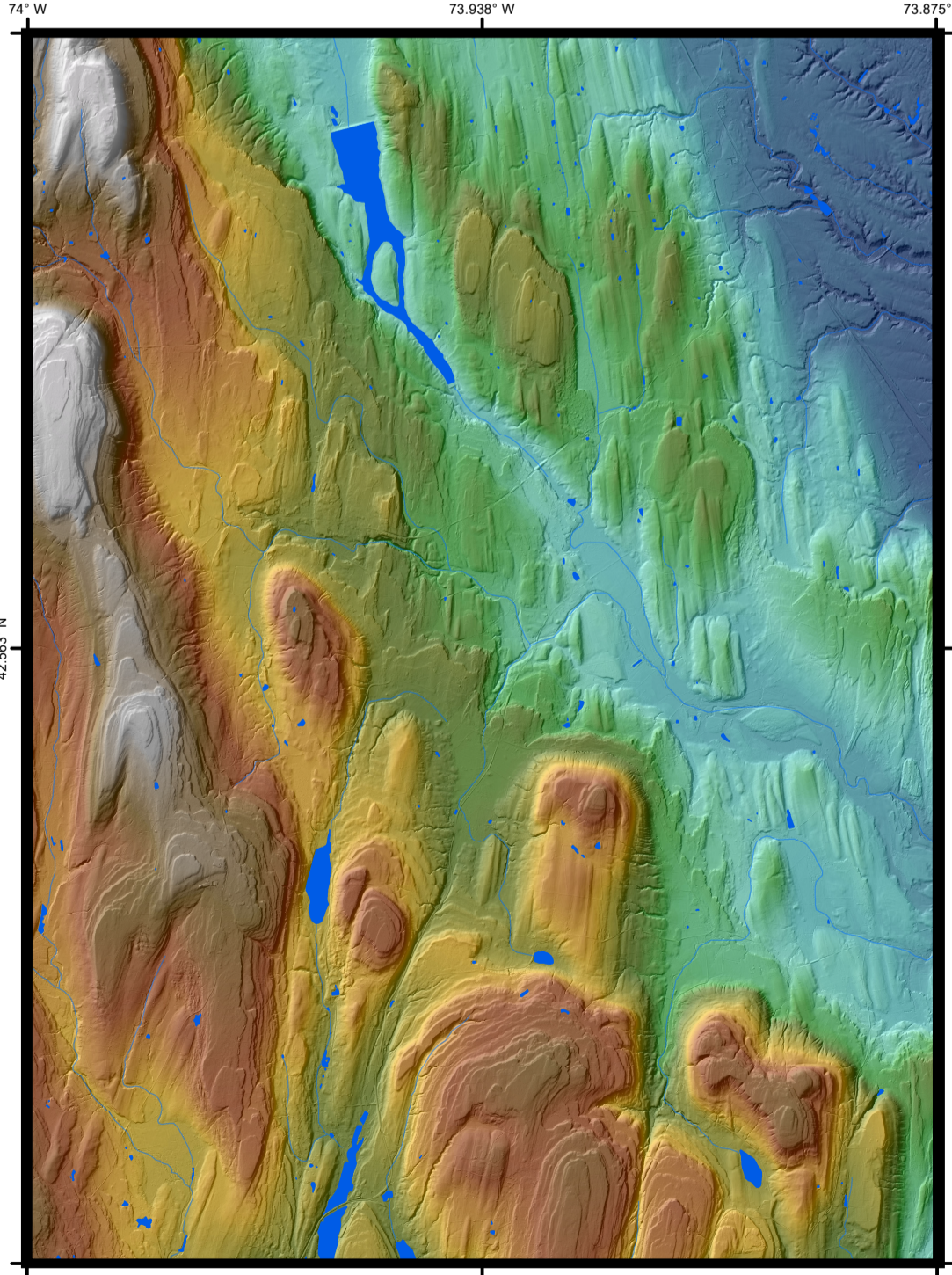
QUADRANGLE LOCATION



ADJOINING QUADRANGLES

Altamont	Voorheesville	Albany
Westerlo	Clarksville	Delmar
Greenville	Albany	Ravena

QUADRANGLE ELEVATION



SURFICIAL GEOLOGY OF THE CLARKSVILLE 7.5-MINUTE QUADRANGLE, ALBANY COUNTY, NEW YORK

Karl J. Backhaus, Andrew L. Kozlowski and James R. Leone
2019

NOTICE
This geologic map was funded in part by the USGS National Cooperative Geologic Mapping Program STATEMAP award number: G18AC00232 in the year 2019.
The views and conclusions contained in this document are those of the authors and should not be interpreted as necessarily presenting the official policies, either expressed or implied, of the U.S. Government.
While every effort has been made to ensure the integrity of this digital map and the factual data upon which it is based, the New York State Education Department ("NYSED") makes no representation or warranty, expressed or implied, with respect to its accuracy, completeness, or usefulness for any particular purpose or scale. NYSED assumes no liability for damages resulting from the use of any information, apparatus, method, or process disclosed in this map and text, and urges independent site-specific verification of the information contained herein. Any use of trade, product, or firm names is for descriptive purposes only and does not imply endorsement by NYSED.