

SURFICIAL GEOLOGY OF THE ALBANY COUNTY PORTION OF THE NISKAYUNA 7.5-MINUTE QUADRANGLE, NEW YORK

prepared by
Karl J. Backhaus

Supported in part by the U.S Geological Survey Cooperative Agreement Number G19AC00249
National Cooperative Geologic Mapping Program (STATEMAP)

DESCRIPTION OF MAP UNITS

Holocene

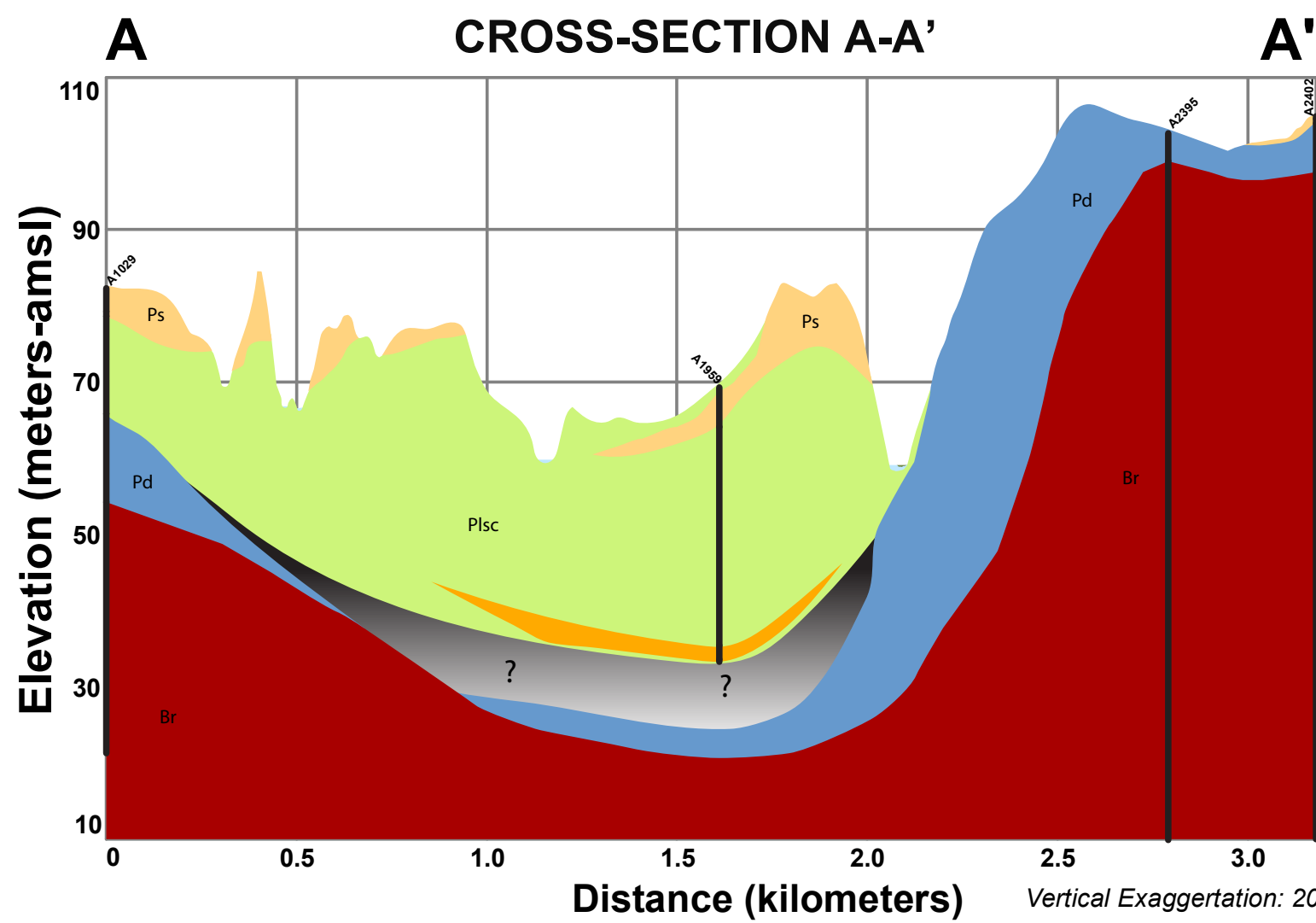
Af	Artificial Fill (Af) Surficial sediment composed of coarse/fine and or crushed rock anthropogenically transported and used for construction purposes.
Ha	Stratified silt, sand and gravel (Ha) Sorted and stratified silt, sand, and gravel, deposited by rivers and streams. May include cobbles and boulders. Inferred as post-glacial alluvium and includes modern channel, over-bank and fan deposits
Hw	Wetland Deposit (Hw) Peat, muck, marl, silt, clay or sand deposited in association with wetland environments. Various sediments can be present at transitional boundaries from one facies to another

Pleistocene

Plsc	Silt and Clay (Psc) Stratified, fine-grained sediment consisting of fine sand, silt and clay size particles. Inferred to be deposited in mid shore to deepwater settings of glacial lakes. May include marl, rythmites, and varves.
Ps	Stratified Sand (Ps) Well sorted and stratified sand, deposited by fluvial, lacustrine or eolian processes. Inferred as deposits associated with distal glacial environments.
Pics	Cobbles to Sand (Pics) Stratified ice contacted deposits, variable coarse-grained sediment consisting of boulders to sand size particles. Inferred to be deposited along an ice-margin. May include, interbedded coarse lenses of gravel and clast supported diamictons (flow tills).
Psg	Stratified sand and gravel (Psg) Well-sorted and stratified sand and gravel. May include cobbles and boulders. Inferred to be delta, fan or lag deposits in glacial channels or near ice margins.
Pd	Diamicton (Pd) An admixture of unsorted sediment ranging from clay to boulders. Generally matrix supported, massive and clast-rich.

Pre-Pleistocene

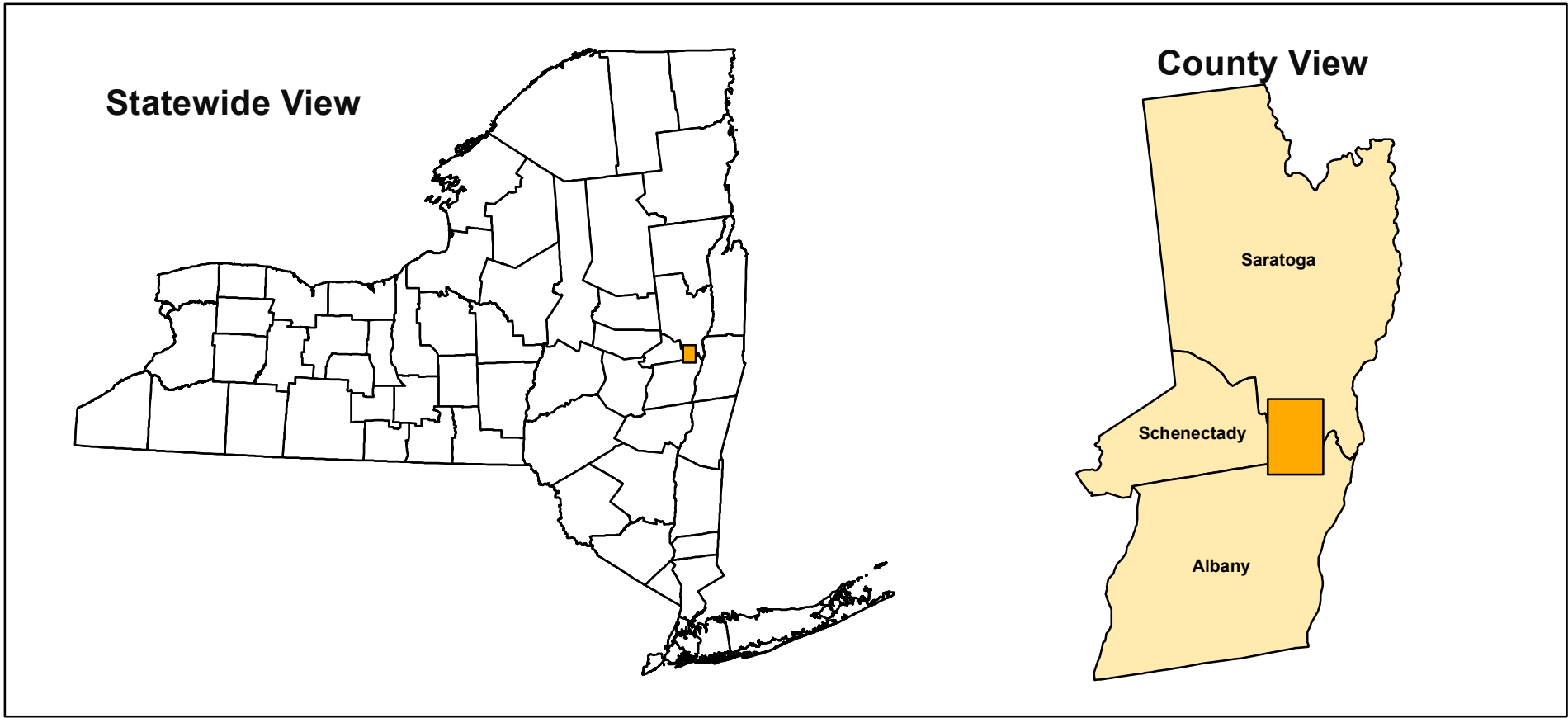
Br	Bedrock (Br) Non-glacially derived, hard rock, pre-pleistocene in age. May be covered up to a meter in diamicton, sand and gravel, or sand and clay in areas marked as Br.
-----------	--



SYMBOLS

Streets	Streams	NYSGS Soil Sample Location
Highways	Contours	NYSDEC Water Well Location
County Line	Cross-Section Line	NYSDOT Boring Location
Airport Runway	Unmapped Area	Drumlins
Water Bodies		Ice Margin

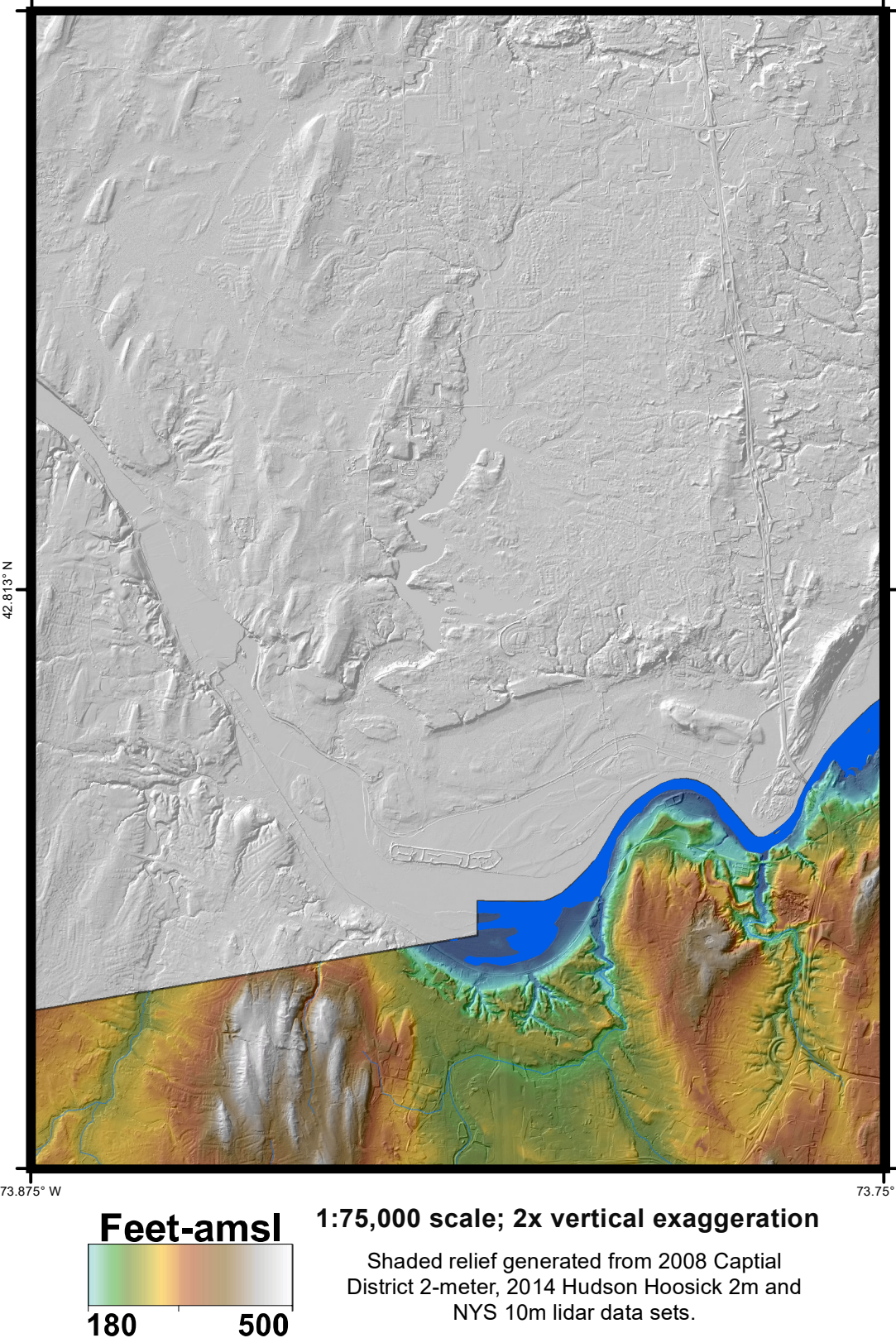
QUADRANGLE LOCATION



ADJOINING QUADRANGLES

Burnt Hills	Round Lake	Mechanicville
Schenectady	Niskayuna	Troy North
Voorheesville	Albany	Troy South

QUADRANGLE ELEVATION



SURFICIAL GEOLOGY OF THE ALBANY COUNTY PORTION OF THE NISKAYUNA 7.5-MINUTE QUADRANGLE, NEW YORK

Karl J. Backhaus, Robert J. Dineen and Andrew L. Kozlowski
2020

NOTICE

This geologic map was funded in part by the USGS National Cooperative Geologic Mapping Program STATEMAP award number: G19AC00249 in the year 2020.

The views and conclusions contained in this document are those of the authors and should not be interpreted as necessarily presenting the official policies, either expressed or implied, of the U.S. Government.

While every effort has been made to ensure the integrity of this digital map and the factual data upon which it is based, the New York State Education Department ("NYSED") makes no representation or warranty, expressed or implied, with respect to its accuracy, completeness, or usefulness for any particular purpose or scale. NYSED assumes no liability for damages resulting from the use of any information, apparatus, method, or process disclosed in this map and text, and urges independent site-specific verification of the information contained herein. Any use of trade, product, or firm names is for descriptive purposes only and does not imply endorsement by NYSED.