

SURFICIAL GEOLOGY OF THE ALBANY COUNTY PORTION OF THE SCHENECTADY 7.5-MINUTE QUADRANGLE, NEW YORK

prepared by
Karl J. Backhaus and Andrew L. Kozlowski

Supported in part by the U.S Geological Survey Cooperative Agreement Number G19AC00249
National Cooperative Geologic Mapping Program (STATEMAP)

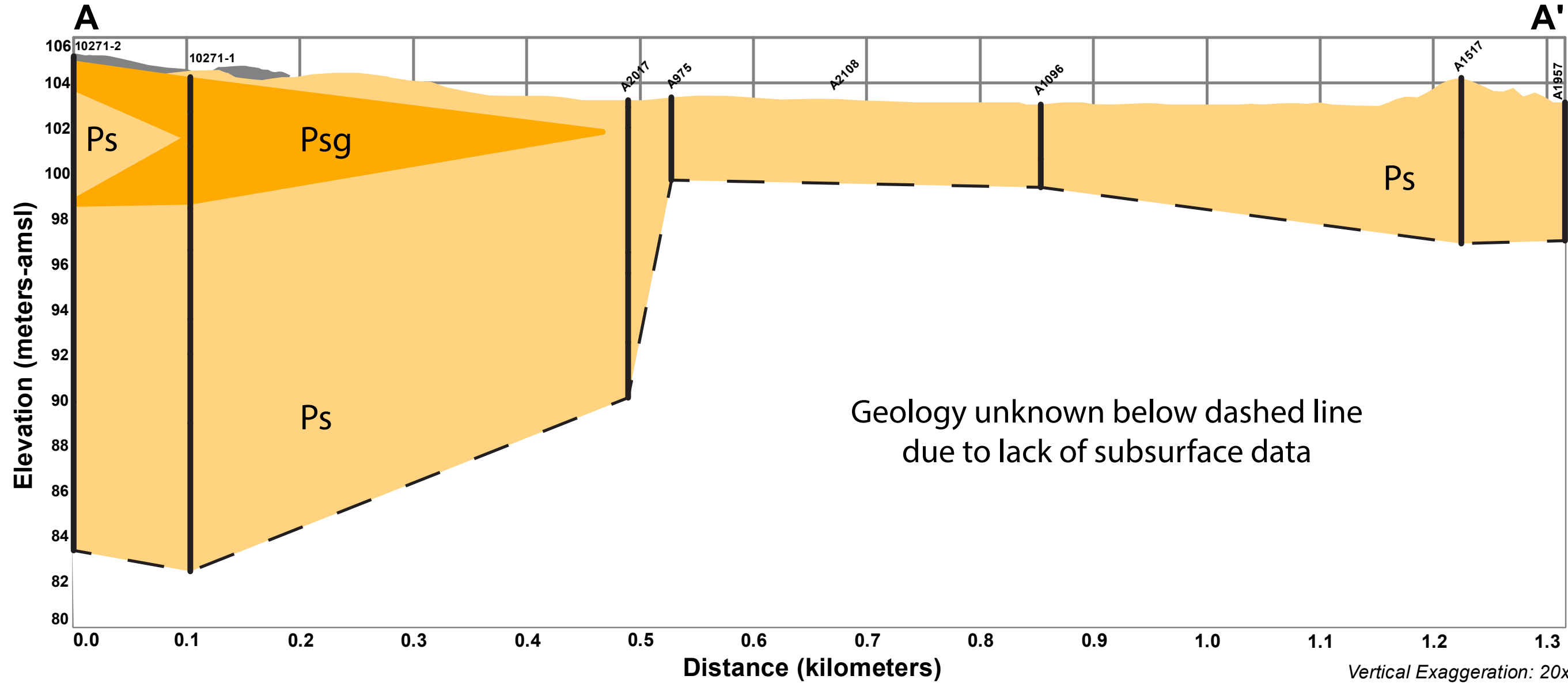
Holocene

Af	Artificial Fill (Af) Surficial sediment composed of coarse/fine and or crushed rock anthropogenically transported and used for construction purposes.
Ha	Stratified silt, sand and gravel (Ha) Sorted and stratified silt, sand, and gravel, deposited by rivers and streams. May include cobbles and boulders. Inferred as post-glacial alluvium and includes modern channel, over-bank and fan deposits
Hw	Wetland Deposit (Hw) Peat, muck, marl, silt, clay or sand deposited in association with wetland environments. Various sediments can be present at transitional boundaries from one facies to another

Pleistocene

Ps	Stratified Sand (Ps) Well sorted and stratified sand, deposited by fluvial, lacustrine or eolian processes. Inferred as deposits associated with distal glacial environments.
Plsc	Silt and Clay (Psc) Stratified, fine-grained sediment consisting of fine sand, silt and clay size particles. Inferred to be deposited in mid shore to deepwater settings of glacial lakes. May include marl, rythmites, and varves.
Psg	Stratified sand and gravel (Psg) Well-sorted and stratified sand and gravel. May include cobbles and boulders. Inferred to be delta, fan or lag deposits in glacial channels or near ice margins.
Pd	Diamicton (Pd) An admixture of unsorted sediment ranging from clay to boulders. Generally matrix supported, massive and clast-rich.

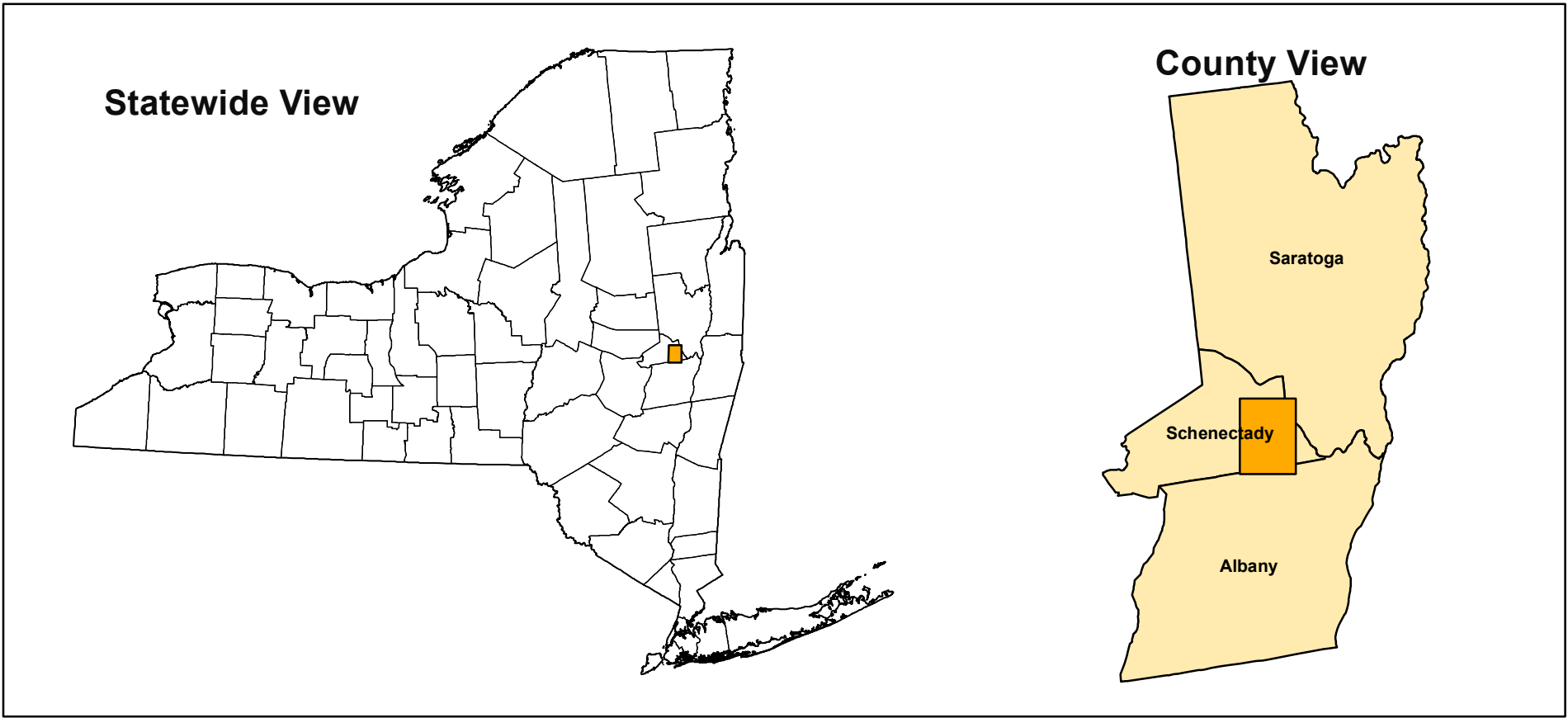
CROSS-SECTION A-A'



SYMBOLS

Highways	Water Bodies	NYSEDEC Water Well Location
Streets	Streams	NYSDOT Boring Location
Railroads	Contours	NYSTA Boring Location
County Line	Cross-Section Line	Drumlins
	Unmapped Area	

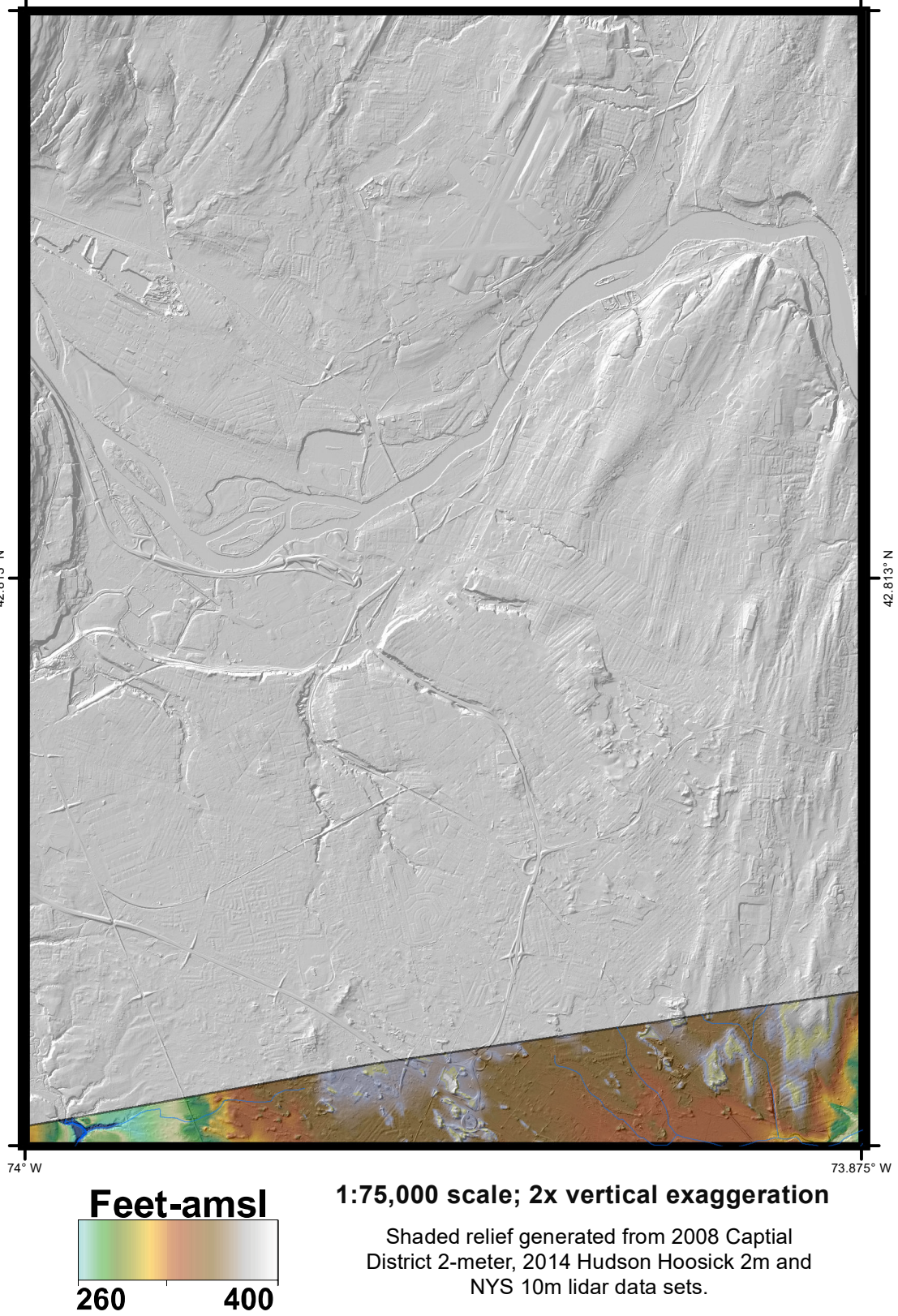
QUADRANGLE LOCATION



ADJOINING QUADRANGLES

Pattersonville	Burnt Hills	Round Lake
Rochester Junction	Schenectady	Niskayuna
Adrian	Worthingtonville	Albany

QUADRANGLE ELEVATION



SURFICIAL GEOLOGY OF THE ALBANY COUNTY PORTION OF THE SCHENECTADY 7.5-MINUTE QUADRANGLE, NEW YORK

Karl J. Backhaus, Robert J. Dineen and Andrew L. Kozlowski
2020

NOTICE
This geologic map was funded in part by the USGS National Cooperative Geologic Mapping Program STATEMAP award number **G19AC00249** in the year 2019.
The views and conclusions contained in this document are those of the authors and should not be interpreted as necessarily presenting the official policies, either expressed or implied, of the U.S. Government.
While every effort has been made to ensure the integrity of this digital map and the factual data upon which it is based, the New York State Education Department ("NYSED") makes no representation or warranty, expressed or implied, with respect to its accuracy, completeness, or usefulness for any particular purpose or scale. NYSED assumes no liability for damages resulting from the use of any information, apparatus, method, or process disclosed in this map and text, and urges independent site-specific verification of the information contained herein. Any use of trade, product, or firm names is for descriptive purposes only and does not imply endorsement by NYSED.