

# SURFICIAL GEOLOGY OF THE OSSONING 7.5-MINUTE QUADRANGLE, WESTCHESTER COUNTY, NEW YORK

prepared by  
Janet Manchester<sup>1</sup> and Karl J. Backhaus

Supported in part by the U.S Geological Survey Cooperative Agreement Number 05HQAG0009  
National Cooperative Geologic Mapping Program (STATEMAP)

## DESCRIPTION OF MAP UNITS

### Holocene

<b>Af</b>	<b>Artificial Fill (Af)</b> Surficial sediment composed of coarse/fine and or crushed rock anthropogenically transported and used for construction purposes.
<b>Ha</b>	<b>Stratified silt, sand and gravel (Ha)</b> Sorted and stratified silt, sand, and gravel, deposited by rivers and streams. May include cobbles and boulders. Inferred as post-glacial alluvium and includes modern channel, over-bank and fan deposits
<b>Hw</b>	<b>Wetland Deposit (Hw)</b> Peat, muck, marl, silt, clay or sand deposited in association with wetland environments. Various sediments can be present at transitional boundaries from one facies to another
<b>Hdc</b>	<b>Diamict Colluvium (Hdc)</b> Unsorted and unstratified deposit of gravel, sand, silt, clay, with boulders/cobbles possible. Described as a mass-wasting deposit at the base of steep hillslopes and cliffs as part of a slump or hillslope failure.
<b>Unk</b>	<b>Unknown (Unk)</b> Area within the mapping area where the surficial geologic unit is not known, intentionally left blank.

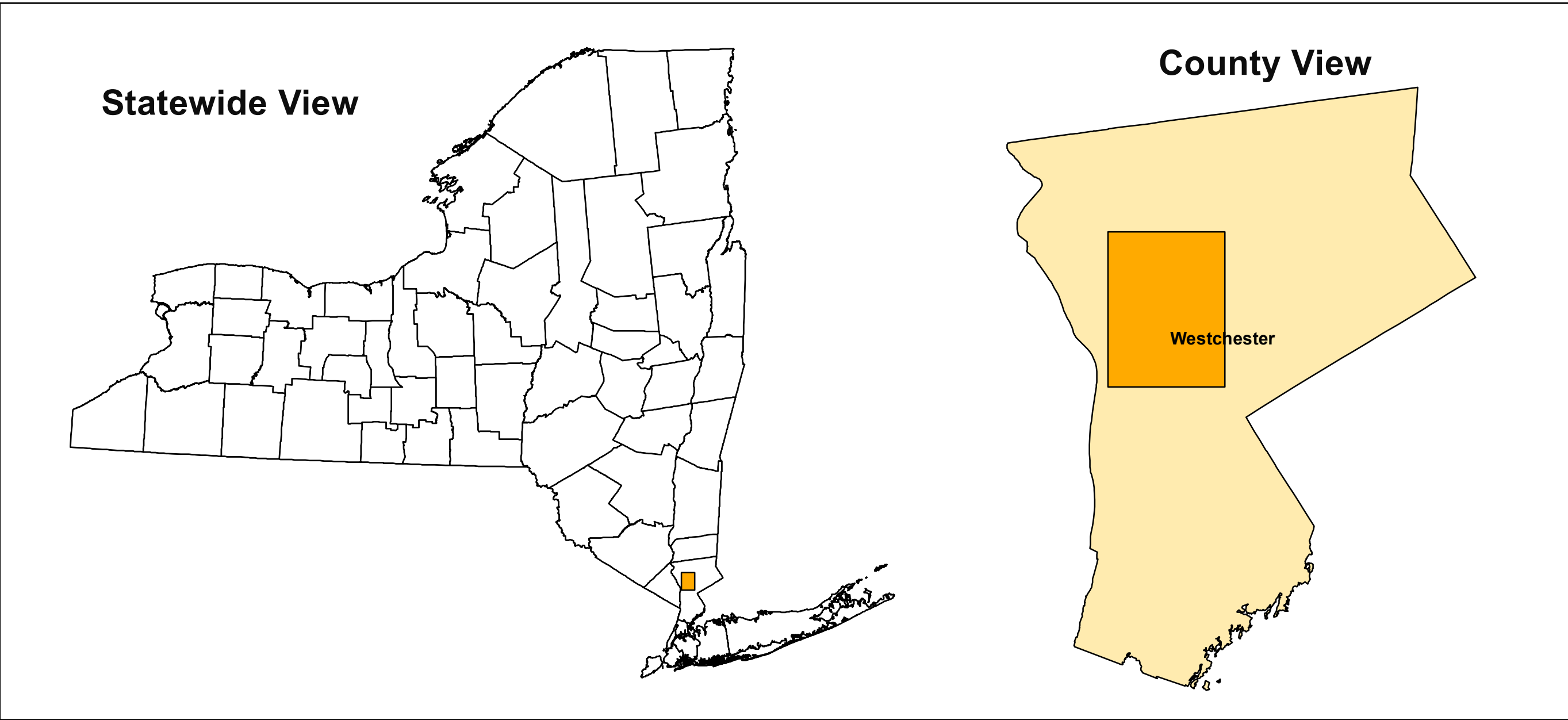
### Pleistocene

<b>Ps</b>	<b>Stratified Sand (Ps)</b> Well sorted and stratified sand, deposited by fluvial, lacustrine or eolian processes. Inferred as deposits associated with distal glacial environments.
<b>Pics</b>	<b>Cobbles to Sand (Pics)</b> Stratified ice contacted deposits, variable coarse-grained sediment consisting of boulders to sand size particles. Inferred to be deposited along an ice-margin. May include, interbedded coarse lenses of gravel and clast supported diamictons (flow tills).
<b>Psg</b>	<b>Stratified sand and gravel (Psg)</b> Well-sorted and stratified sand and gravel. May include cobbles and boulders. Inferred to be delta, fan or lag deposits in glacial channels or near former ice margins.
<b>Pd</b>	<b>Diamicton (Pd)</b> An admixture of unsorted sediment ranging from clay to boulders. Generally matrix supported, massive and clast-rich.



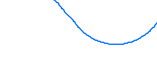


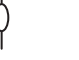
### Pre-Pleistocene

<b>Br</b>	<b>Bedrock (Br)</b> Non-glacially derived, hard rock, pre-pleistocene in age. May be covered up to a meter in diamicton, sand and gravel, or sand and clay in areas marked as Br.
-----------	--

## QUADRANGLE LOCATION



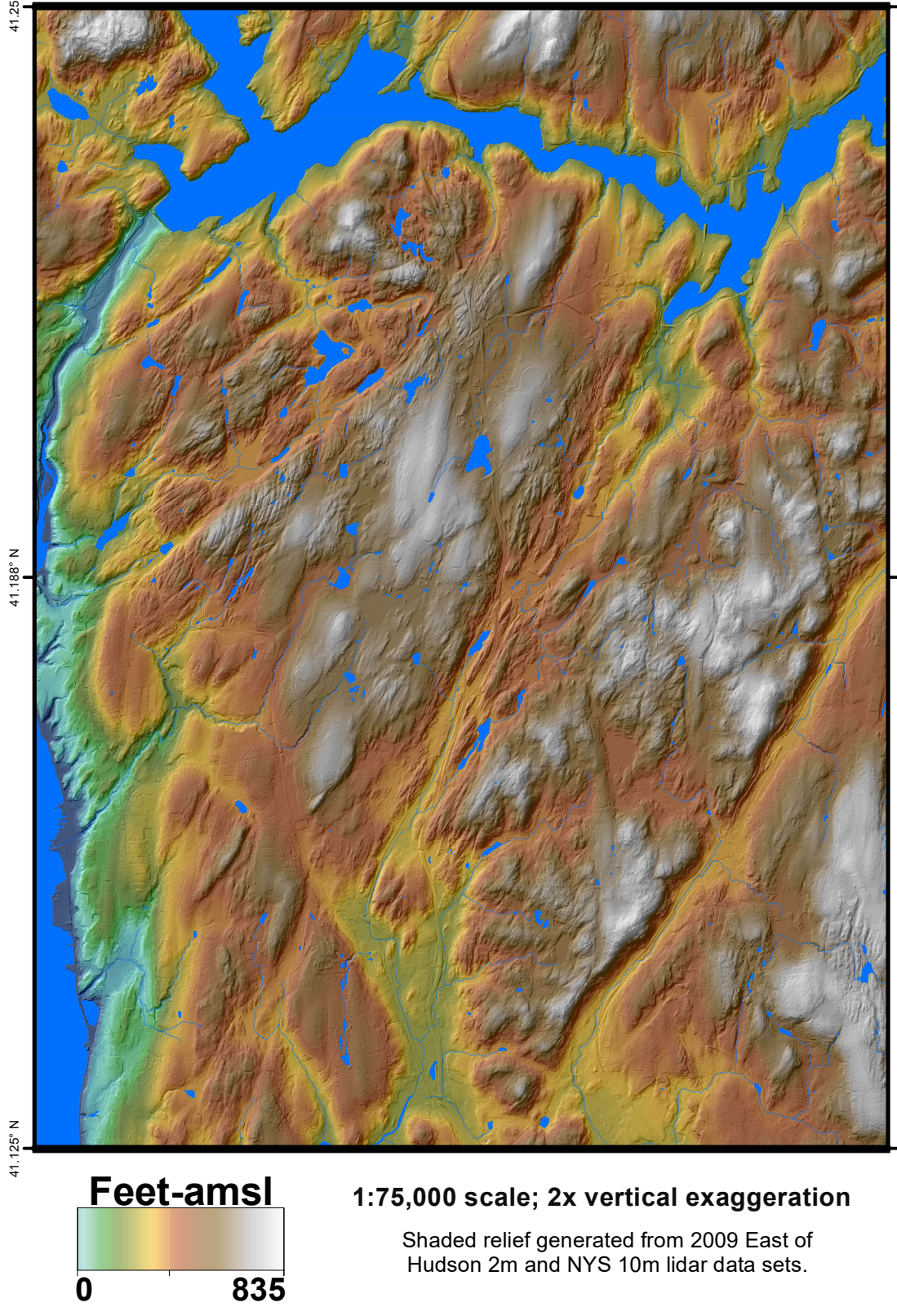
## SYMBOLS

— Streets	 Water Bodies	 NYSDEC Water Well Location
— Highways	 Streams	 NYSDOT Boring Location
— Railroads	 Contours	 Drumlins

## ADJOINING QUADRANGLES

Peekskill	Mohoggan Lake	Croton Falls
Haverstraw	Ossoning	Mount Kisco
Nyack	White Plains	Glenville

## QUADRANGLE ELEVATION



# SURFICIAL GEOLOGY OF THE OSSONING 7.5-MINUTE QUADRANGLE, WESTCHESTER COUNTY, NEW YORK

G. Gordon Connally  
2010

NOTICE  
This geologic map was funded in part by the USGS National Cooperative Geologic Mapping Program STATEMAP award number 05HQAG0009 in the year 2006.  
The views and conclusions contained in this document are those of the authors and should not be interpreted as necessarily presenting the official policies, either expressed or implied, of the U.S. Government.  
While every effort has been made to ensure the integrity of this digital map and the factual data upon which it is based, the New York State Education Department ("NYSED") makes no representation or warranty, expressed or implied, with respect to its accuracy, completeness, or usefulness for any particular purpose or scale. NYSED assumes no liability for damages resulting from the use of any information, apparatus, method, or process disclosed in this map and text, and urges independent site-specific verification of the information contained herein. Any use of trade, product, or firm names is for descriptive purposes only and does not imply endorsement by NYSED.