

# SURFICIAL GEOLOGY OF THE CLINTONDALE 7.5-MINUTE QUADRANGLE, ULSTER COUNTY, NEW YORK

*prepared by*

David Desimone, Janet Manchesteri and Karl J. Backhaus

Supported in part by the U.S Geological Survey Cooperative Agreement Number 07HQAG0073  
National Cooperative Geologic Mapping Program (STATEMAP)

## DESCRIPTION OF MAP UNITS

### Holocene

- Af**
- Artificial Fill (Af)**  
Surficial sediment composed of coarse/fine and or crushed rock anthropogenically transported and used for construction purposes.
- Ha**
- Stratified silt, sand and gravel (Ha)**  
Sorted and stratified silt, sand, and gravel, deposited by rivers and streams. May include cobbles and boulders. Inferred as post-glacial alluvium and includes modern channel, over-bank and fan deposits
- Hw**
- Wetland Deposit (Hw)**  
Peat, muck, marl, silt, clay or sand deposited in association with wetland environments. Various sediments can be present at transitional boundaries from one facies to another

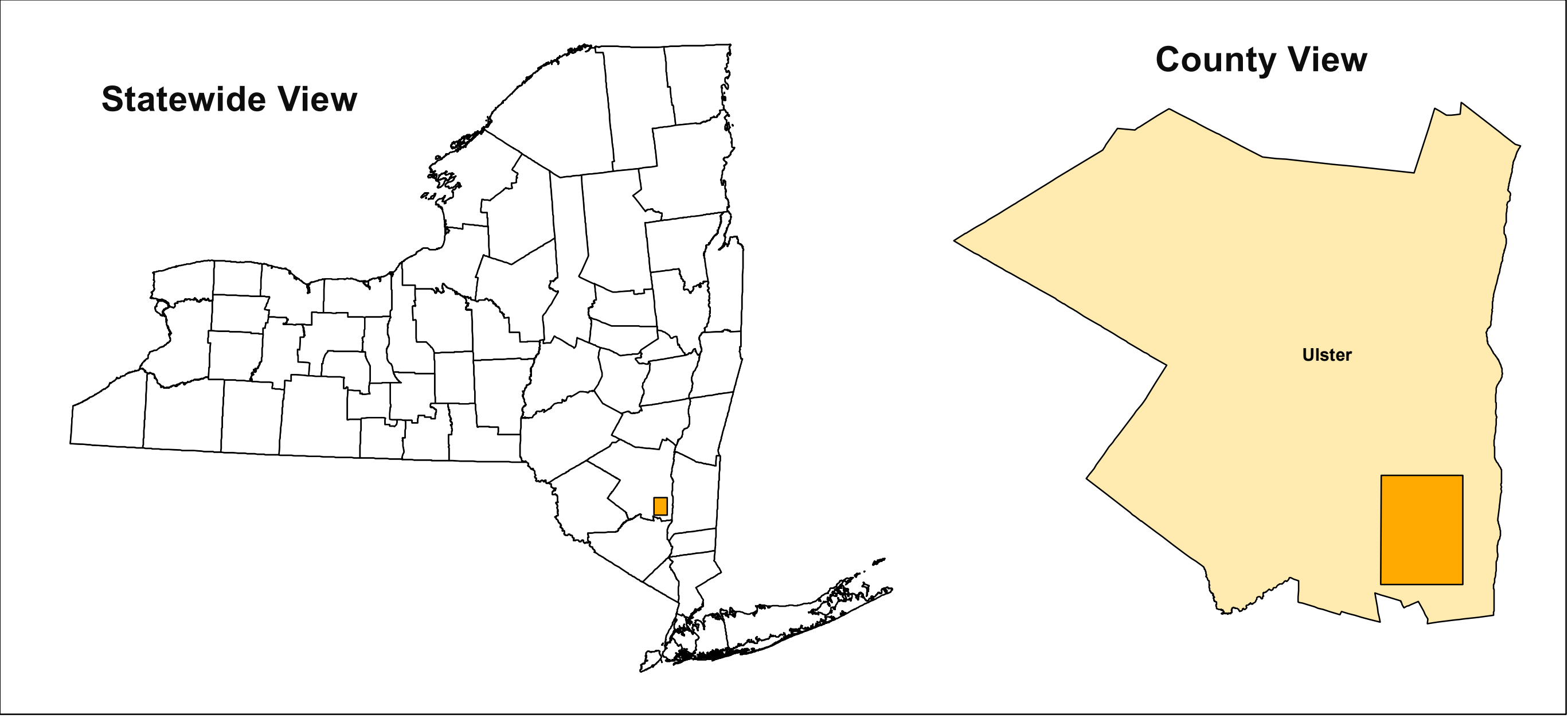
### Pleistocene

- Ps**
- Stratified Sand (Ps)**  
Well sorted and stratified sand, deposited by fluvial, lacustrine or eolian processes. Inferred as deposits associated with distal glacial environments.
- Plsc**
- Silt and Clay (Psc)**  
Stratified, fine-grained sediment consisting of fine sand, silt and clay size particles. Inferred to be deposited in mid shore to deepwater settings of glacial lakes. May include marl, rythmites, and varves.
- Pics**
- Cobbles to Sand (Pics)**  
Stratified ice contacted deposits, variable coarse-grained sediment consisting of boulders to sand size particles. Inferred to be deposited along an ice-margin. May include, interbedded coarse lenses of gravel and clast supported diamictons (flow tills).
- Psg**
- Stratified sand and gravel (Psg)**  
Well-sorted and stratified sand and gravel. May include cobbles and boulders. Inferred to be delta, fan or lag deposits in glacial channels or near former ice margins.
- Pd**
- Diamicton (Pd)**  
An admixture of unsorted sediment ranging from clay to boulders. Generally matrix supported, massive and clast-rich.

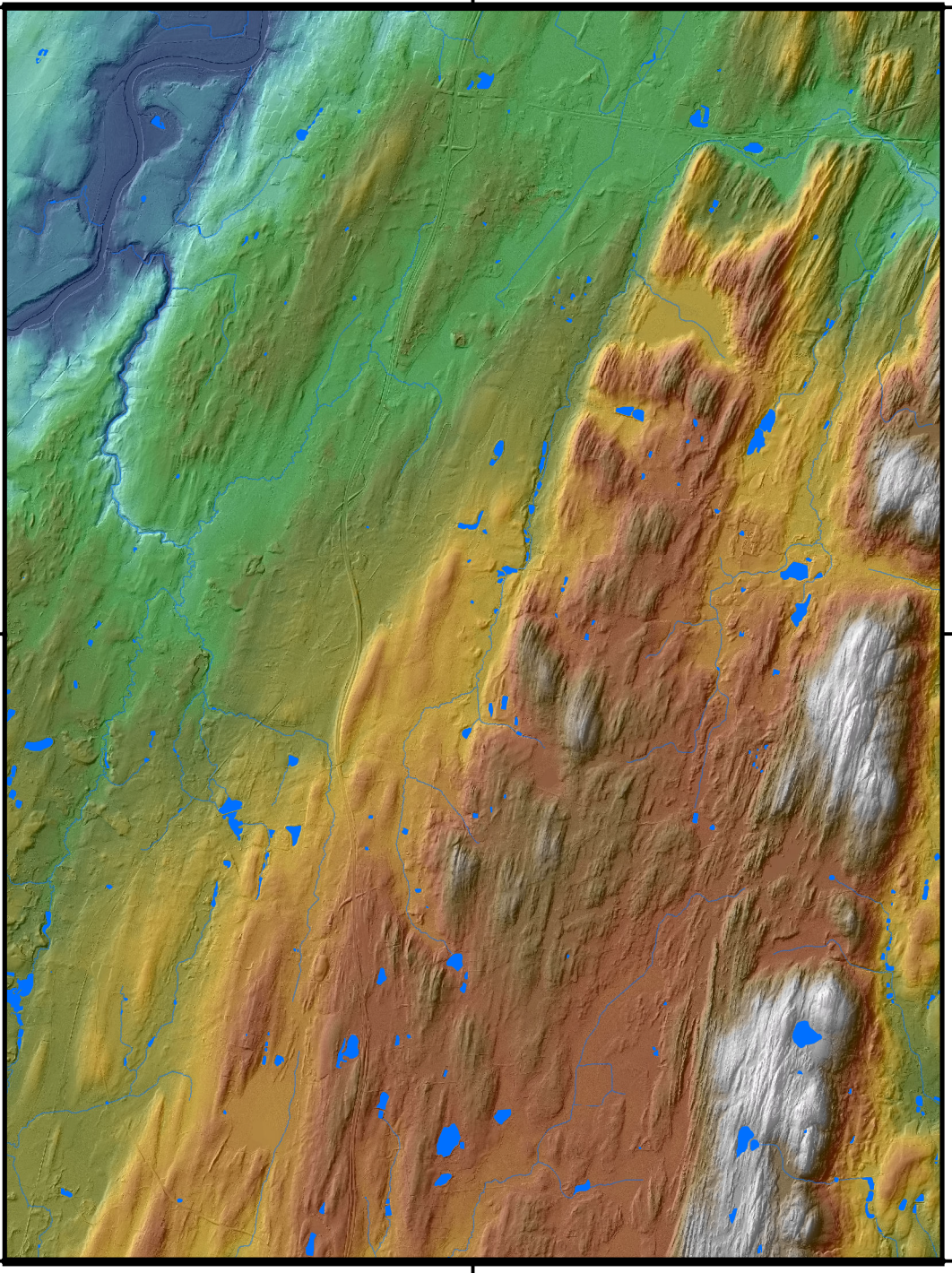
### Pre-Pleistocene

- Br**
- Bedrock (Br)**  
Non-glacially derived, hard rock, pre-pleistocene in age. May be covered up to a meter in diamicton, sand and gravel, or sand and clay in areas marked as Br.

## QUADRANGLE LOCATION



## QUADRANGLE ELEVATION



## SYMBOLS

- |                |                            |                       |
|----------------|----------------------------|-----------------------|
| Streets        | Streams                    | NYSTA Boring Location |
| Highways       | Contours                   | Drumlins              |
| Airport Runway | NYSDEC Water Well Location | Eskers                |
| Water Bodies   | NYS DOT Boring Location    | Ice Margins           |

## ADJOINING QUADRANGLES

Monk Lake	Rosendale	Hyde Park
Gardiner	Clintondale	Poughkeepsie
Walden	Newburgh	Wappingers Falls

# SURFICIAL GEOLOGY OF THE CLINTONDALE 7.5-MINUTE QUADRANGLE, ULSTER COUNTY, NEW YORK

G. Gordon Connally  
2008

**NOTICE**  
This geologic map was funded in part by the USGS National Cooperative Geologic Mapping Program STATEMAP award number 07HQAG0073 in the year 2008.  
The views and conclusions contained in this document are those of the authors and should not be interpreted as necessarily presenting the official policies, either expressed or implied, of the U.S. Government.  
While every effort has been made to ensure the integrity of this digital map and the factual data upon which it is based, the New York State Education Department ("NYSED") makes no representation or warranty, expressed or implied, with respect to its accuracy, completeness, or usefulness for any particular purpose or scale. NYSED assumes no liability for damages resulting from the use of any information, apparatus, method, or process disclosed in this map and text, and urges independent site-specific verification of the information contained herein. Any use of trade, product, or firm names is for descriptive purposes only and does not imply endorsement by NYSED.