

DRIFT THICKNESS OF
ONTARIO COUNTY, NEW YORK

Richard A. Frieman

2024

Introduction

Beginning in 2019, under the guidance and funding provided by the United States Geological Survey - Great Lakes Geological Mapping Coalition (award G20AC00401), the New York State Museum - Geological Survey began a statewide effort to conduct geologic mapping of bedrock elevations throughout New York. Ontario County, in Central New York, is bound from west to east by Monroe, Livingston, Steuben, Seneca, Wayne and Yates Counties. It is also bounded to the east by Seneca Lake, the west by Hemlock and to the south by Canandaigua Lake. Surficial and subsurface bedrock point data and maps were compiled from publicly available sources, vetted, and organized into a comprehensive geospatial database. A technical workflow was developed to categorize the overall geology and differentiate between the underlying bedrock and overlying unconsolidated sediments. The resulting bedrock elevation map provides a detailed representation of bedrock topography across Ontario County. This map is useful for various applications, including geological studies, engineering and construction, natural resource management (such as water or mineral resources), and environmental studies.

Methodology

A total of 2,237 bedrock control points were used to delineate bedrock topography in Ontario County. These points consisted of 2,120 water wells, 90 bedrock outcrops and 24 engineering boreholes. These data were compiled from a variety of public sources and imported into ESRI's ArcMap 10.8 software platform. Ground surface elevations for all control points were extracted from the highest available resolution LIDAR DEM data available and subsequently resampled to a cell size/resolution of 1m x 1m. Bedrock elevations were calculated at each location by subtracting the depth-to-bedrock from the ground surface elevation. Bedrock elevation contours generated by ArcMap at a 50-foot interval were manually refined through a multi-step quality control process to resolve any interpolation errors. The finalized contours were converted into a 1-meter raster, using the "Topo to Raster" tool, the product of which is the county-wide bedrock topography map. Lastly, the "Raster Calculator" tool is used to subtract the surface elevation from the bedrock elevation to determine the thickness of the drift in the county.

Summary

The New York State Museum – Geological Survey has developed a detailed Drift Thickness Map for Ontario County. This map represents a compilation of various surficial and subsurface bedrock data sources, analytical methods, and quality control procedures. The resulting bedrock elevations reveal a range of distinct geological features including a variety of Paleozoic bedrock erosional profiles, and evidence of past glaciation. These characteristics are likely the result of a variety of functions including bedrock stratigraphy, structural deformation, and erosional processes such as past glaciation and fluvial geomorphology. This map is significant for applications in geological research, engineering, natural resource management, and environmental studies. Continued research and work on subsurface geology will provide additional data and insight and enhance the geologic framework of bedrock geology throughout New York State.

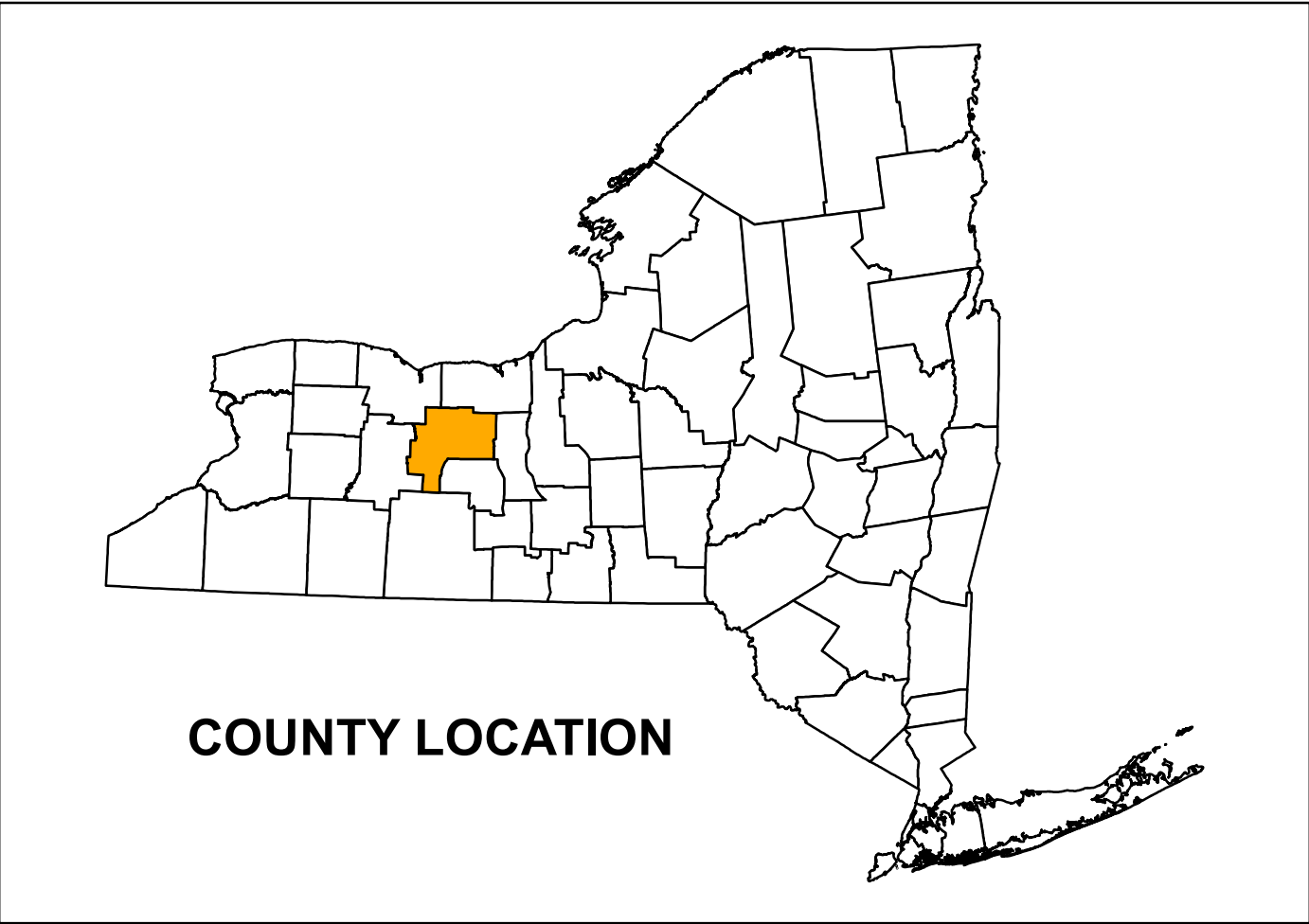
Explanation

- Data Point
- 50ft Drift Thickness Contour
- 100ft Drift Thickness Contour
- Highway
- Ontario County Line
- Adjacent County
- Water Body

Drift Thickness

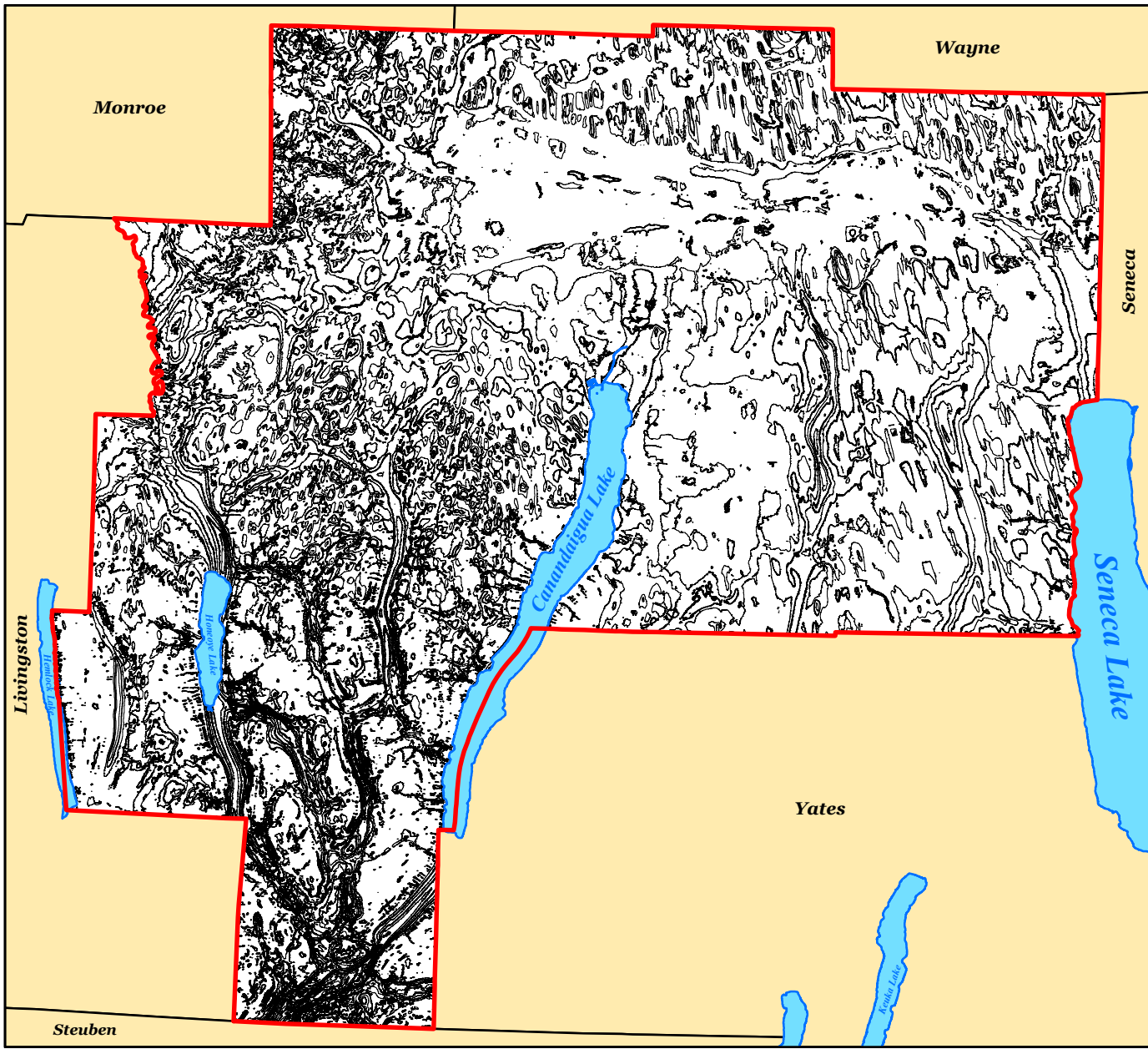
Feet Thick

- 0 - 10
- 10 - 20
- 20 - 30
- 30 - 40
- 40 - 50
- 50 - 60
- 60 - 70
- 70 - 80
- 80 - 90
- 90 - 100
- 100 - 200
- 200 - 300
- 300 - 400
- 400 - 500
- 500 - 600
- 600 - 700
- 700 - 800
- 800 - 900

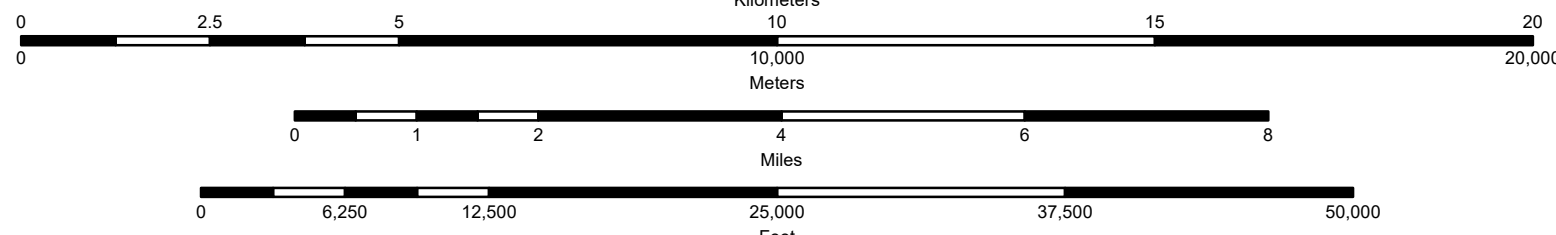


COUNTY LOCATION

DRIFT THICKNESS CONTOUR MAP



SCALE 1:100,000



NOTICE
This geologic map was funded in part by the USGS National Cooperative Geologic Mapping Program STATEMAP award number 03M0AC00401 in the year 2021.
The names and conclusions contained in this document are those of the authors and should not be interpreted as necessarily representing the official policies, either expressed or implied, of the U.S. Government.
While every effort has been made to ensure the integrity of the digital map and the digital data sets which it is based, the New York State Geological Survey (NYSGS) makes no representation or warranty, expressed or implied, with respect to its accuracy, completeness, or suitability for any particular purpose or use. (NYSGS assumes no liability for damages resulting from the use of any information, especially, technical or product information, in this map and data, and urges independent site-specific verification of the information contained herein. Any use of trade, product, or firm names is for descriptive purposes only and does not imply endorsement by NYSGS.)

