

DRIFT THICKNESS OF CATTARAUGUS COUNTY, NEW YORK

Sean P. Grasing

2024

Introduction

Beginning in 2019, under the guidance and funding provided by the United States Geological Survey - Great Lakes Geological Mapping Coalition (award G20AC00401), the New York State Museum - Geological Survey began a statewide effort to conduct geologic mapping of bedrock elevations throughout New York. Cattaraugus County, of Western New York, is in the physiographic province of the Allegheny Plateau. The county is nestled between Chautauqua, and Allegany counties. Cattaraugus County is also located along two large bodies of water, Lake Ontario, and Oneida Lake. Surficial and subsurface bedrock point data and maps were compiled from publicly available sources, vetted, and organized into a comprehensive geospatial database. A technical workflow was developed to categorize the overall geology and differentiate between the underlying bedrock and overlying unconsolidated sediments. The resulting bedrock elevation map provides a detailed representation of bedrock topography across Cattaraugus County. This map is useful for various applications, including geological studies, engineering and construction, natural resource management (such as water or mineral resources), and environmental studies.

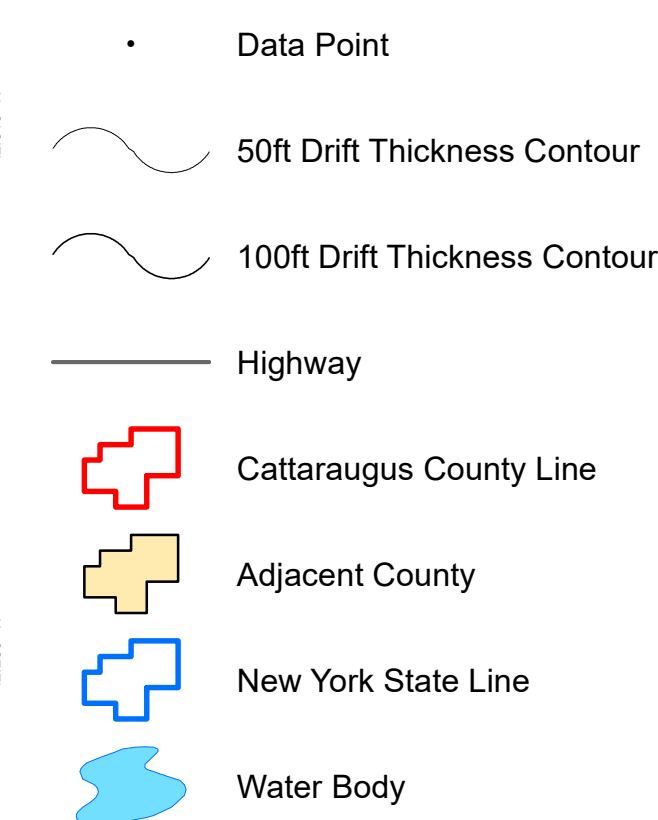
Methodology

A total of 9,476 bedrock control points were used to delineate bedrock topography in Cattaraugus County. These points consisted of 6,197 bedrock outcrops, 2,940 water wells, 286 engineering boreholes, 45 waterfall locations and eight oil and gas wells. These data were compiled from a variety of public sources and imported into ESRI's ArcMap 10.8 software platform. Ground surface elevations for all control points were extracted from a compilation of three separate digital elevation models (DEM) which were resampled to match a 1-meter LIDAR DEM cell size. Bedrock elevations were calculated at each location by subtracting the depth-to-bedrock from the ground surface elevation. 50-foot bedrock elevation contours were auto-generated and manually refined through a multi-step quality control process to resolve any interpolation errors. The finalized contours were converted into a 1-meter raster, using the "Topo to Raster" tool, that represents county-wide bedrock topography. Lastly, the "Raster Calculator" tool is used to subtract the surface elevation from the bedrock elevation to determine the thickness of the drift in the county.

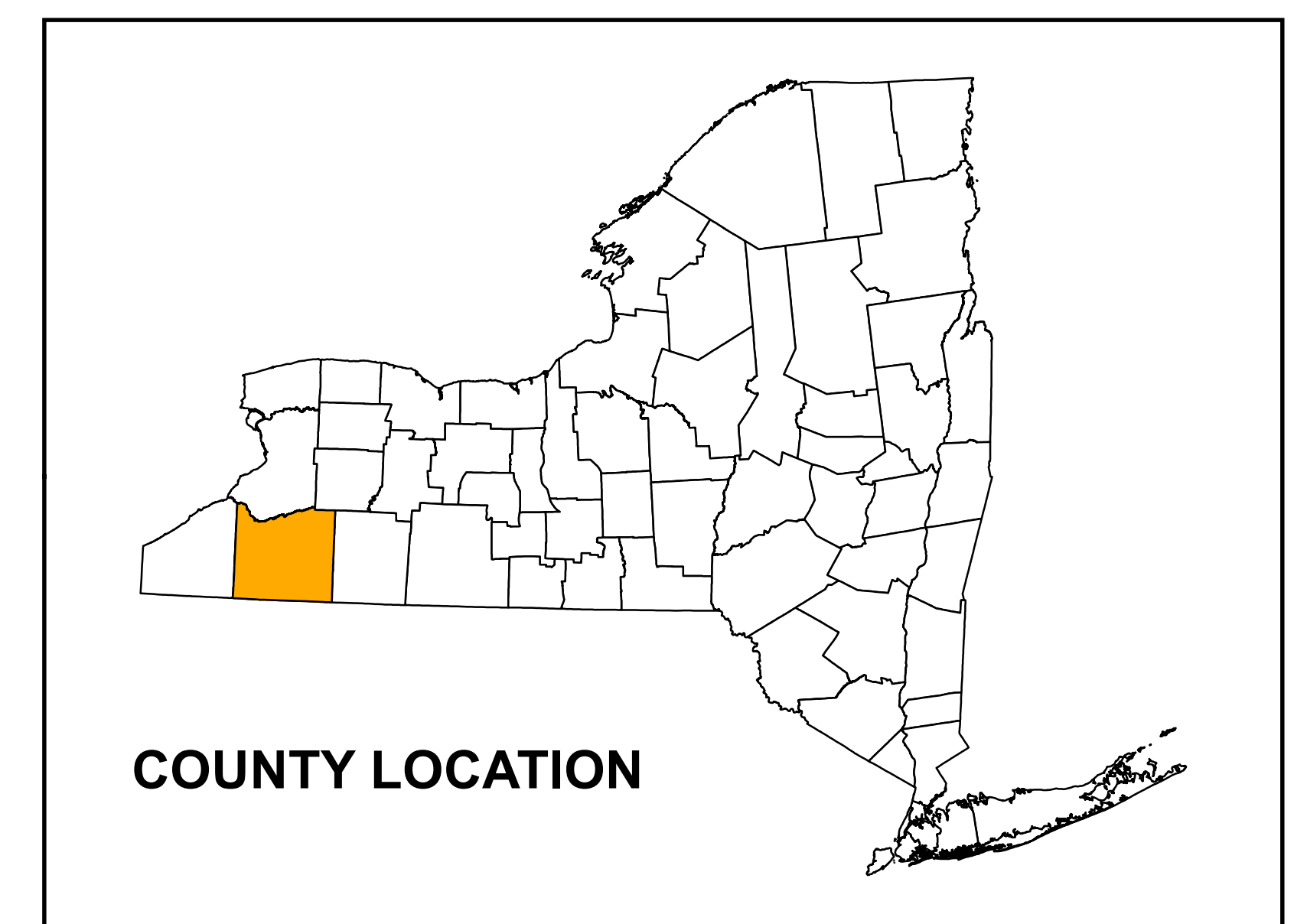
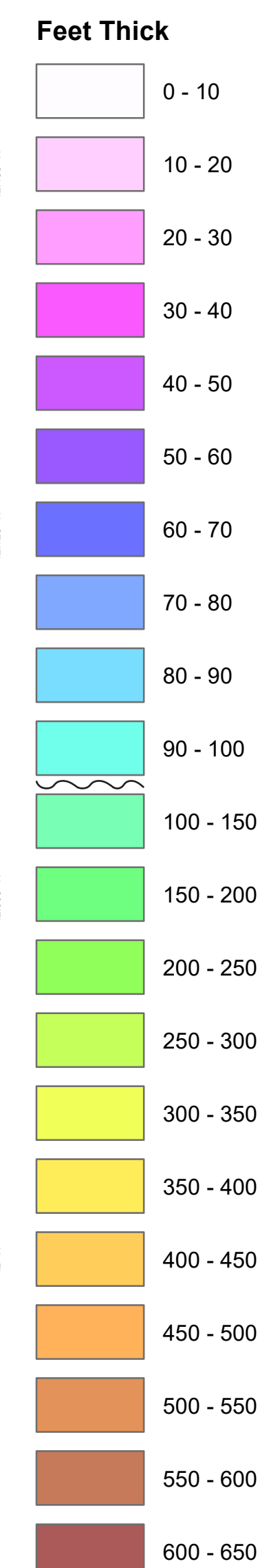
Summary

The New York State Museum Geological Survey has developed a detailed Bedrock Topography Map for Cattaraugus County. This map represents a compilation of various surficial and subsurface bedrock data sources, analytical methods, and quality control procedures. The resulting bedrock elevations reveal a range of distinct geological features including a variety of Paleozoic bedrock erosional profiles, and evidence of past glaciation. These characteristics are likely the result of a variety of functions including bedrock stratigraphy, structural deformation, and erosional processes such as past glaciation and fluvial geomorphology. This map is significant for applications in geological research, engineering, natural resource management, and environmental studies. Continued research and work on subsurface geology will provide additional data and insight and enhance the geologic framework of bedrock geology throughout New York State.

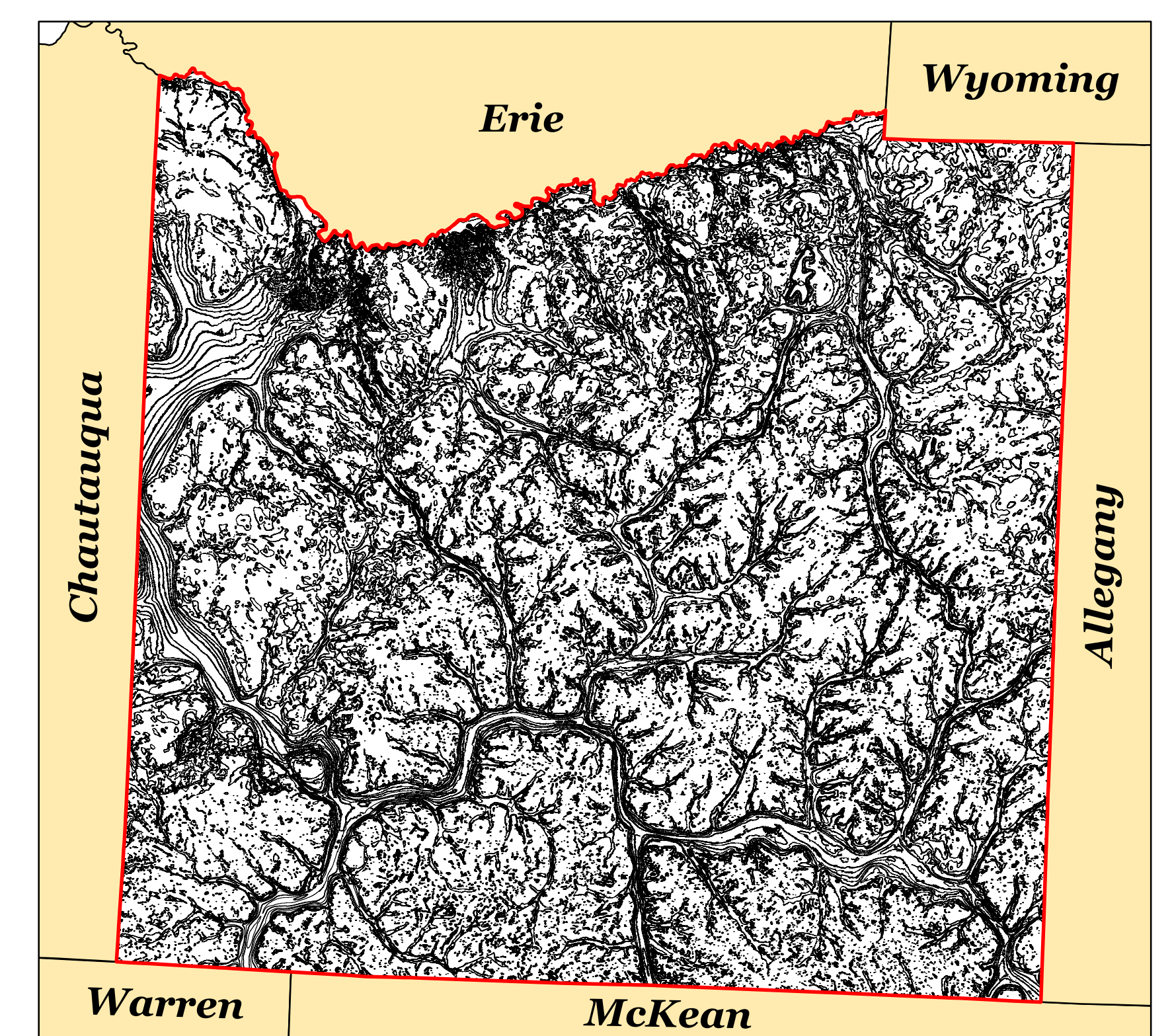
Explanation



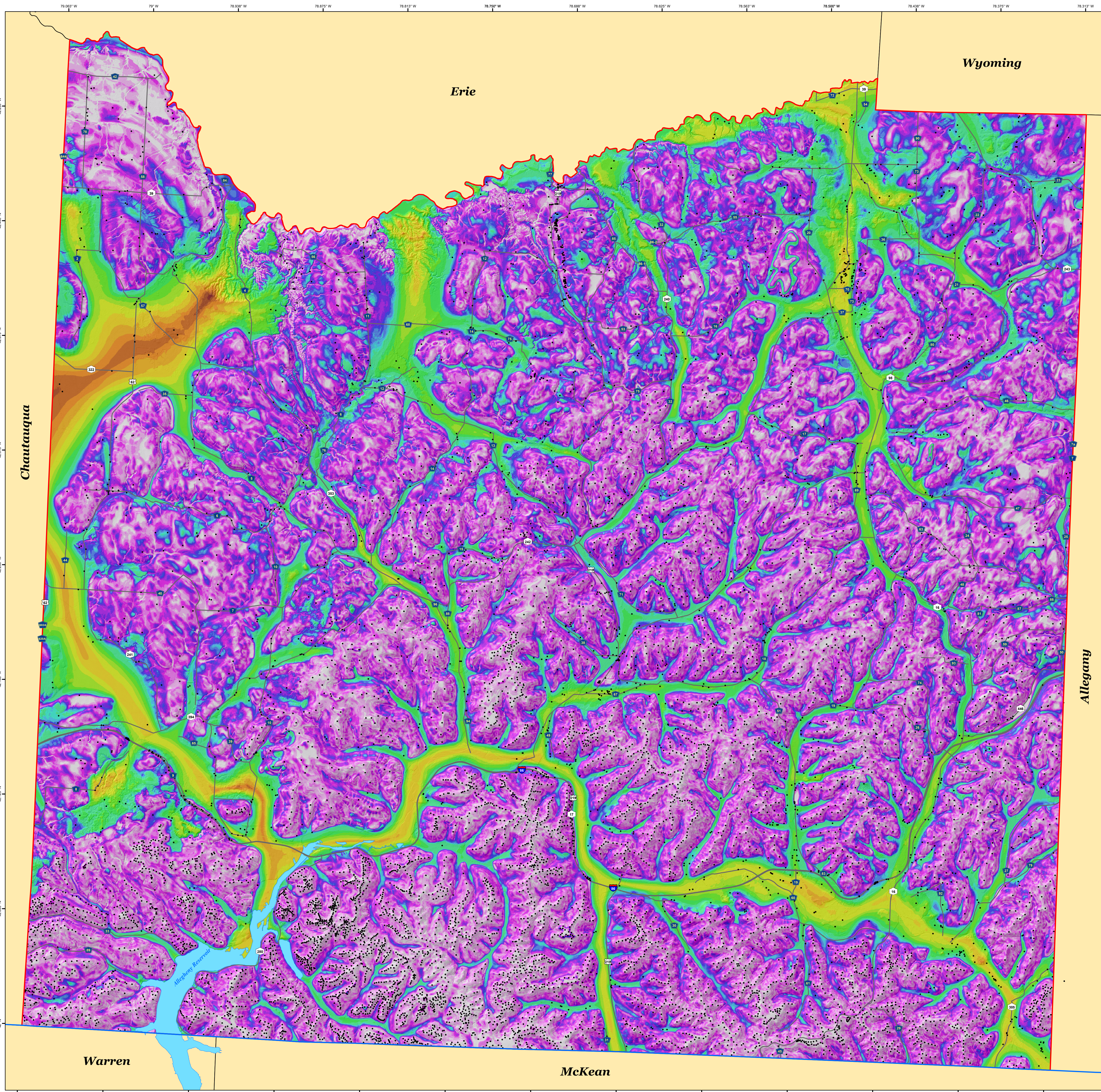
Drift Thickness



DRIFT THICKNESS CONTOUR MAP



New York State Museum Map & Chart No. 204
ISSN:0097-3793 ; ISBN:978-1-55557-450-5



Digital Data and Cartography by S. Grasing and K. Backhaus, 2022-24.

Universal Transverse Mercator, Zone 18 N North American Datum of 1983

Geographic data obtained from the NYSGIS Clearinghouse (<https://gis.ny.gov/>)

Shaded relief from 2017 Southwest and SouthwestB Fall 1m lidar data set (<http://qis.ny.gov/elevation/index.cfm>)

NOTICE

This project was funded in part by the USGS National Cooperative Geospatial Mapping Program STATEMAP award number 026AC00818 in the year 2021.

The views and conclusions contained in this document are those of the authors and should not be interpreted as necessarily presenting the official policies, expressed or implied, of the U.S. Government.

We warrant that we have made every effort to ensure the integrity of this digital map and the factual data upon which it is based. The New York State Education Department has reviewed and approved, accepted or modified, with respect to its accuracy, completeness, or suitability for any particular purpose or use, the information presented in this report. However, NYSED assumes no liability for damages resulting from the use of any information, apparatus, method, or process disclosed in this map and fact, and does not accept the specific verification of the information contained herein. Any use of trade product, or firm names is for descriptive purposes only and does not imply endorsement by NYSED.

