

# BEDROCK TOPOGRAPHY OF TOMPKINS COUNTY, NEW YORK

Karl J. Backhaus

2024

## Introduction

Beginning in 2019, under the guidance and funding provided by the United States Geological Survey - Great Lakes Geological Mapping Coalition (award G20AC00401), the New York State Museum - Geological Survey began a statewide effort to conduct geologic mapping of bedrock elevations throughout New York. Tompkins County, of Central New York, lies within the Allegheny Plateau physiographic province. The county is bounded by Schuyler, Chemung, Tioga, Cortland, Cayuga and Seneca Counties. Tompkins County is also dissected Cayuga Lake in the central portion of the county. Surficial and subsurface bedrock point data and maps were compiled from publicly available sources, vetted, and organized into a comprehensive geospatial database. A technical workflow was developed to categorize the overall geology and differentiate between the underlying bedrock and overlying unconsolidated sediments. The resulting bedrock elevation map provides a detailed representation of bedrock topography across Tompkins County. This map is useful for various applications, including geological studies, engineering and construction, natural resource management (such as water or mineral resources), and environmental studies.

## Methodology

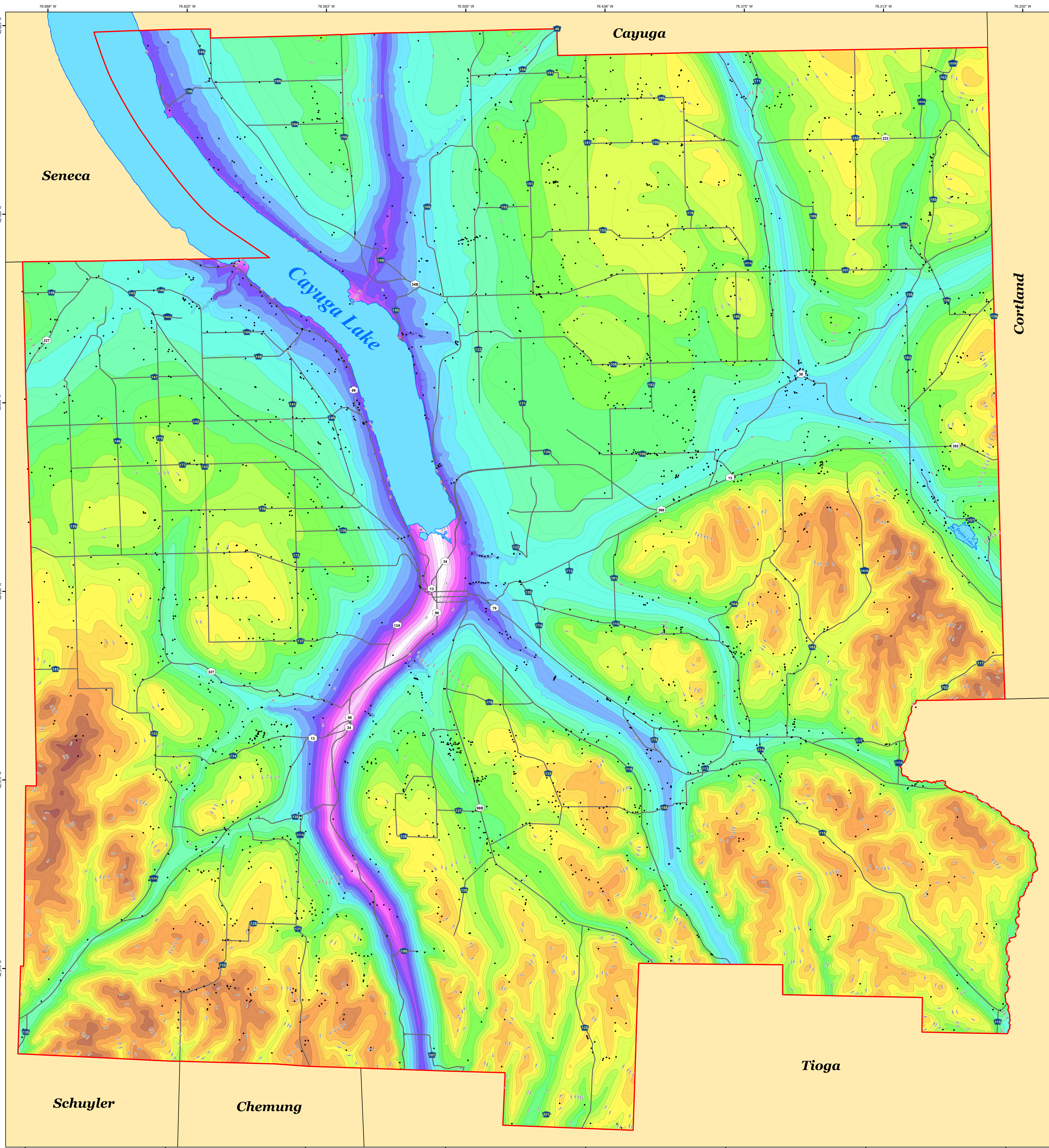
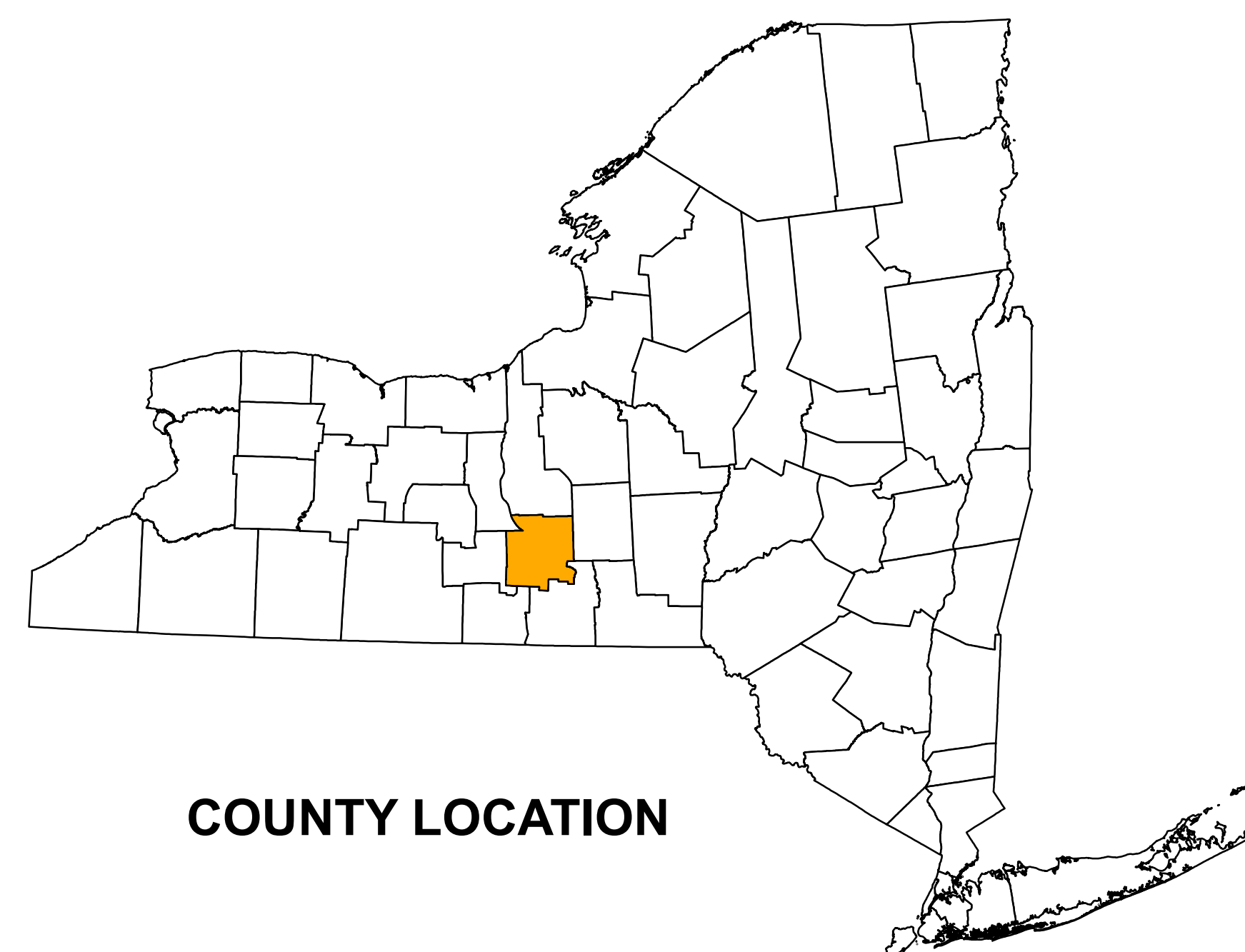
A total of 2,791 bedrock control points were used to delineate bedrock topography in Tompkins County. These points consisted of 2,406 water wells, 231 bedrock outcrops, 118 waterfall locations, 32 engineering boreholes, and four oil and gas wells. These data were compiled from a variety of public sources and imported into ESRI's ArcMap 10.8 software platform. Ground surface elevations for all control points were extracted from a compilation of three separate digital elevation models (DEM) which were resampled to match a 1-meter LIDAR DEM cell size. Bedrock elevations were calculated at each

### Explanation

location by subtracting the depth-to-bedrock from the ground surface elevation. 50-foot bedrock elevation contours were auto-generated and manually refined through a multi-step quality control process to resolve any interpolation errors. The finalized contours were converted into a 1-meter raster, using the “Topo to Raster” tool, that represents county-wide bedrock topography.

## Summary

The New York State Museum – Geological Survey has developed a detailed Bedrock Topography Map for Tompkins County. This map represents a compilation of various surficial and subsurface bedrock data sources, analytical methods, and quality control procedures. The resulting bedrock elevations reveal a range of distinct geological features including a variety of Paleozoic bedrock erosional profiles, and evidence of past glaciation. These characteristics are likely the result of a variety of functions including bedrock stratigraphy, structural deformation, and erosional processes such as past glaciation and fluvial geomorphology. This map is significant for applications in geological research, engineering, natural resource management, and environmental studies. Continued research and work on subsurface geology will provide additional data and insight and enhance the geologic framework of bedrock geology throughout New York State.



Digital Data and Cartography by K. Backhaus, 2022-24

Universal Transverse Mercator, Zone 18 N North American Datum of 1983

Geographic data obtained from the NYSGIS Clearinghouse (<https://gis.ny.gov/>)

**NOTICE**

This geologic map was funded in part by the USGS National Cooperative Geologic Mapping Program (STATEMAP award number: **606AC00018**) in the year 2001.

The views and conclusions contained in this document are those of the authors and should not be interpreted as necessarily representing the official policies, either stated or implied, of the U.S. Government.

While every effort has been made to ensure the integrity of this digital map and the best data upon which it is based, the New York State Education Department (NYSED) makes no representation or warranty, expressed or implied, with respect to its accuracy, completeness, or suitability for any particular purpose or scale. The user assumes all liability for damages resulting from the use of this information, appearing, either, or in whole or in part, in this map and/or, in any other form.

Independent site-specific verification of the information contained herein. Any use of trade, product, or firm names is for descriptive purposes only and does not imply endorsement by NYSED.

**New York State Museum Map & Chart No. 207**  
ISSN:0097-3793 ; ISBN:978-1-55557-461-1