

DRIFT THICKNESS OF STEUBEN COUNTY, NEW YORK

Hailey Mundell and Richard A. Frieman

2024

Introduction

Beginning in 2019, under the guidance and funding provided by the United States Geological Survey - Great Lakes Geological Mapping Coalition (award G20AC00401), the New York State Museum - Geological Survey began a statewide effort to conduct geologic mapping of bedrock elevations throughout New York. Steuben County, of southwestern New York, is in the Alleghany Plateau physiographic province. The county is nestled between Allegany, Livingston, Ontario, Yates, Schuyler, and Chemung Counties with Pennsylvania to the south. Steuben County is also located along one large body of water, Keuka Lake. Surficial and subsurface bedrock point data and maps were compiled from publicly available sources, vetted, and organized into a comprehensive geospatial database. A technical workflow was developed to categorize the overall geology and differentiate between the underlying bedrock and overlying unconsolidated sediments. The resulting bedrock elevation map provides a detailed representation of bedrock topography across Steuben County. This map is useful for various applications, including geological studies, engineering and construction, natural resource management (such as water or mineral resources), and environmental studies.

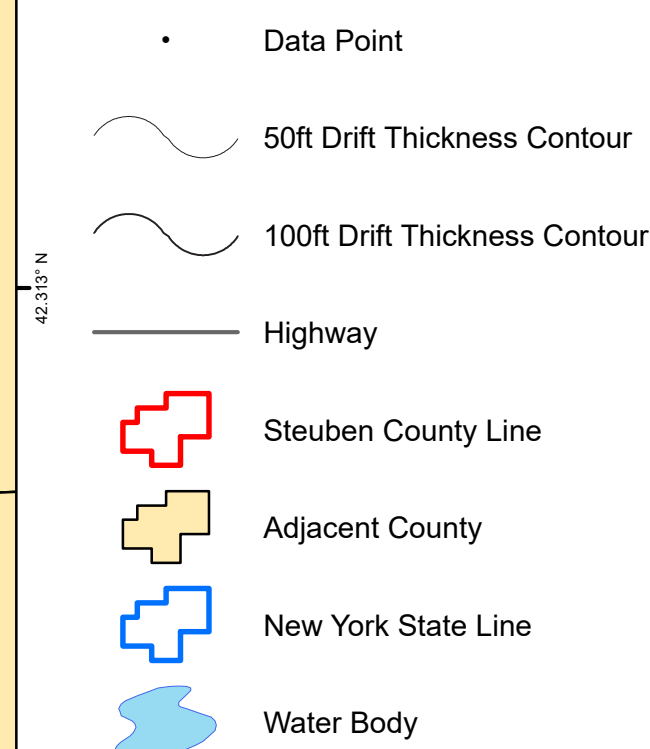
Methodology

A total of 3,947 bedrock control points were used to delineate bedrock topography in Steuben County. These points consisted of 2,556 water wells, 157 thruway engineering boreholes, 1,171 bedrock outcrops, 49 waterfall locations and 14 oil and gas wells. These data were compiled from a variety of public sources and imported into ESRI's ArcMap 10.8 software platform. Ground surface elevations for all control points were extracted from a compilation of three separate digital elevation models (DEMs) which were resampled to match a 1-meter LIDAR DEM cell size. Bedrock elevations were calculated at each location by subtracting the depth-to-bedrock from the ground surface elevation. Fifty-foot bedrock elevation contours were auto-generated and manually refined through a multi-step quality control process to resolve any interpolation errors. The finalized contours were converted into a 1-meter raster, using the "Topo to Raster" tool, that represents county-wide bedrock topography. Lastly, the "Raster Calculator" tool was used to subtract the surface elevation from the bedrock elevation to determine the thickness of the drift in the county.

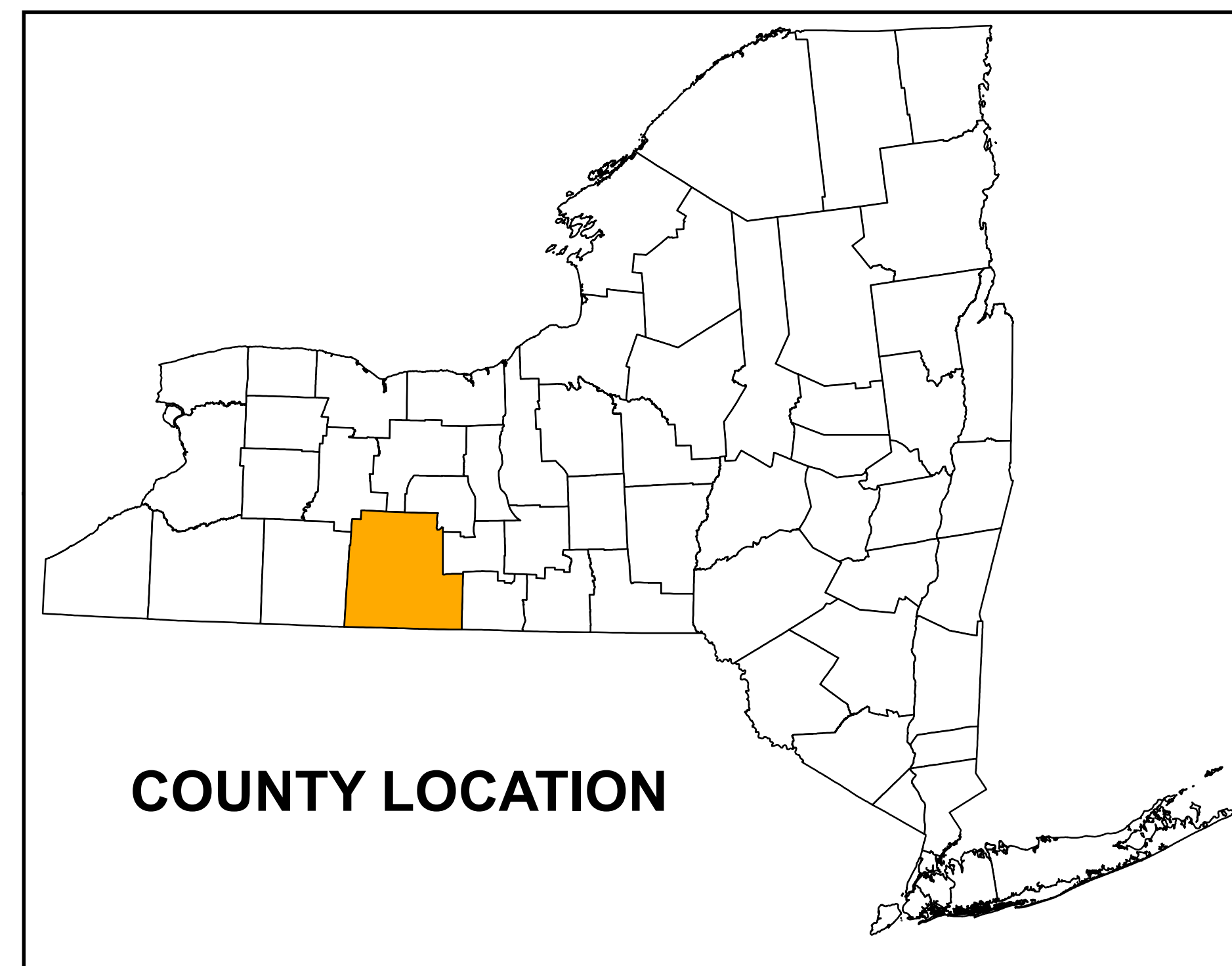
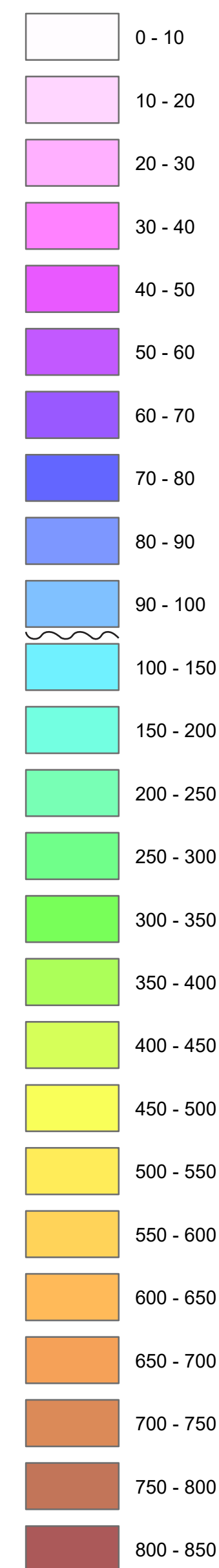
Summary

The New York State Museum Geological Survey has developed a detailed Bedrock Topography Map for Steuben County. This map represents a compilation of various surficial and subsurface bedrock data sources, analytical methods, and quality control procedures. The resulting bedrock elevations reveal a range of distinct geological features including a variety of Paleozoic bedrock erosional profiles, and evidence of past glaciation. These characteristics are likely the result of a variety of functions including bedrock stratigraphy, structural deformation, and erosional processes such as past glaciation and fluvial geomorphology. This map is significant for applications in geological research, engineering, natural resource management, and environmental studies. Continued research and work on subsurface geology will provide additional data and insight and enhance the geologic framework of bedrock geology throughout New York State.

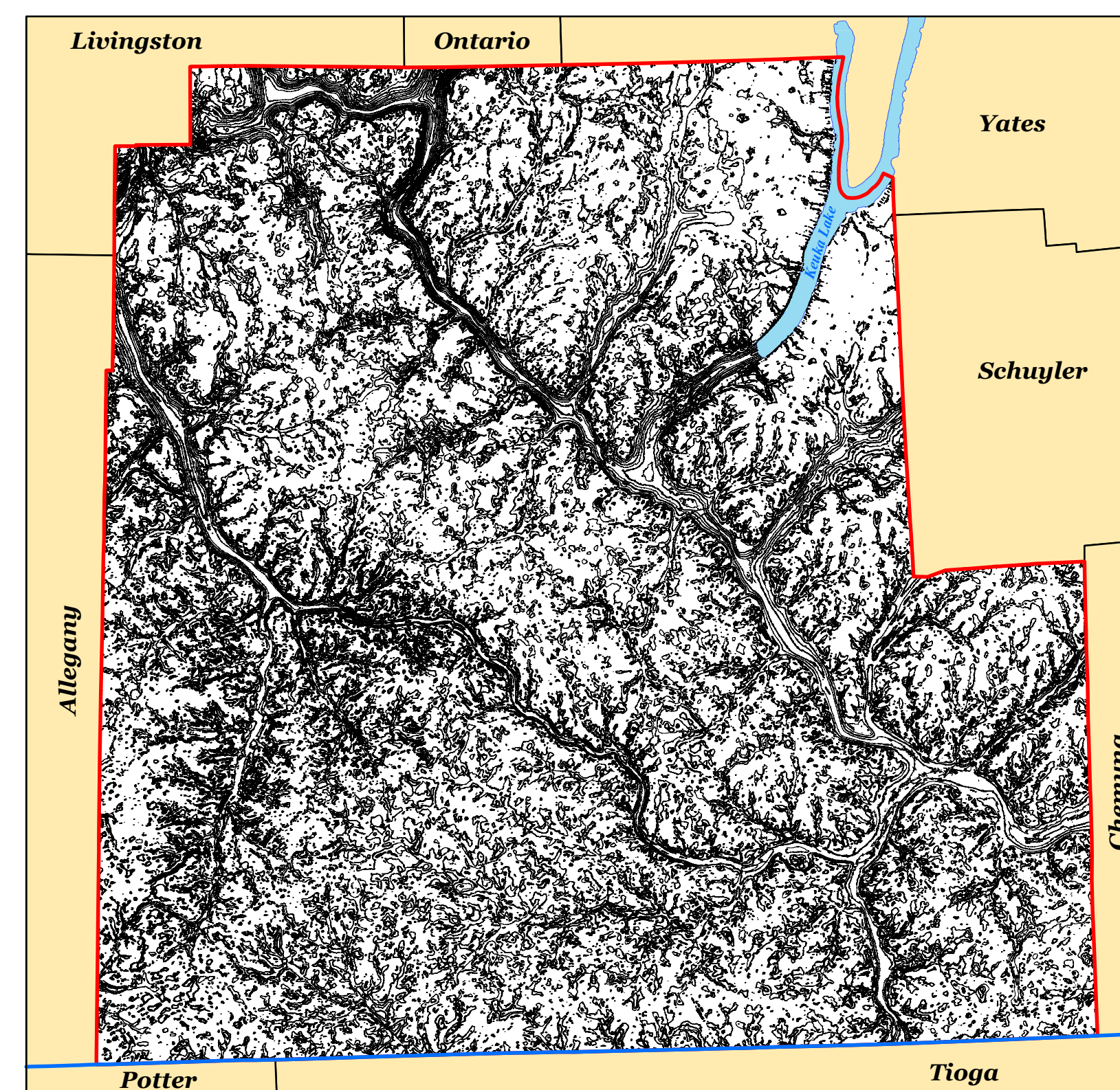
Explanation



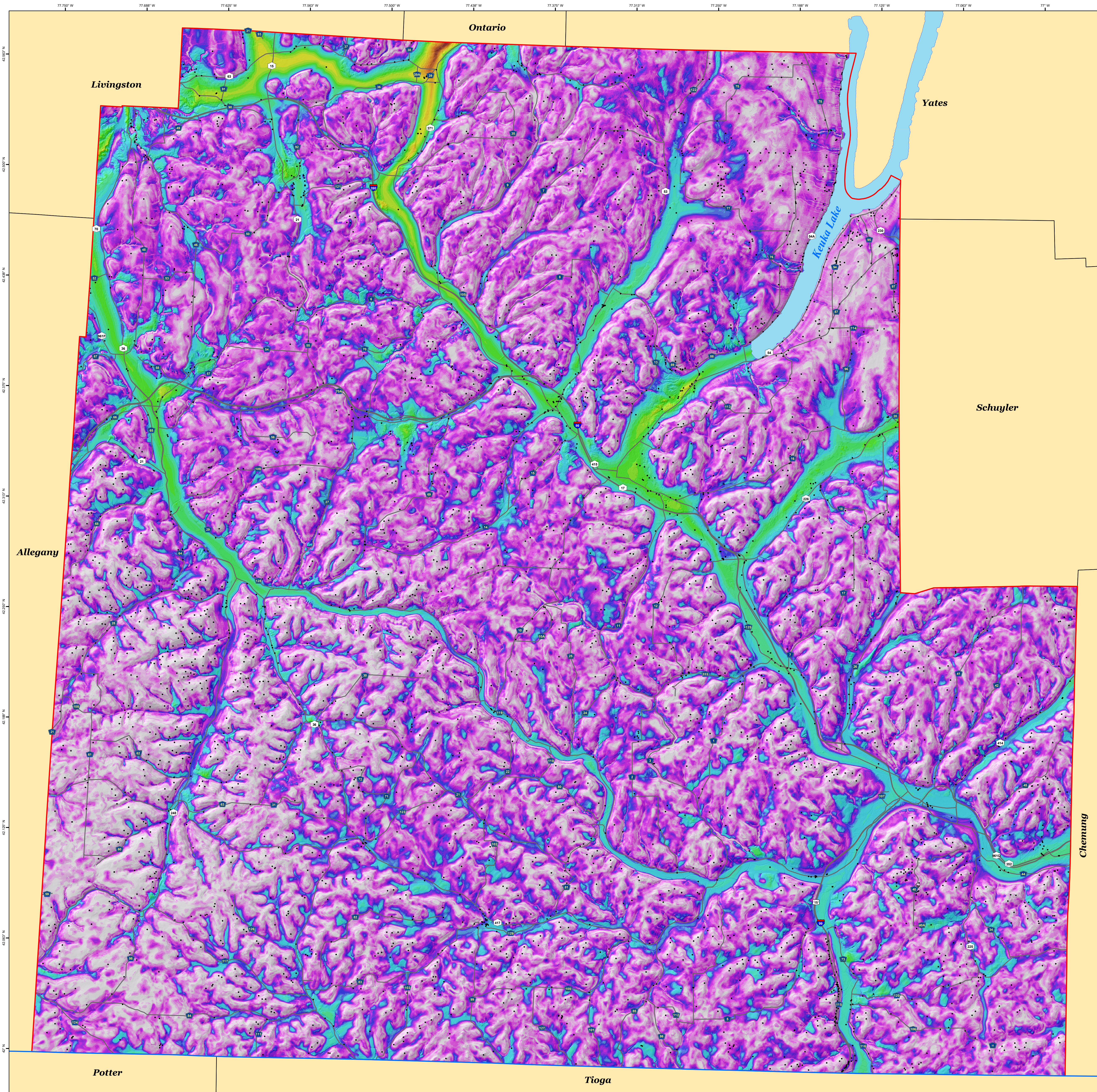
Drift Thickness

Feet Thick

DRIFT THICKNESS CONTOUR MAP



New York State Museum Map & Chart No. 212
ISSN:0097-3793 ; ISBN:978-1-55557-466-6



Digital Data and Cartography by R. Frieman, H. Forgeng and K. Backhaus, 2022-24

Universal Transverse Mercator, Zone 18 N North American Datum of 1983

Geographic and hydrography data obtained from the NYSGIS Clearinghouse (<https://gis.ny.gov/>)

Shaded relief from the ErieGeneseeLivingston and the 2019 FEMA 1m lidar dataset (<https://elevation.its.ny.gov/argis/rest/services>)

NOTICE

This geospatial map was funded in part by the USGS National Cooperative Geologic Mapping Program, Project #G20AC00048 in the year 2021.

The views and conclusions contained in this document are those of the authors and should not be interpreted as necessarily representing the official policies, either expressed or implied, of the U.S. Government.

While every effort has been made to ensure the integrity of this digital map and the textual data upon which it is based, the New York State Education Department ("NYSED") makes no representation or warranty regarding its accuracy, completeness, or usefulness for any particular purpose or state. NYSED assumes no liability for damages resulting from the use of this map and/or data. The user agrees to hold NYSED harmless from all claims, demands, damages, costs, expenses, attorney's fees, and other liabilities arising out of or from the use of this map and/or data.

© copyright 2021 by NYSED. All rights reserved.