

SURFICIAL GEOLOGY OF THE CAMILLUS 7.5-MINUTE QUADRANGLE, ONONDAGA COUNTY, NEW YORK

prepared by
Donald L. Pair, Janet Manchester and Karl J. Backhaus

Supported in part by the U.S Geological Survey Cooperative Agreement Number 06HQAG0014
National Cooperative Geologic Mapping Program (STATEMAP)

DESCRIPTION OF MAP UNITS

Holocene

- Ha**
- Stratified silt, sand and gravel (Ha)**
Sorted and stratified silt, sand, and gravel, deposited by rivers and streams. May include cobbles and boulders. Inferred as post-glacial alluvium and includes modern channel, over-bank and fan deposits
- Hw**
- Wetland Deposit (Hw)**
Peat, muck, marl, silt, clay or sand deposited in association with wetland environments. Various sediments can be present at transitional boundaries from one facies to another

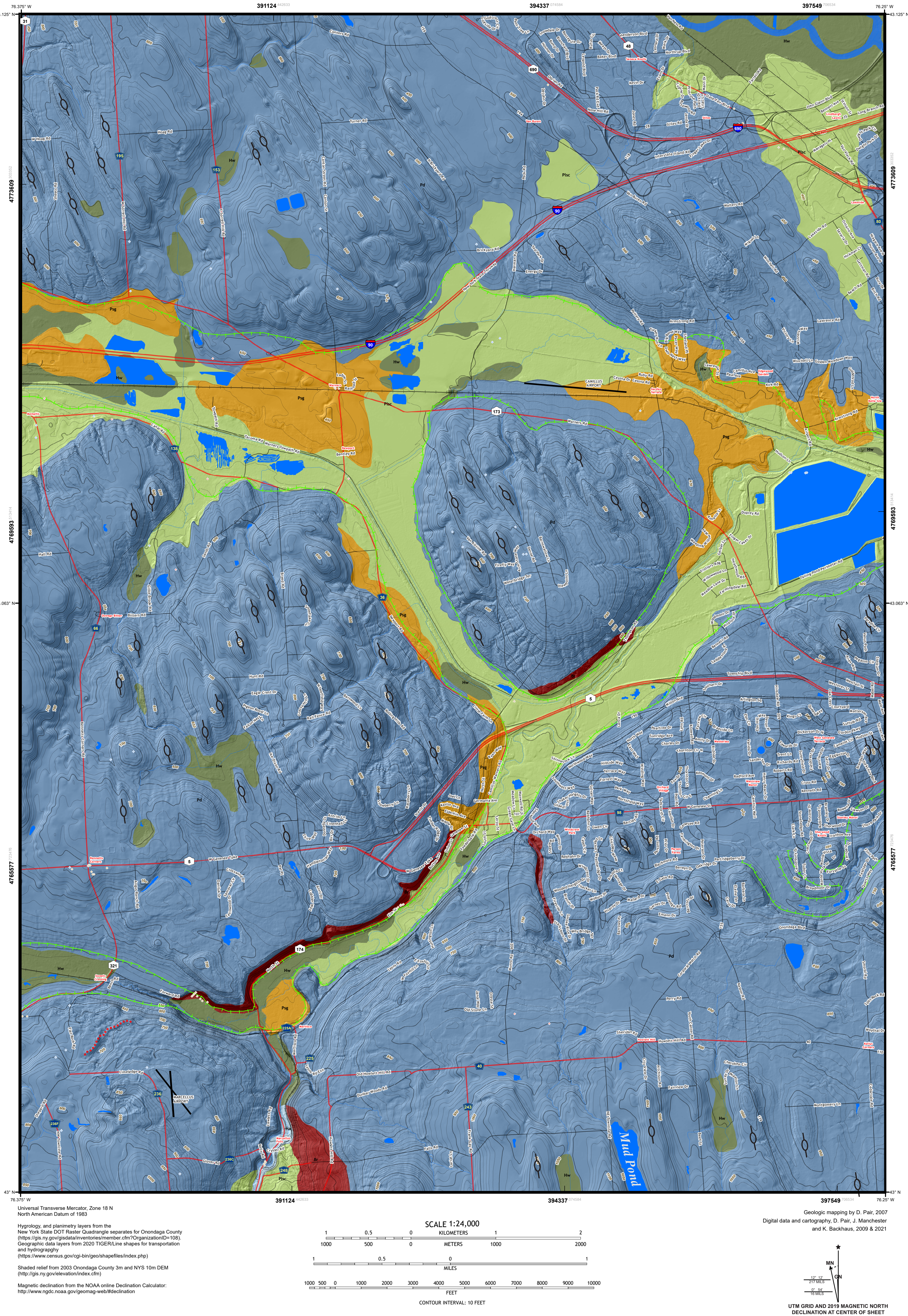
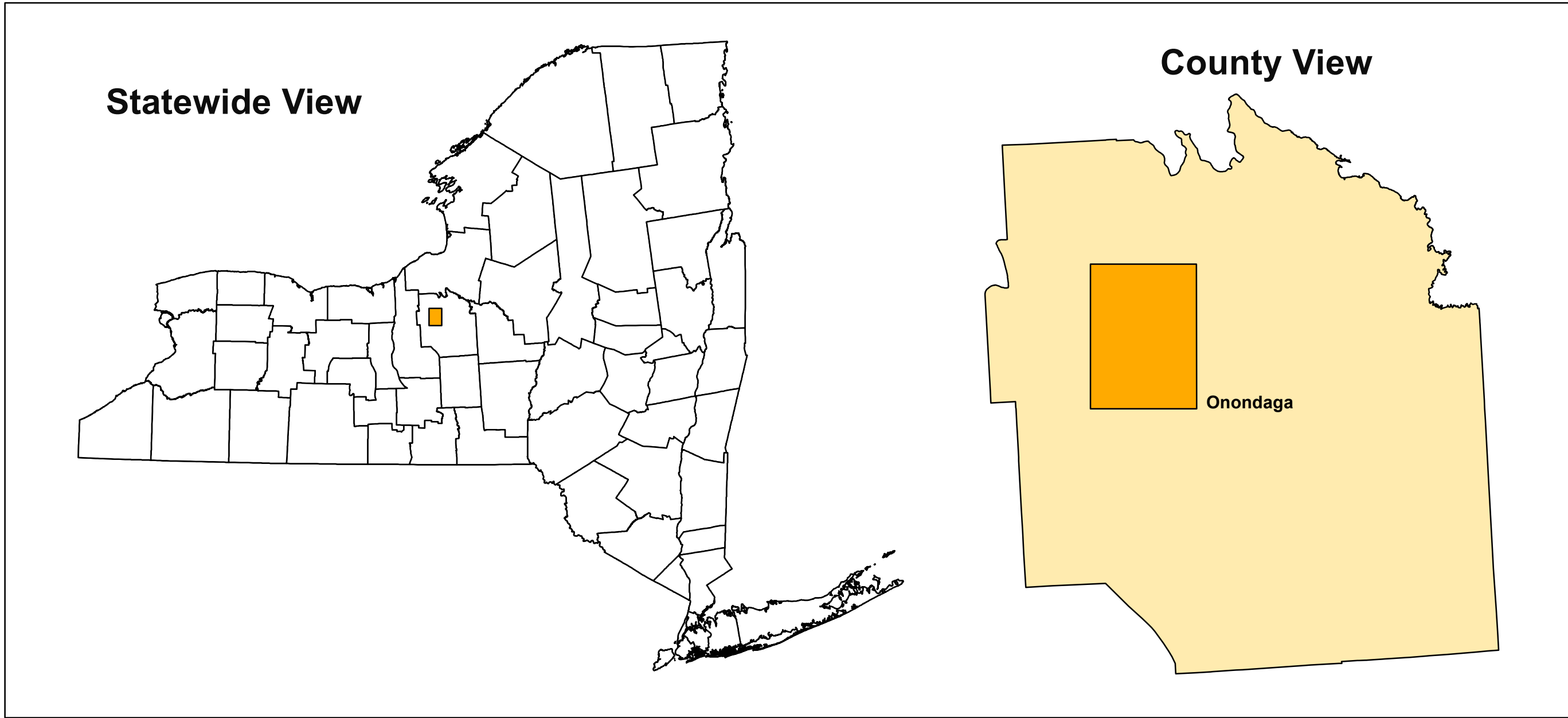
Pleistocene

- Plsc**
- Silt and Clay (Psc)**
Stratified, fine-grained sediment consisting of fine sand, silt and clay size particles. Inferred to be deposited in mid shore to deepwater settings of glacial lakes. May include marl, rythmites, and varves.
- Psg**
- Stratified sand and gravel (Psg)**
Well-sorted and stratified sand and gravel. May include cobbles and boulders. Inferred to be delta, fan or lag deposits in glacial channels or near former ice margins.
- Pd**
- Diamicton (Pd)**
An admixture of unsorted sediment ranging from clay to boulders. Generally matrix supported, massive and clast-rich.

Pre-Pleistocene

- Br**
- Bedrock (Br)**
Non-glacially derived, hard rock, pre-pleistocene in age. May be covered up to a meter in diamicton, sand and gravel, or sand and clay in areas marked as Br.

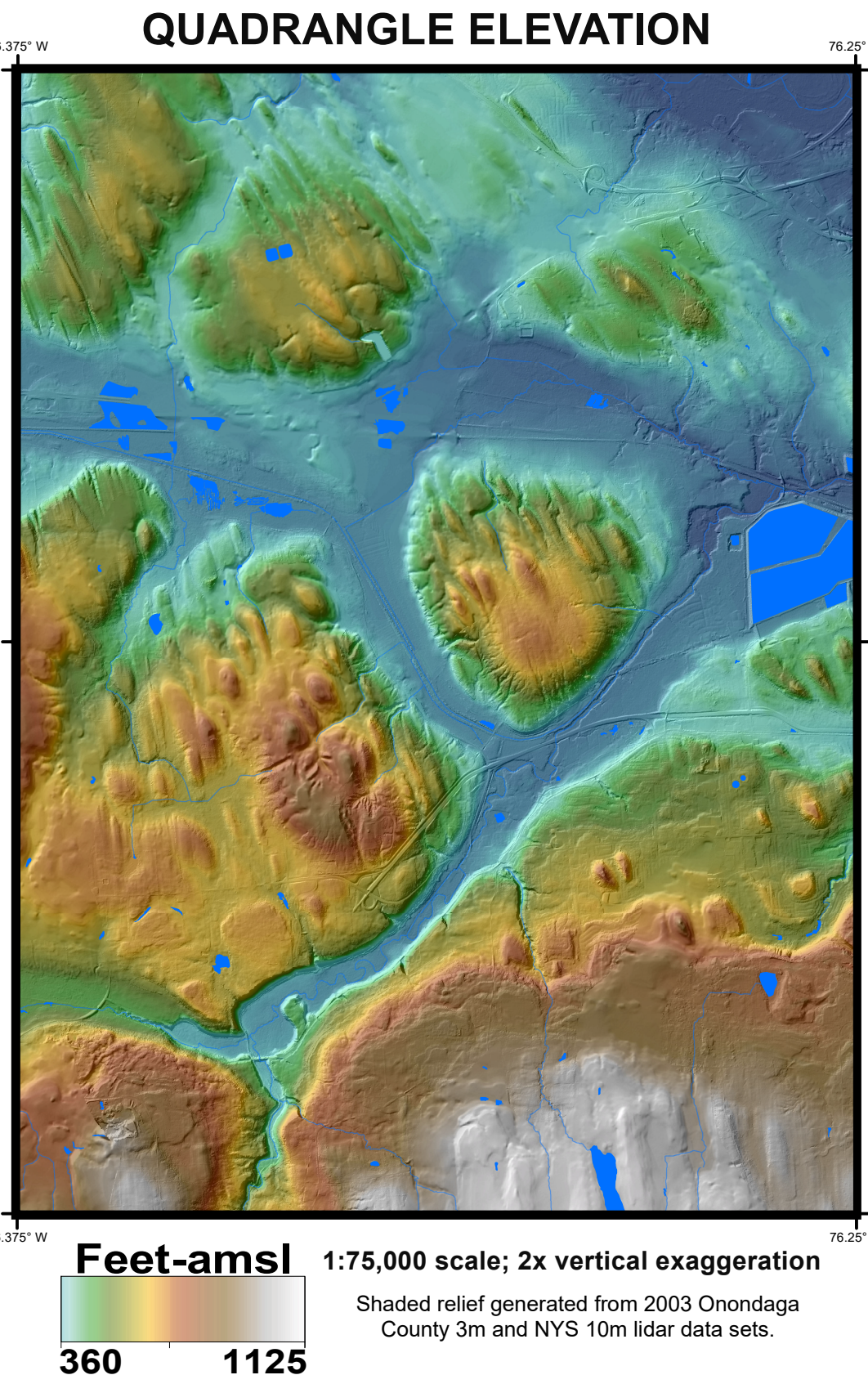
QUADRANGLE LOCATION



SYMBOLS		
Streets	Water Bodies	NYS Oil & Gas Well Location
Highways	Streams	Drumlins
Railroads	Contours	Ice Margins
Airport Runways	NYSDEC Water Well Location	Meltwater Channel
	NYSDOT Boring Location	

ADJOINING QUADRANGLES

Lyander	Baldwinsville	Brewerton
Jordan	Camillus	Syracuse West
Shanaweltre	Marcellus	South Onondaga



SURFICIAL GEOLOGY OF THE CAMILLUS 7.5-MINUTE QUADRANGLE, ONONDAGA COUNTY, NEW YORK

Donald L. Pair
2010

NOTICE
This geologic map was funded in part by the USGS National Cooperative Geologic Mapping Program STATEMAP award number 06HQAG0014 in the year 2007.
The views and conclusions contained in this document are those of the authors and should not be interpreted as necessarily presenting the official policies, either expressed or implied, of the U.S. Government.
While every effort has been made to ensure the integrity of this digital map and the factual data upon which it is based, the New York State Education Department ("NYSED") makes no representation or warranty, expressed or implied, with respect to its accuracy, completeness, or usefulness for any particular purpose or scale. NYSED assumes no liability for damages resulting from the use of any information, separate method, or process disclosed in this map and text, and urges independent site-specific verification of the information contained herein. Any use of trade, product, or firm names is for descriptive purposes only and does not imply endorsement by NYSED.