

SURFICIAL GEOLOGY OF THE SPAFFORD 7.5-MINUTE QUADRANGLE, CAYUGA, CORTLAND AND ONONDAGA COUNTIES, NEW YORK

prepared by
Brian C. Bird and Karl J. Backhaus

Supported in part by the U.S Geological Survey's National Cooperative Agreement Number 00HQAG0052
Geologic Mapping Program (STATEMAP)

DESCRIPTION OF MAP UNITS

Holocene

Af	Artificial Fill (Af) Surficial sediment composed of coarse/fine and or crushed rock anthropogenically transported and used for construction purposes.
Ha	Stratified silt, sand and gravel (Ha) Sorted and stratified silt, sand, and gravel, deposited by rivers and streams. May include cobbles and boulders. Inferred as post-glacial alluvium and includes modern channel, over-bank and fan deposits
Hw	Wetland Deposit (Hw) Peat, muck, marl, silt, clay or sand deposited in association with wetland environments. Various sediments can be present at transitional boundaries from one facies to another
Hdc	Diamict Colluvium (Hdc) Unsorted and unstratified deposit of gravel, sand, silt, clay, with boulders/cobbles possible. Described as a mass-wasting deposit at the base of steep hillslopes and cliffs as part of a slump or hillslope failure.

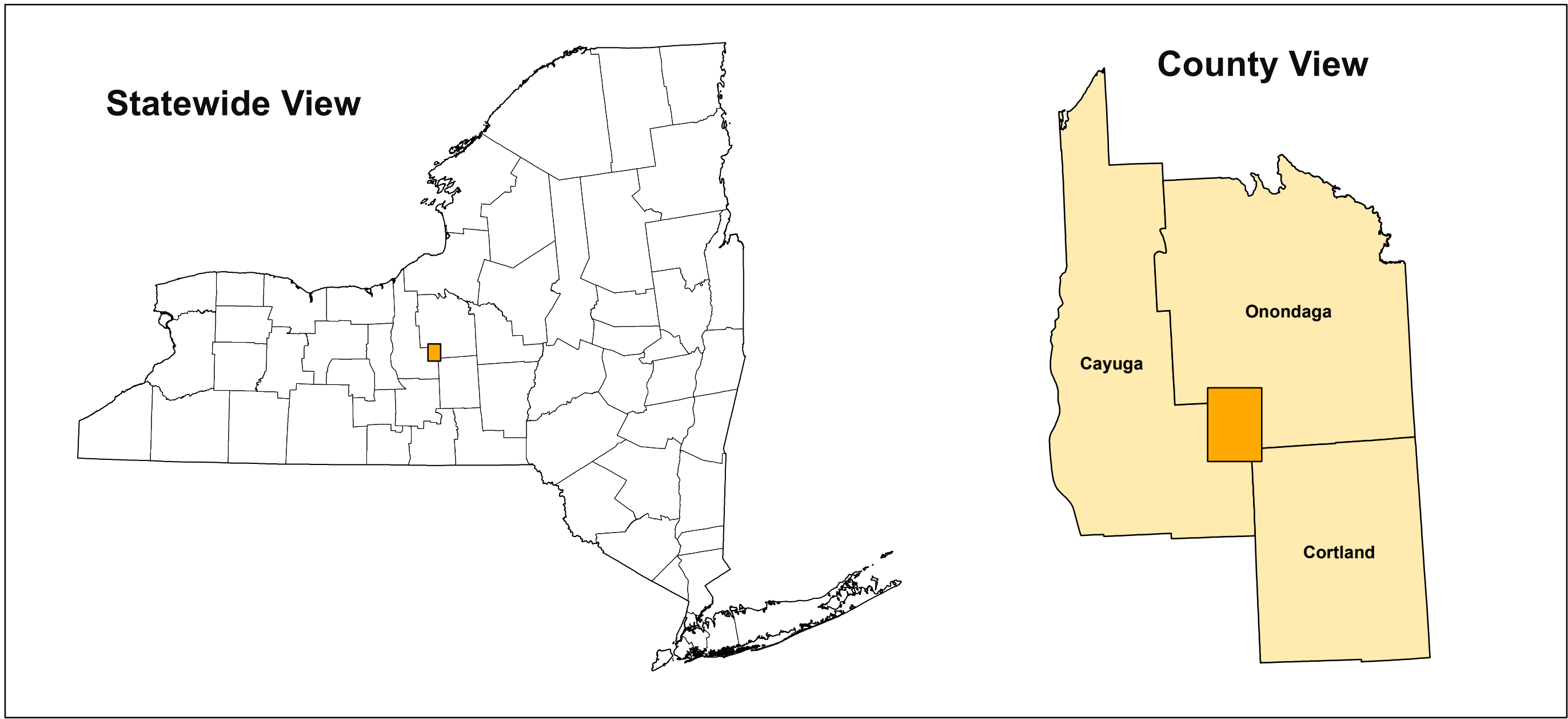
Pleistocene

Plsc	Silt and Clay (Psc) Stratified, fine-grained sediment consisting of fine sand, silt and clay size particles. Inferred to be deposited in mid shore to deepwater settings of glacial lakes. May include marl, rythmites, and varves.
Pics	Cobbles to Sand (Pics) Stratified ice contacted deposits, variable coarse-grained sediment consisting of boulders to sand size particles. Inferred to be deposited along an ice-margin. May include, interbedded coarse lenses of gravel and clast supported diamictions (flow tills).
Psg	Stratified sand and gravel (Psg) Well-sorted and stratified sand and gravel. May include cobbles and boulders. Inferred to be delta, fan or lag deposits in glacial channels or near former ice margins.
Pd	Diamicton (Pd) An admixture of unsorted sediment ranging from clay to boulders. Generally matrix supported, massive and clast-rich.

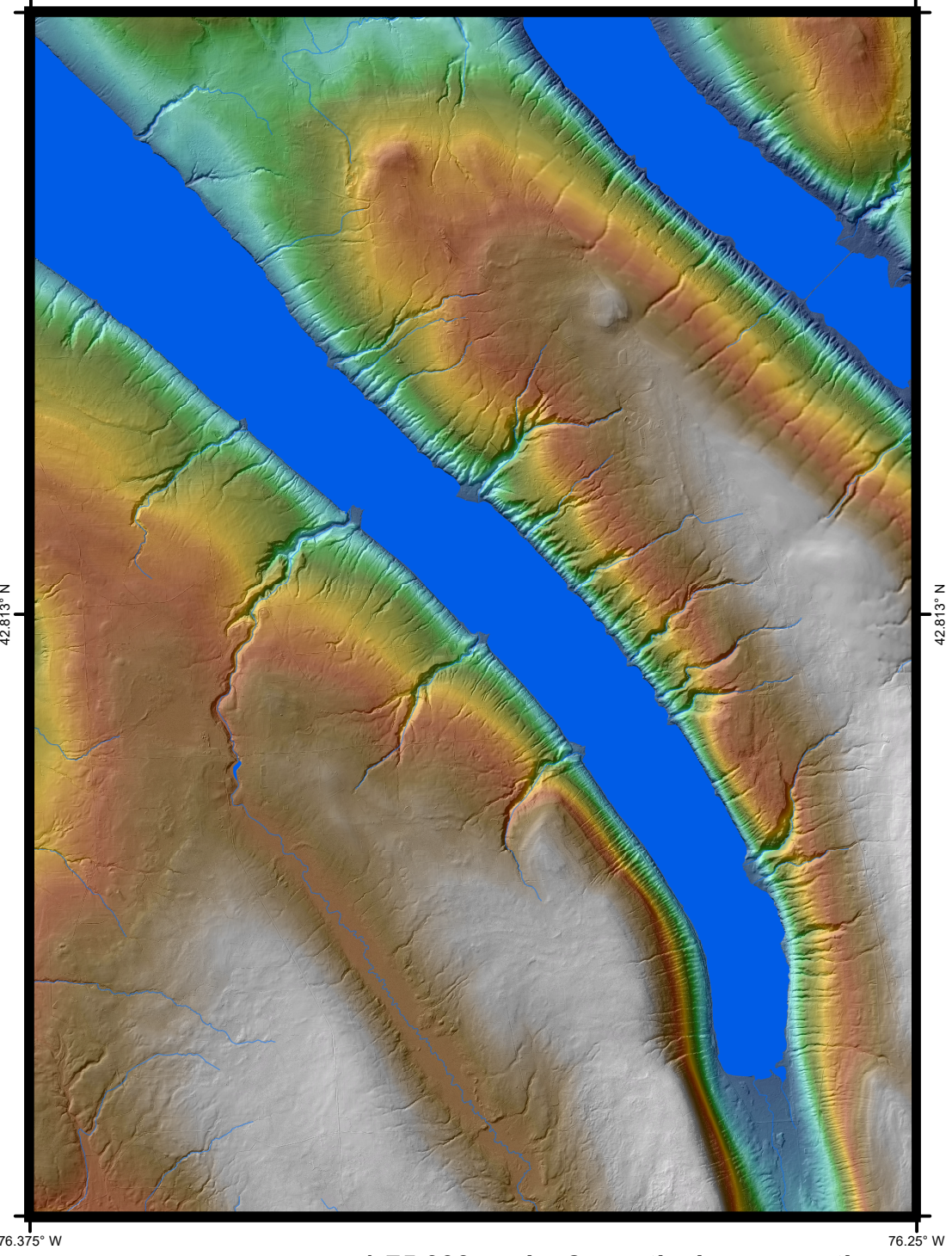
Pre-Pleistocene

Br	Bedrock (Br) Non-glacially derived, hard rock, pre-pleistocene in age. May be covered up to a meter in diamicton, sand and gravel, or sand and clay in areas marked as Br.
-----------	--

QUADRANGLE LOCATION



QUADRANGLE ELEVATION



Feet-amsl
785 1945

1:75,000 scale; 2x vertical exaggeration
Shaded relief generated from 2008 Cayuga County 1-meter, 2003-12 Onondaga County 3-meter and the New York State 10-meter lidar data sets.

SYMBOLS

Streets	Streams	Eskers
Highways	NYSGS Soil Sample Location	Ice Margins
County Lines	NYSDOT Water Well Location	Meltwater Channels
Contours	NYSDOT Boring Location	Meltwater Direction
Water Bodies	Drumlins	Spillways

ADJOINING QUADRANGLES

Skaneateles	Marcellus	South Onondaga
Onondaga	Spafford	Onondaga Valley
Marcellus	Saratoga	Homer

SURFICIAL GEOLOGY OF THE SPAFFORD 7.5-MINUTE QUADRANGLE, CAYUGA, CORTLAND, AND ONONDAGA COUNTIES, NEW YORK

Donald L. Pair, Brian C. Bird and Karl J. Backhaus
2011

NOTICE

This geologic map was funded in part by the USGS National Cooperative Geologic Mapping Program STATEMAP Award number: 00HQAG0052 in the year 2001.

The views and conclusions contained in this document are those of the authors and should not be interpreted as necessarily presenting the official policies, either expressed or implied, of the U.S. Government.

While every effort has been made to ensure the integrity of this digital map and the factual data upon which it is based, the New York State Education Department (NYSED) makes no representation or warranty, expressed or implied, with respect to its accuracy, completeness, or usefulness for any particular purpose or scale. NYSED assumes no liability for damages resulting from the use of any information, apparatus, method, or process disclosed in this map and text, and urges independent site-specific verification of the information contained herein. Any use of trade, product, or firm names is for descriptive purposes only and does not imply endorsement by NYSED.