

SURFICIAL GEOLOGY OF THE JAMESVILLE 7.5-MINUTE QUADRANGLE, ONONDAGA COUNTY, NEW YORK

prepared by
Donald L. Pair, Janet Manchester and Karl J. Backhaus

Supported in part by the U.S Geological Survey Cooperative Agreement Number 08HQAG0111
National Cooperative Geologic Mapping Program (STATEMAP)

DESCRIPTION OF MAP UNITS

Holocene

Af	Artificial Fill (Af) Surficial sediment composed of coarse/fine and or crushed rock anthropogenically transported and used for construction purposes.
Ha	Stratified silt, sand and gravel (Ha) Sorted and stratified silt, sand, and gravel, deposited by rivers and streams. May include cobbles and boulders. Inferred as post-glacial alluvium and includes modern channel, over-bank and fan deposits
Hw	Wetland Deposit (Hw) Peat, muck, marl, silt, clay or sand deposited in association with wetland environments. Various sediments can be present at transitional boundaries from one facies to another

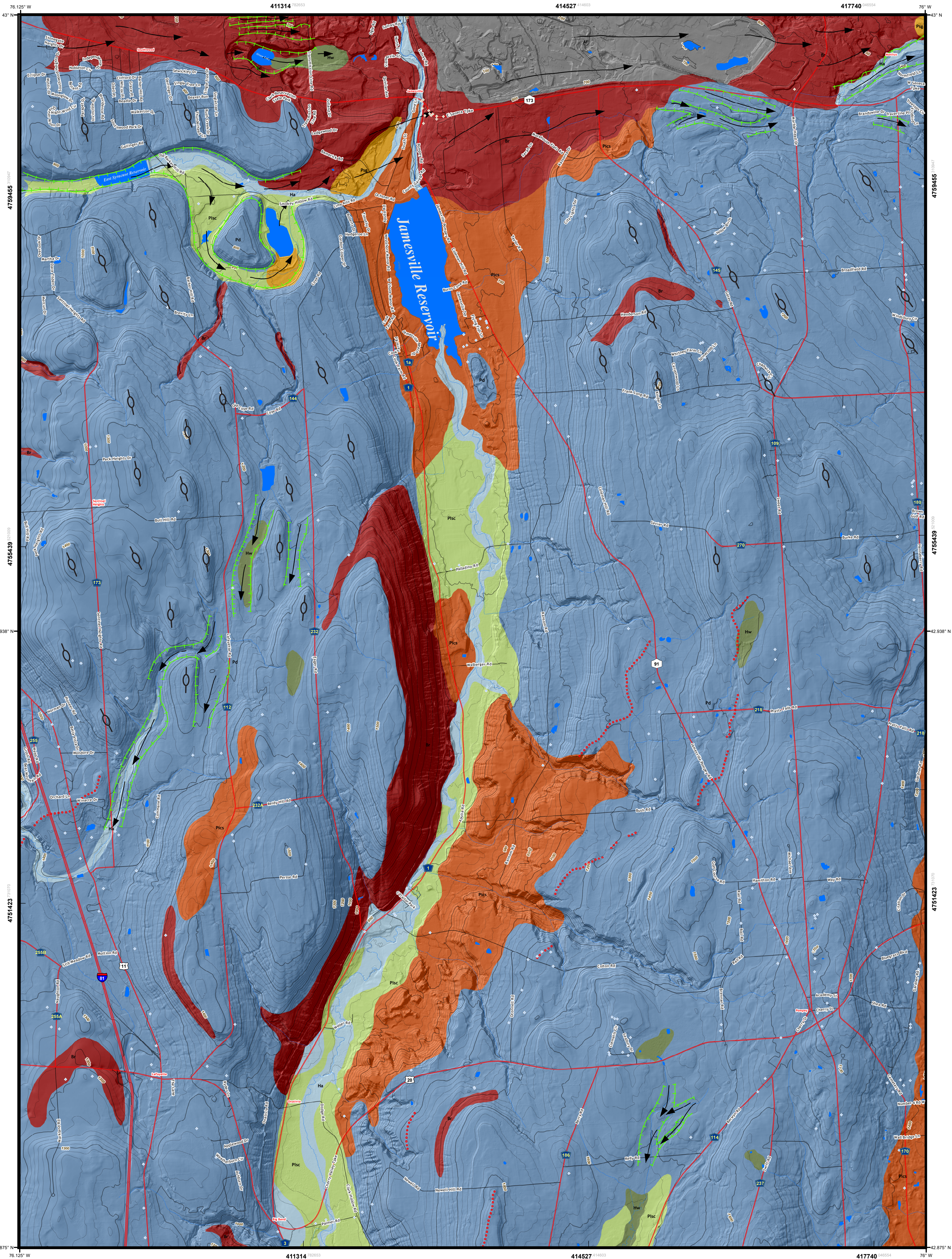
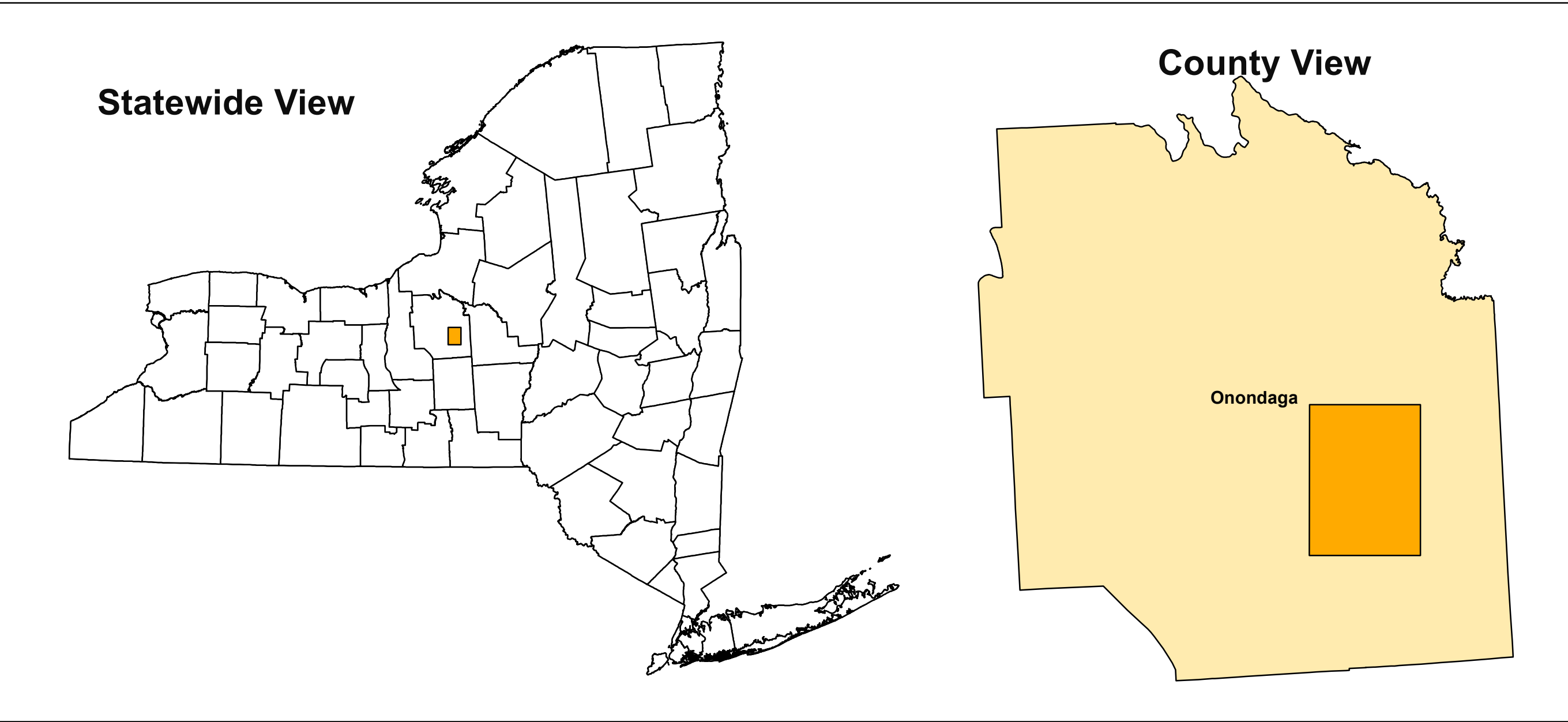
Pleistocene

Plsc	Silt and Clay (Psc) Stratified, fine-grained sediment consisting of fine sand, silt and clay size particles. Inferred to be deposited in mid shore to deepwater settings of glacial lakes. May include marl, rythmites, and varves.
Pics	Cobbles to Sand (Pics) Stratified ice contacted deposits, variable coarse-grained sediment consisting of boulders to sand size particles. Inferred to be deposited along an ice-margin. May include, interbedded coarse lenses of gravel and clast supported diamictos (flow tills).
Psg	Stratified sand and gravel (Psg) Well-sorted and stratified sand and gravel. May include cobbles and boulders. Inferred to be delta, fan or lag deposits in glacial channels or near former ice margins.
Pd	Diamicton (Pd) An admixture of unsorted sediment ranging from clay to boulders. Generally matrix supported, massive and clast-rich.

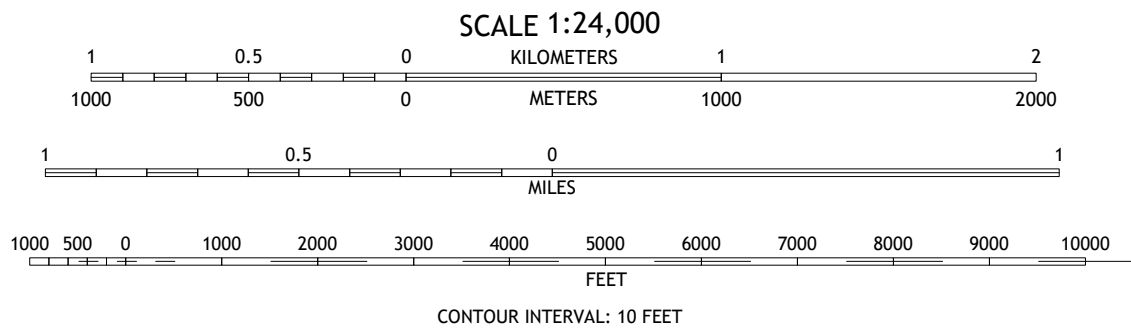
Pre-Pleistocene

Br	Bedrock (Br) Non-glacially derived, hard rock, pre-pleistocene in age. May be covered up to a meter in diamicton, sand and gravel, or sand and clay in areas marked as Br.
-----------	--

QUADRANGLE LOCATION



Hydrology, and planimetry layers from the
New York State DOT Raster Quadrangle (https://gis.ny.gov/gisdata/metadata/quarter.cfm?OrganizationID=108)
Geographic data layers from 2020 TIGER/Line shapes for transportation
and hydrography (https://www.census.gov/geographies/index.php)
Shaded relief from 2003 Onondaga County 3m and NYS 10m DEM
(http://gis.ny.gov/elevation/index.cfm)
Magnetic declination from the NOAA online Declination Calculator:
http://www.noaa.gov/geomag-web/declination



Geologic mapping by D. Pair, 1998, 2010
Digital data and cartography, K. Schoenberger, J. Manchester
and K. Backhaus, 2010, 2011 & 2021
UTM GRID AND 2019 MAGNETIC NORTH
DECLINATION AT CENTER OF SHEET

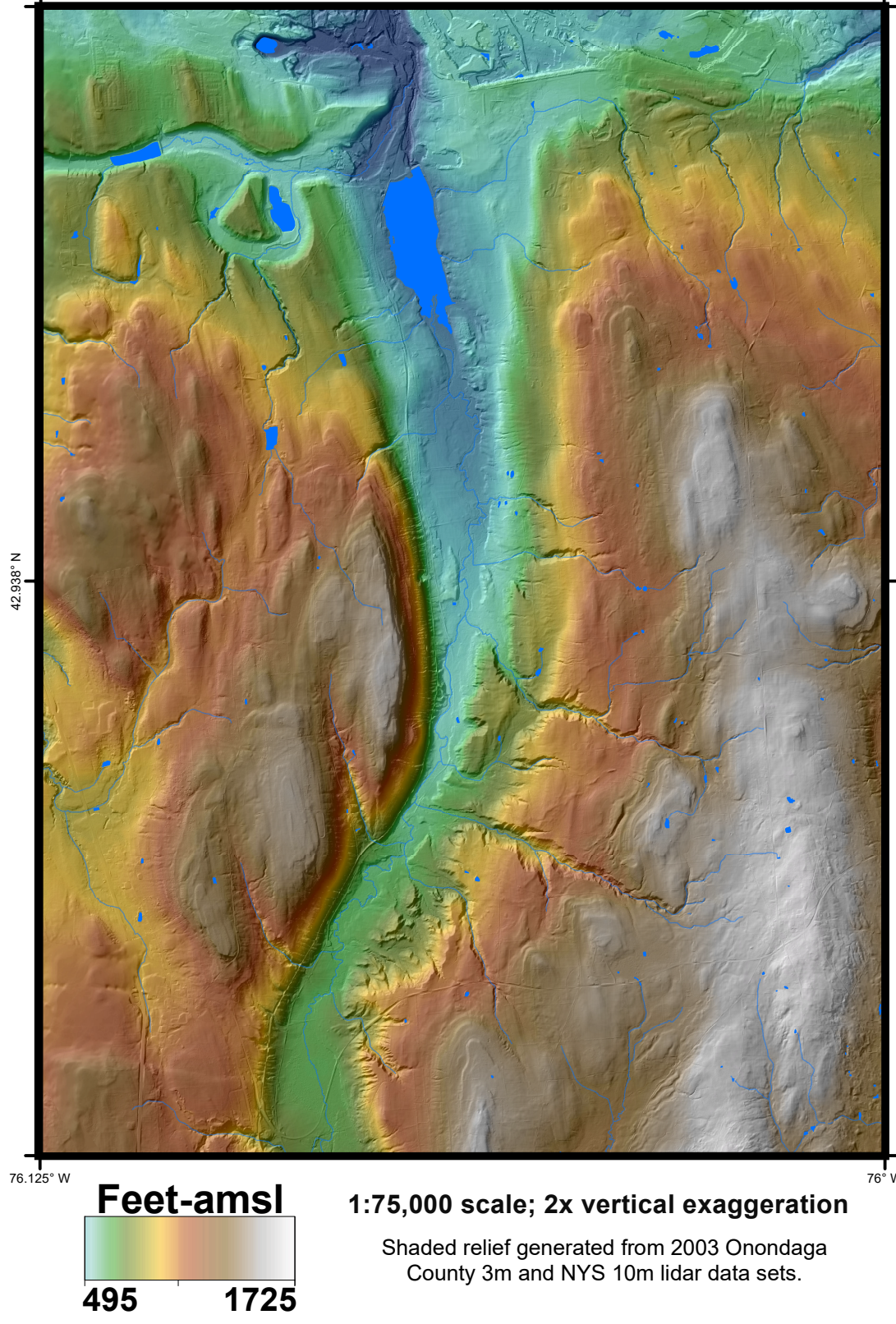
SYMBOLS

— Streets	— Streams	— Drumlins
— Highways	— Contours	— Meltwater Flow Direction
— Railroads	— NYSDEC Water Well Location	— Meltwater Channel
— Water Bodies	— NYSOT Boring Location	— Ice Margins

ADJOINING QUADRANGLES

Syracuse West	Syracuse East	Manlius
South Onondaga	Jamesville	Oran
Oran Valley	Tully	DeRuyter

QUADRANGLE ELEVATION



SURFICIAL GEOLOGY OF THE JAMESVILLE 7.5-MINUTE QUADRANGLE, ONONDAGA COUNTY, NEW YORK

Donald L. Pair
2011

NOTICE
This geologic map was funded in part by the USGS National Cooperative Geologic Mapping Program STATEMAP award number 08HQAG0111 in the year 2009.
The views and conclusions contained in this document are those of the authors and should not be interpreted as necessarily presenting the official policies, either expressed or implied, of the U.S. Government.
While every effort has been made to ensure the integrity of this digital map and the factual data upon which it is based, the New York State Education Department ("NYSED") makes no representation or warranty, expressed or implied, with respect to its accuracy, completeness, or usefulness for any particular purpose or scale. NYSED assumes no liability for damages resulting from the use of any information, apparatus, method, or process disclosed in this map and text, and urges independent site-specific verification of the information contained herein. Any use of trade, product, or firm names is for descriptive purposes only and does not imply endorsement by NYSED.