

SURFICIAL GEOLOGY OF THE SHANDAKEN 7.5-MINUTE QUADRANGLE, ULSTER COUNTY, NEW YORK

prepared by

Brian C. Bird, Colby A. Smith, Andrew L. Kozlowski and Karl J. Backhaus

Supported in part by the U.S Geological Survey Cooperative Agreement Number G09AC00171
National Cooperative Geologic Mapping Program (STATEMAP)

DESCRIPTION OF MAP UNITS

Holocene

Ha	Stratified silt, sand and gravel (Ha) Sorted and stratified silt, sand, and gravel, deposited by rivers and streams. May include cobbles and boulders. Inferred as post-glacial alluvium and includes modern channel, over-bank and fan deposits
Hw	Wetland Deposit (Hw) Peat, muck, marl, silt, clay or sand deposited in association with wetland environments. Various sediments can be present at transitional boundaries from one facies to another
Hdc	Diamict Colluvium (Hdc) Unsorted and unstratified deposit of gravel, sand, silt, clay, with boulders/cobbles possible. Described as a mass-wasting deposit at the base of steep hillslopes and cliffs as part of a slump or hillslope failure.

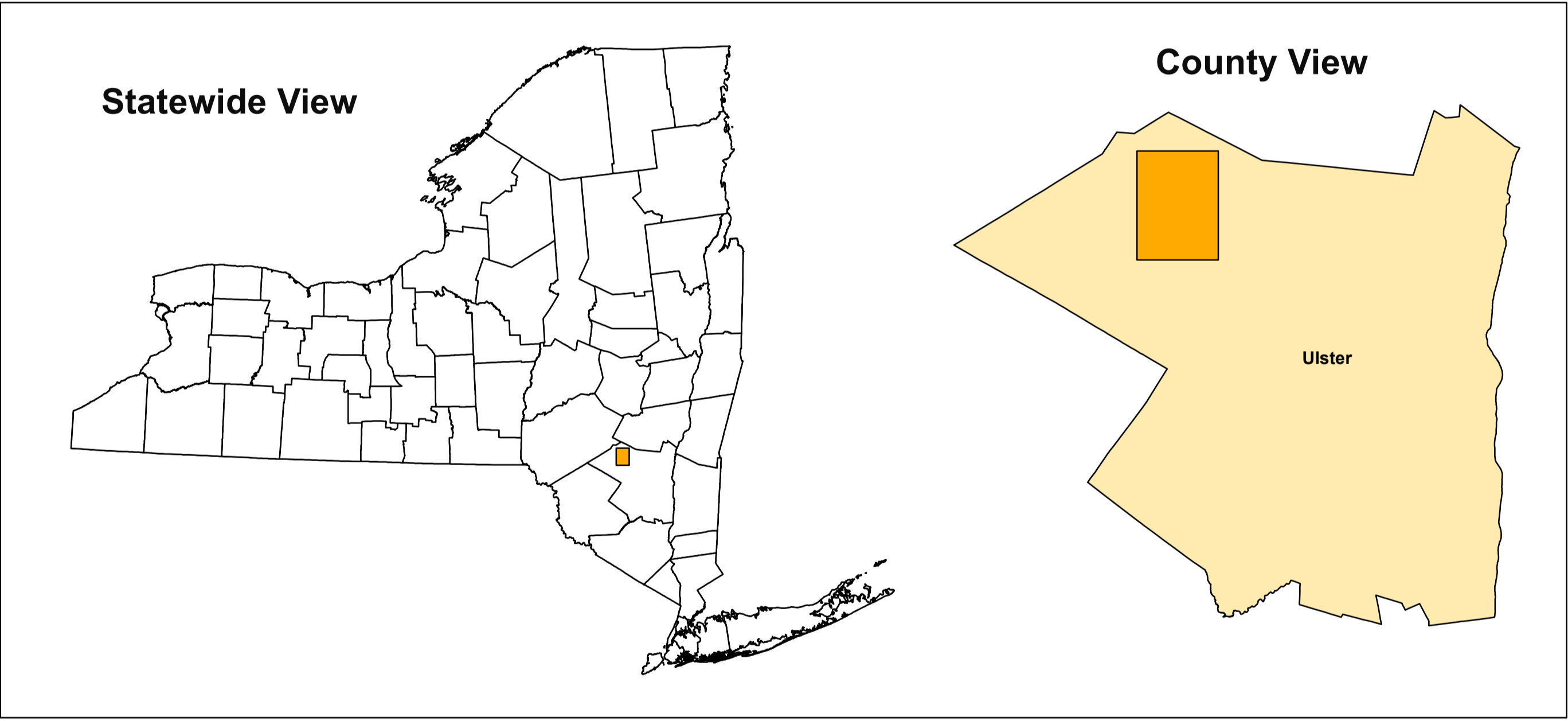
Pleistocene

Pics	Cobbles to Sand (Pics) Stratified ice contacted deposits, variable coarse-grained sediment consisting of boulders to sand size particles. Inferred to be deposited along an ice-margin. May include, interbedded coarse lenses of gravel and clast supported diamictons (flow tills).
Psg	Stratified sand and gravel (Psg) Well-sorted and stratified sand and gravel. May include cobbles and boulders. Inferred to be delta, fan or lag deposits in glacial channels or near former ice margins.
Pd	Diamicton (Pd) An admixture of unsorted sediment ranging from clay to boulders. Generally matrix supported, massive and clast-rich.

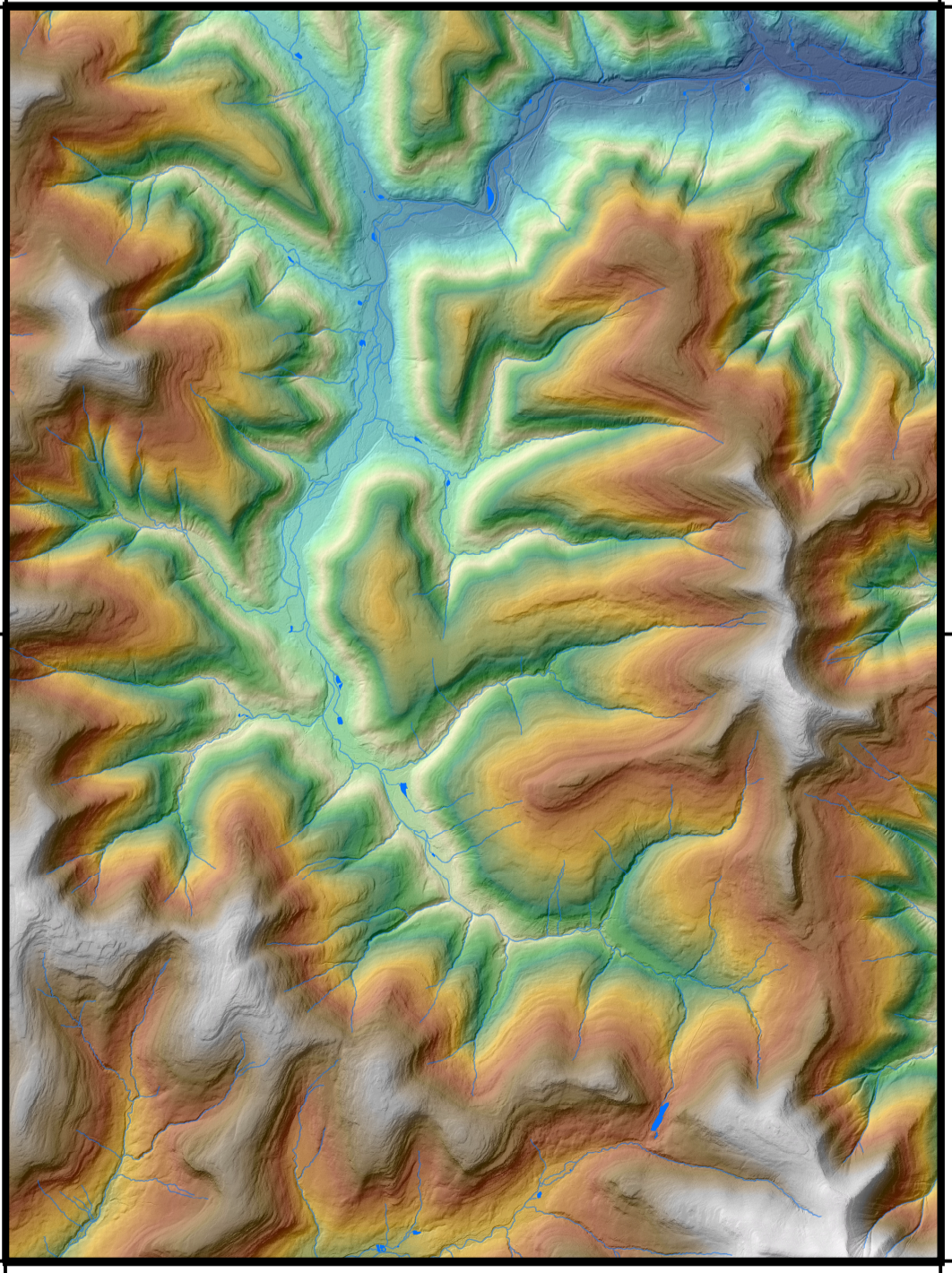
Pre-Pleistocene

Br	Bedrock (Br) Non-glacially derived, hard rock, pre-pleistocene in age. May be covered up to a meter in diamicton, sand and gravel, or sand and clay in areas marked as Br.
-----------	--

QUADRANGLE LOCATION



QUADRANGLE ELEVATION



SYMBOLS

Streets	Contours	Ice Margins
Highways	NYSDEC Water Well Location	Meltwater Channel
Water Bodies	NYSGS Borehole Location	Fault Line
Streams	NYSOT Boring Location	Erosional/Slump Scarp
	NYSDEC Oil & Gas Well Location	

ADJOINING QUADRANGLES

Fleischmanns	West Kill	Lexington
Seager	Shandaken	Phoenixia
Claryville	Peekamoose Mountain	West Shokan

SURFICIAL GEOLOGY OF THE SHANDAKEN 7.5-MINUTE QUADRANGLE, ULSTER COUNTY, NEW YORK

Colby A. Smith, Andrew L. Kozlowski and Paul A. Stefanik
2010

NOTICE
This geologic map was funded in part by the USGS National Cooperative Geologic Mapping Program STATEMAP award number G09AC00171 in the year 2010.
The views and conclusions contained in this document are those of the authors and should not be interpreted as necessarily presenting the official policies, either expressed or implied, of the U.S. Government.
While every effort has been made to ensure the integrity of this digital map and the factual data upon which it is based, the New York State Education Department ("NYSED") makes no representation or warranty, expressed or implied, with respect to its accuracy, completeness, or usefulness for any particular purpose or scale. NYSED assumes no liability for damages resulting from the use of any information, apparatus, method, or process disclosed in this map and text, and urges independent site-specific verification of the information contained herein. Any use of trade, product, or firm names is for descriptive purposes only and does not imply endorsement by NYSED.