

SURFICIAL GEOLOGY OF THE CAYUGA 7.5-MINUTE QUADRANGLE, CAYUGA AND SENECA COUNTIES, NEW YORK

Andrew L. Kozlowski, Brian C. Bird and Karl J. Backhaus
2009

SURFICIAL GEOLOGY OF THE CAYUGA 7.5-MINUTE QUADRANGLE, CAYUGA AND SENECA COUNTIES, NEW YORK

prepared by
Brian C. Bird, Andrew L. Kozlowski and Karl J. Backhaus

Supported in part by the U.S Geological Survey's
National Cooperative Geologic Mapping Program Great Lakes Mapping Coalition Award Number G09AC00460

DESCRIPTION OF MAP UNITS

Holocene

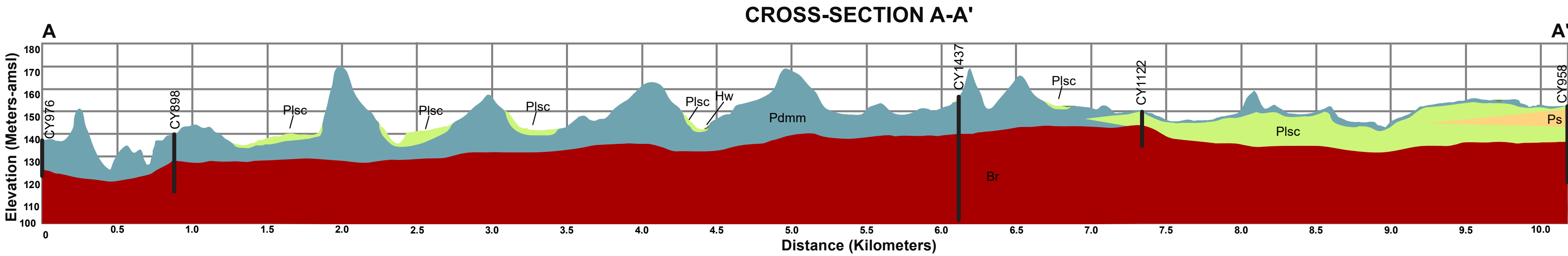
- Af** **Artificial Fill (Af)**
Surficial sediment composed of coarse/fine and or crushed rock anthropogenically transported and used for construction purposes.
- Ha** **Stratified silt, sand and gravel (Ha)**
Sorted and stratified silt, sand, and gravel, deposited by rivers and streams. May include cobbles and boulders. Inferred as post-glacial alluvium and includes modern channel, over-bank and fan deposits
- Hw** **Wetland Deposit (Hw)**
Peat, muck, marl, silt, clay or sand deposited in association with wetland environments. Various sediments can be present at transitional boundaries from one facies to another

Pleistocene

- Plsc** **Silt and Clay (Psc)**
Stratified, fine-grained sediment consisting of fine sand, silt and clay size particles. Inferred to be deposited in mid shore to deepwater settings of glacial lakes. May include marl, rythmites, and varves.
- Pics** **Cobbles to Sand (Pics)**
Stratified ice contacted deposits, variable coarse-grained sediment consisting of boulders to sand size particles. Inferred to be deposited along an ice-margin. May include, interbedded coarse lenses of gravel and clast supported diamictons (flow tills).
- Pdmm** **Diamicton (Pdmm)**
An admixture of unsorted sediment ranging from clay to boulders. Generally matrix supported, massive and clast-rich.

Pre-Pleistocene

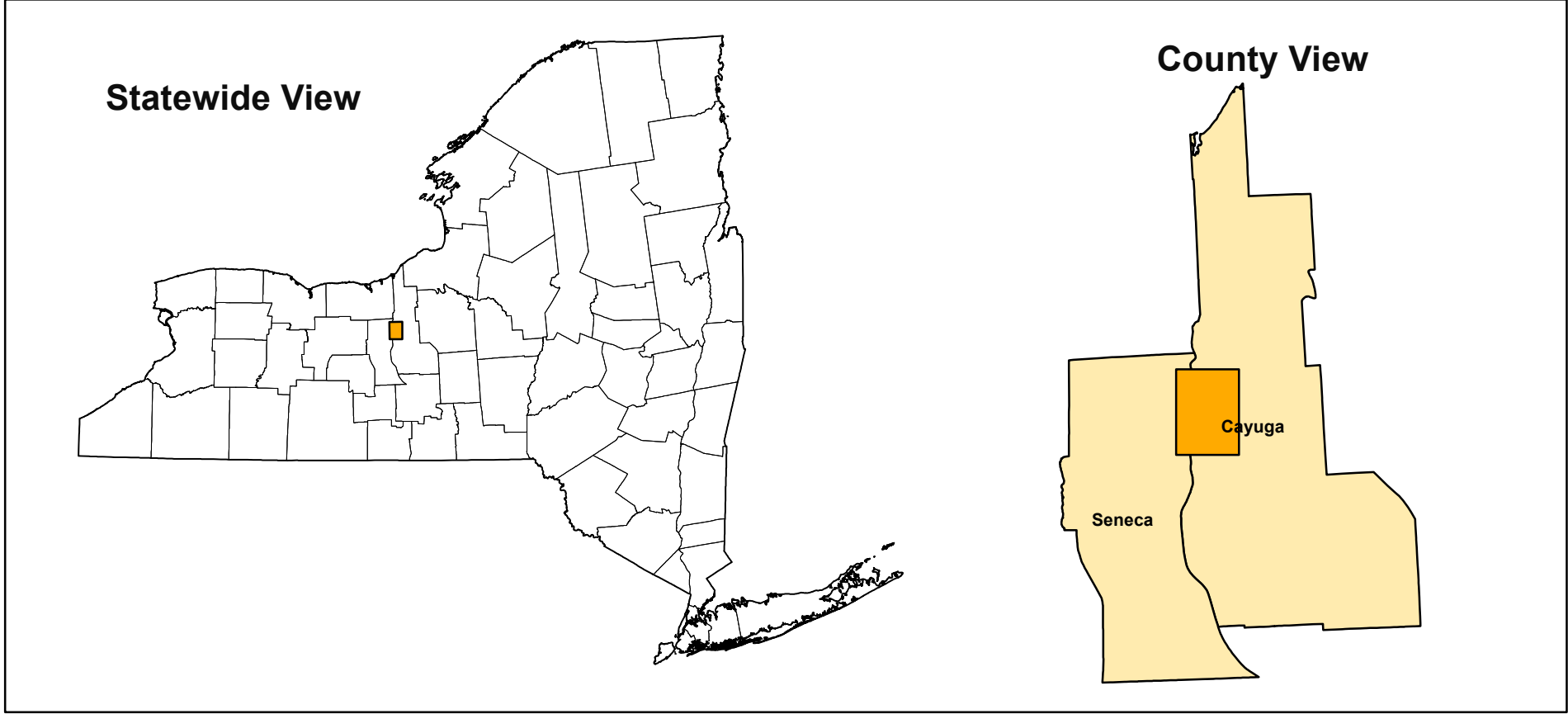
- Br** **Bedrock (Br)**
Non-glacially derived, hard rock, pre-pleistocene in age. May be covered up to a meter in diamicton, sand and gravel, or sand and clay in areas marked as Br.



SYMBOLS

Streets	Contours	NYSGS Borehole Location	Drumlins
Highways	Streams	NYSDEC Water Wells	Eskers
Railroads	Cross-Section Line	NYSDEC Boring Location	Ice Margin
County Line	NYSGS Soil Sample Location	NYSDEC Oil & Gas Well Location	Meltwater Channels
Water Bodies			Hummocky Terrain

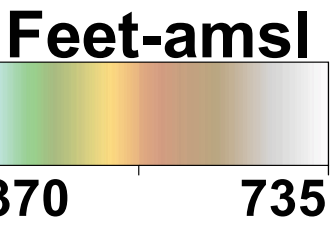
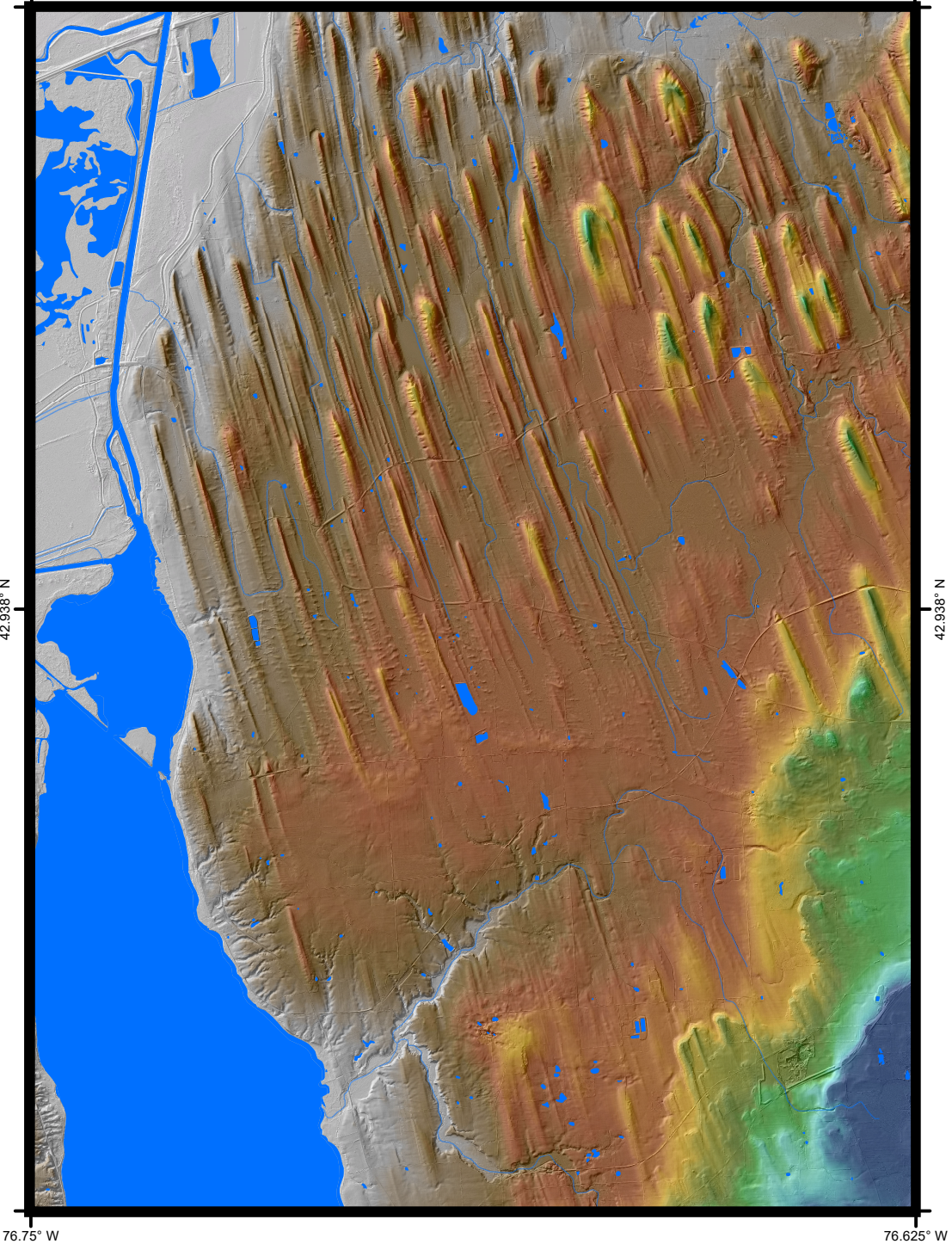
QUADRANGLE LOCATION



ADJOINING QUADRANGLES

Savannah	Monacauna	Wheatport
Seneca Falls	Cayuga	Auburn
Romulus	Union Springs	Scipio Center

QUADRANGLE ELEVATION



1:75,000 scale; 2x vertical exaggeration
Shaded relief generated from 2012 Seneca Lake Watershed 2m, the 2018 Cayuga County 1m and the NYS 10m lidar data sets.

NOTICE
This geologic map was funded in part by the USGS National Cooperative Geologic Mapping Program Great Lakes Mapping Coalition award number G09AC00460 in the year 2009.
The views and conclusions contained in this document are those of the authors and should not be interpreted as necessarily presenting the official policies, either expressed or implied, of the U.S. Government.
While every effort has been made to ensure the integrity of this digital map and the factual data upon which it is based, the New York State Education Department ("NYSED") makes no representation or warranty, expressed or implied, with respect to its accuracy, completeness, or usefulness for any particular purpose or scale. NYSED assumes no liability for damages resulting from the use of any information, apparatus, method, or process disclosed in this map and text, and urges independent site-specific verification of the information contained herein. Any use of trade, product, or firm names is for descriptive purposes only and does not imply endorsement by NYSED.