

EXPLANATION

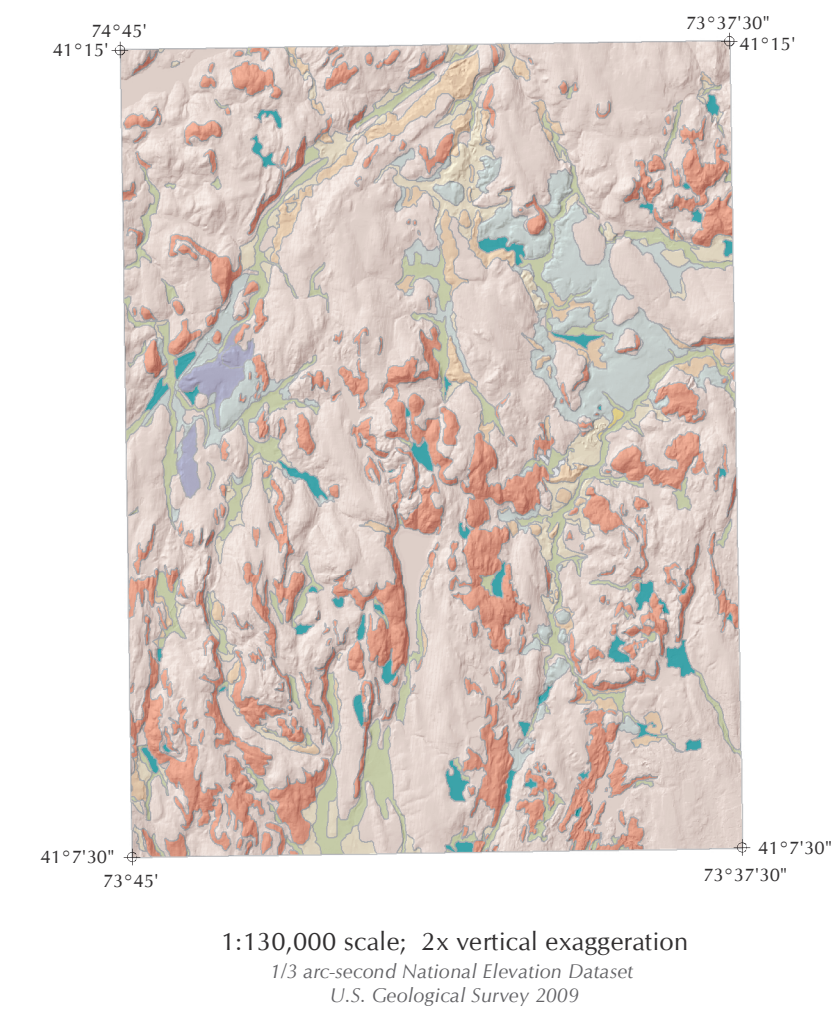
GEOLOGIC UNITS

- Qa** **Alluvium:** Sorted and stratified silt, sand, gravel, and cobbles deposited by rivers and streams. Alluvium includes channel, overbank, and fan deposits.
- Hw** **Wetland Deposit:** Peat, muck, clay, silt, and sand deposited in modern wetland environments. There is often a gradational change to alluvial or lacustrine deposits.
- Qd** **Lacustrine delta:** Stratified gravel, sand, and silt with lesser amounts of clay deposited at or near deltas fed by glacial meltwater channels or basin-contained meteoric waters.
- Pls** **Glaciolacustrine sand:** Thickness 3-15 m. Well-sorted and stratified sand deposited in proglacial lakes formed by the impoundment of meltwater between higher ground or moraines and the receding ice margin. Water levels of these lakes were controlled by the opening of progressively lower spillways as the ice margin retreated.
- Pics** **Ice-contact Stratified Drift:** Well-sorted and stratified sand, gravel, and cobbles, deposited in contact with former glaciers. Stratified drift includes kames, kame moraines, and kame terraces.
- Po** **Outwash:** Well sorted gravel deposited pro-glacially from actively retreating glacial front, usually as an outwash plain.
- Pt** **Till:** Massive diamicton composed of sediments ranging in size from clay through boulders, deposited directly by glacial ice. Sediments are highly compacted due to deposition beneath glacial ice.
- Br** **Bedrock:** Local bedrock exposure at or 1m below surface.

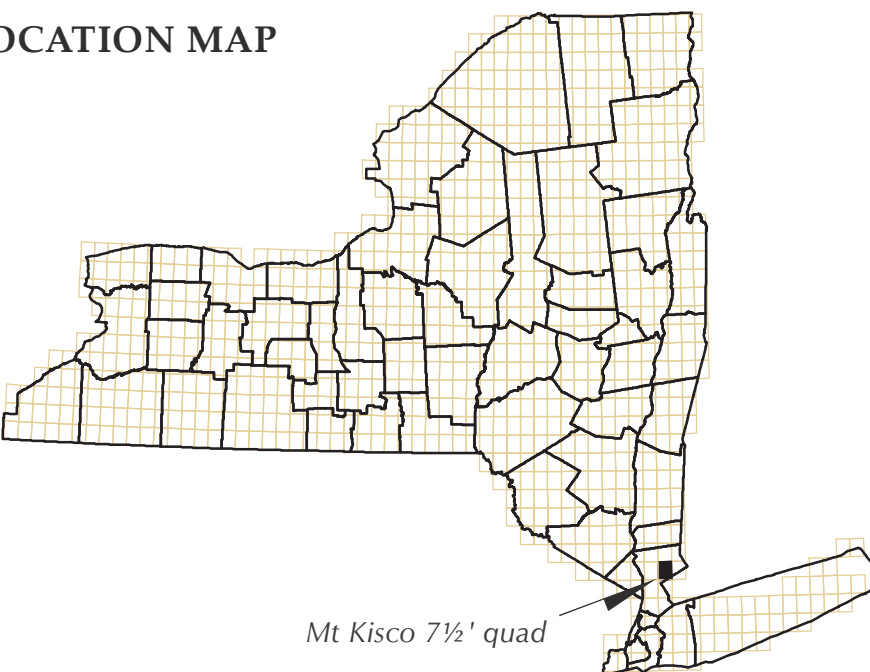
GEOLOGIC SYMBOLS

- Contact
- Esker
Sinuous sand and gravel ridge deposited in a sub-glacial stream.
- Terrace
- ⊖ Drumlin

SHADED TERRAIN MAP



LOCATION MAP



NOTICE

This geologic map was funded (in 2011) in part by the USGS National Cooperative Geologic Mapping Program. The views and conclusions contained in this document are those of the authors and should not be interpreted as necessarily representing the official policies, either expressed or implied, of the U.S. Government.

While every effort has been made to ensure the integrity of this digital map and the factual data upon which it is based, the New York State Education Department ("NYSED") makes no representation or warranty, expressed or implied, with respect to its accuracy, completeness, or usefulness for any particular purpose or scale. NYSED assumes no liability for damages resulting from the use of any information, apparatus, method, or process disclosed in this map and text, and urges independent site-specific verification of the information contained herein. Any use of trade, product, or firm names is for descriptive purposes only and does not imply endorsement by NYSED.

SURFICIAL GEOLOGY OF THE MOUNT KISCO QUADRANGLE, NEW YORK

G. Gordon Connolly

2011

New York State Museum Map & Chart No. 73
ISSN: 0097-3793; ISBN: 978-1-55557-330-0