

SURFICIAL GEOLOGY OF THE VICTORY 7.5-MINUTE QUADRANGLE, CAYUGA AND WAYNE COUNTIES, NEW YORK

prepared by

Andrew L. Kozlowski, Brian C. Bird and Karl J. Backhaus

Supported in part by the U.S Geological Survey Cooperative Agreement Number GA11AC20362
National Cooperative Geologic Mapping Program (STATEMAP)

DESCRIPTION OF MAP UNITS

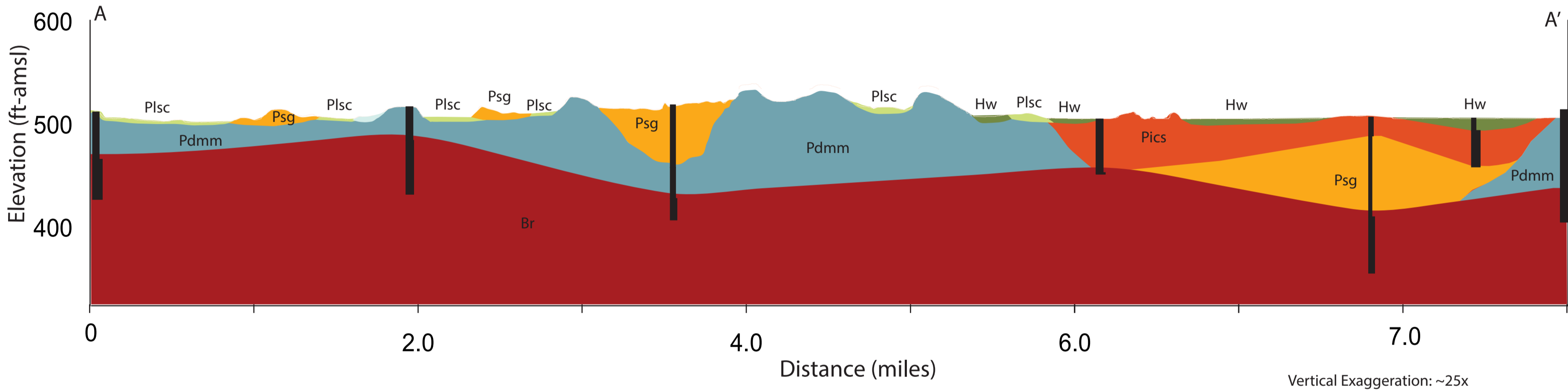
Holocene

Ha	Stratified silt, sand and gravel (Ha) Sorted and stratified silt, sand, and gravel, deposited by rivers and streams. May include cobbles and boulders. Inferred as post-glacial alluvium and includes modern channel, over-bank and fan deposits
Hw	Wetland Deposit (Hw) Peat, muck, marl, silt, clay or sand deposited in association with wetland environments. Various sediments can be present at transitional boundaries from one facies to another

Pleistocene

Ps	Stratified Sand (Ps) Well sorted and stratified sand, deposited by fluvial, lacustrine or eolian processes. Inferred as deposits associated with distal glacial environments.
Plsc	Silt and Clay (Psc) Stratified, fine-grained sediment consisting of fine sand, silt and clay size particles. Inferred to be deposited in mid shore to deepwater settings of glacial lakes. May include marl, rythmites, and varves.
Pics	Cobbles to Sand (Pics) Stratified ice contacted deposits, variable coarse-grained sediment consisting of boulders to sand size particles. Inferred to be deposited along an ice-margin. May include, interbedded coarse lenses of gravel and clast supported diamictons (flow tills).
Psg	Stratified sand and gravel (Psg) Well-sorted and stratified sand and gravel. May include cobbles and boulders. Inferred to be delta, fan or lag deposits in glacial channels or near ice margins.
Pdmm	Diamicton (Pdmm) An admixture of unsorted sediment ranging from clay to boulders. Generally matrix supported, massive and clast-rich.

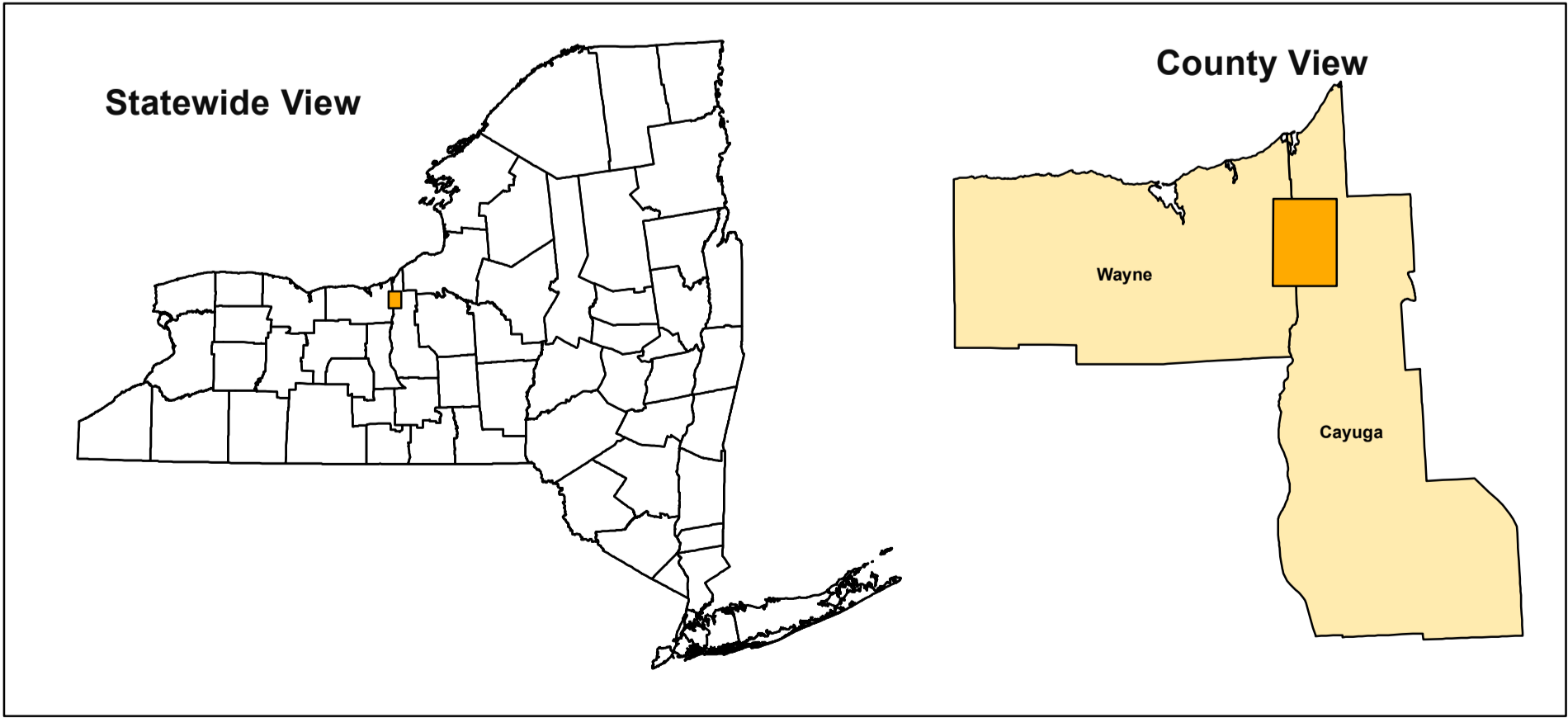
CROSS-SECTION A-A'



SYMBOLS

Streets	Water Bodies	NYSGS Soil Sample Location	Drumlins
Streets	Streams	NYSDEC Water Well Location	Meltwater Channel
Railroads	Contours	NYSOT Boring Location	Lake Iroquois Shoreline
County Line	Cross-Section Line	NYSDEC Oil & Gas Well Location	Eskers
			Ice Margin

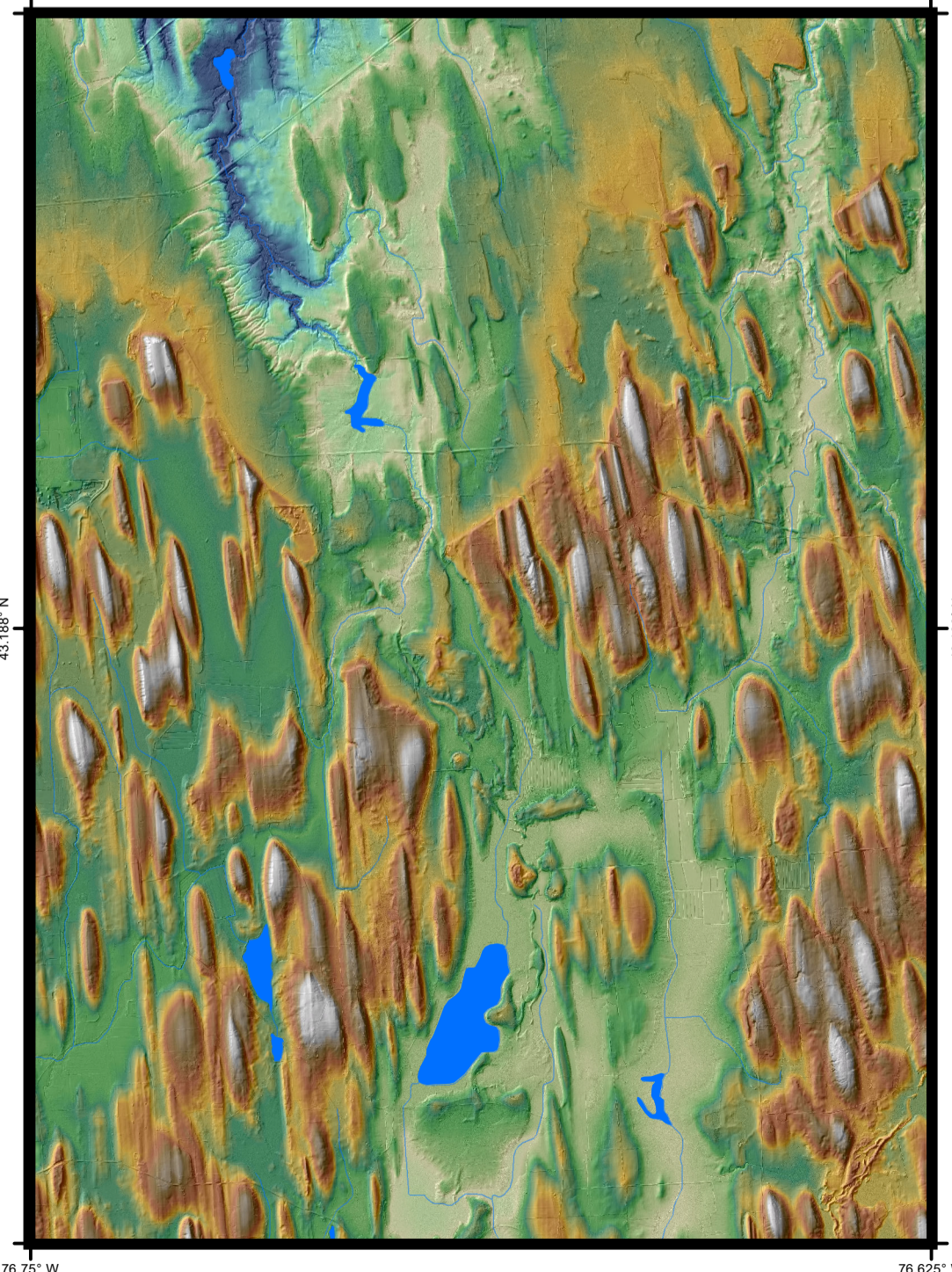
QUADRANGLE LOCATION



ADJOINING QUADRANGLES

North Wolcott	Fair Haven	Hambill
Wolcott	Victory	Cato
Savannah	Montezuma	Wesport

QUADRANGLE ELEVATION



SURFICIAL GEOLOGY OF THE VICTORY 7.5-MINUTE QUADRANGLE, CAYUGA AND WAYNE COUNTIES, NEW YORK

Brian C. Bird, Andrew L. Kozlowski and Karl J. Backhaus
2011

NOTICE
This geologic map was funded in part by the USGS National Cooperative Geologic Mapping Program Great Lakes Mapping Coalition award number GA11AC20362 in the year 2011.
The views and conclusions contained in this document are those of the authors and should not be interpreted as necessarily presenting the official policies, either expressed or implied, of the U.S. Government.
While every effort has been made to ensure the integrity of this digital map and the factual data upon which it is based, the New York State Education Department ("NYSED") makes no representation or warranty, expressed or implied, with respect to its accuracy, completeness, or usefulness for any particular purpose or scale. NYSED assumes no liability for damages resulting from the use of any information, apparatus, method, or process disclosed in this map and text, and urges independent site-specific verification of the information contained herein. Any use of trade, product, or firm names is for descriptive purposes only and does not imply endorsement by NYSED.