

SURFICIAL GEOLOGY OF THE SClPIO CENTER 7.5-MINUTE QUADRANGLE, CAYUGA COUNTY, NEW YORK

prepared by
James R. Leone and Andrew L. Kozlowski

Supported in part by the U.S Geological Survey's
National Cooperative Geologic Mapping Program Great Lakes Mapping Coalition Award Number G14AC00360

DESCRIPTION OF MAP UNITS

Holocene

Af	Artificial Fill (Af) Surficial sediment composed of coarse/fine and or crushed rock anthropogenically transported and used for construction purposes.
Ha	Stratified silt, sand and gravel (Ha) Sorted and stratified silt, sand, and gravel, deposited by rivers and streams. May include cobbles and boulders. Inferred as post-glacial alluvium and includes modern channel, over-bank and fan deposits
Hw	Wetland Deposit (Hw) Peat, muck, marl, silt, clay or sand deposited in association with wetland environments. Various sediments can be present at transitional boundaries from one facies to another

Pleistocene

Ps	Stratified Sand (Ps) Well sorted and stratified sand, deposited by fluvial, lacustrine or eolian processes. Inferred as deposits associated with distal glacial environments.
Plsc	Silt and Clay (Psc) Stratified, fine-grained sediment consisting of fine sand, silt and clay size particles. Inferred to be deposited in mid shore to deepwater settings of glacial lakes. May include marl, rythmites, and varves.
Pics	Cobbles to Sand (Pics) Stratified ice contacted deposits, variable coarse-grained sediment consisting of boulders to sand size particles. Inferred to be deposited along an ice-margin. May include, interbedded coarse lenses of gravel and clast supported diamictons (flow tills).
Psg	Stratified sand and gravel (Psg) Well-sorted and stratified sand and gravel. May include cobbles and boulders. Inferred to be delta, fan or lag deposits in glacial channels or near ice margins.
Pd	Diamicton (Pd) An admixture of unsorted sediment ranging from clay to boulders. Generally matrix supported, massive and clast-rich.
Pdmm	Diamicton (Pdmm) An admixture of unsorted sediment ranging from clay to boulders. Generally matrix supported, massive and clast-rich.
Pdcs	Diamicton (Pdcs) An admixture of unsorted sediment ranging from clay to boulders. Generally clast supported, massive and clast-rich.

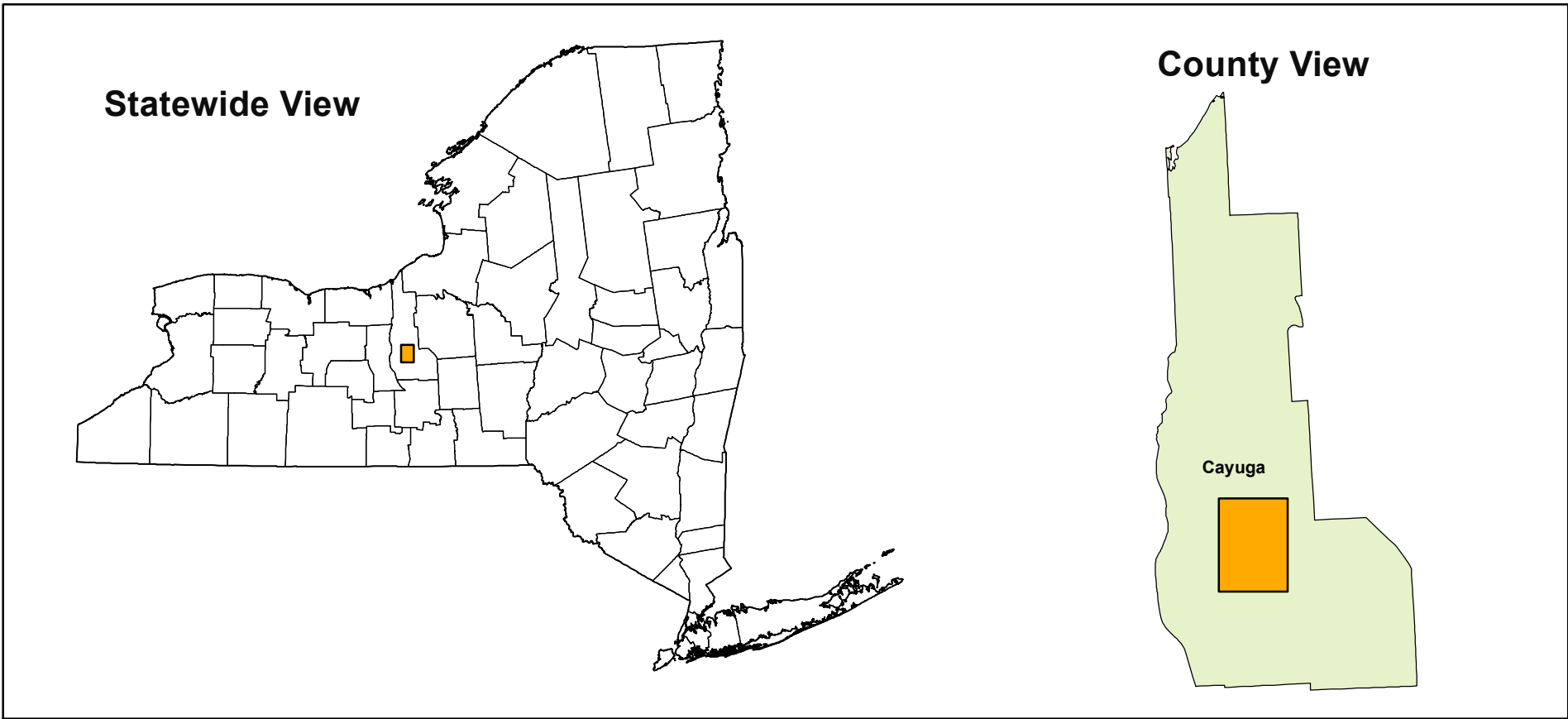
Pre-Pleistocene

Br	Bedrock (Br) Non-glacially derived, hard rock, pre-pleistocene in age. May be covered up to a meter in diamicton, sand and gravel, or sand and clay in areas marked as Br.
-----------	--

SYMBOLS

Streets	Water Bodies	NYSDEC Oil & Gas Well Location	Crevasse Fill
Highways	NYSGS Soil Sample Location	NYSBOT Boring Location	Hummocky Fill
Contours	NYSDEC Water Well Location	Drumlins	Meltwater Channels
Streams	NYSGS Borehole Location	Ice Margin	

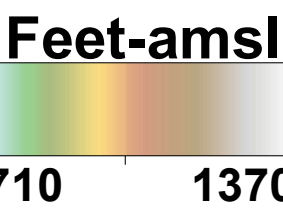
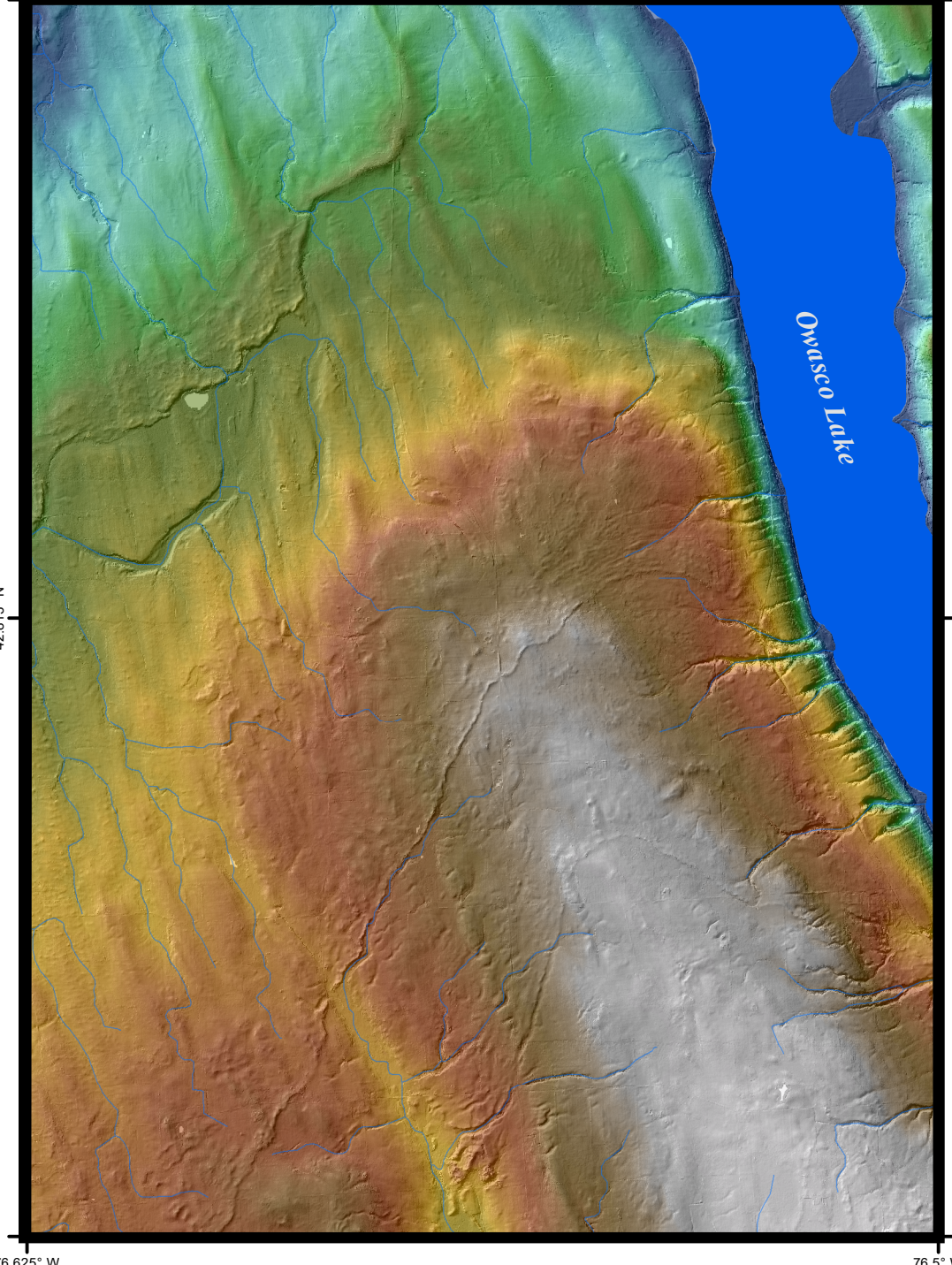
QUADRANGLE LOCATION



ADJOINING QUADRANGLES

Cayuga	Auburn	Shanawassett
Union Springs	SciPIO Center	Owasco
Shelburne	Genoa	Moravia

QUADRANGLE ELEVATION



1:75,000 scale; 2x vertical exaggeration
Shaded relief generated from 2000 Cayuga County 2-meter lidar data set.

SURFICIAL GEOLOGY OF THE SClPIO CENTER 7.5-MINUTE QUADRANGLE, CAYUGA COUNTY, NEW YORK

James R. Leone and Andrew L. Kozlowski
2015

NOTICE

This geologic map was funded in part by the USGS National Cooperative Geologic Mapping Program Great Lakes Mapping Coalition award number G14AC00360 in the year 2014.

The views and conclusions contained in this document are those of the authors and should not be interpreted as necessarily presenting the official policies, either expressed or implied, of the U.S. Government.

While every effort has been made to ensure the integrity of this digital map and the factual data upon which it is based, the New York State Education Department ("NYSED") makes no representation or warranty, expressed or implied, with respect to its accuracy, completeness, or usefulness for any particular purpose or scale. NYSED assumes no liability for damages resulting from the use of any information, apparatus, method, or process disclosed in this map and text, and urges independent site-specific verification of the information contained herein. Any use of trade, product, or firm names is for descriptive purposes only and does not imply endorsement by NYSED.