

SURFICIAL GEOLOGY OF THE ROUNTOUT RESEVOIR 7.5-MINUTE QUADRANGLE, SULLIVAN AND ULSTER COUNTIES, NEW YORK

prepared by

Brian C. Bird, Caleb Booth and Karl J. Backhaus

Supported in part by the U.S Geological Survey Cooperative Agreement Number G14AC00360
National Cooperative Geologic Mapping Program (STATEMAP)

DESCRIPTION OF MAP UNITS

Holocene

Af	Artificial Fill (Af) Surficial sediment composed of coarse/fine and or crushed rock anthropogenically transported and used for construction purposes.
Ha	Stratified silt, sand and gravel (Ha) Sorted and stratified silt, sand, and gravel, deposited by rivers and streams. May include cobbles and boulders. Inferred as post-glacial alluvium and includes modern channel, over-bank and fan deposits
Hw	Wetland Deposit (Hw) Peat, muck, marl, silt, clay or sand deposited in association with wetland environments. Various sediments can be present at transitional boundaries from one facies to another

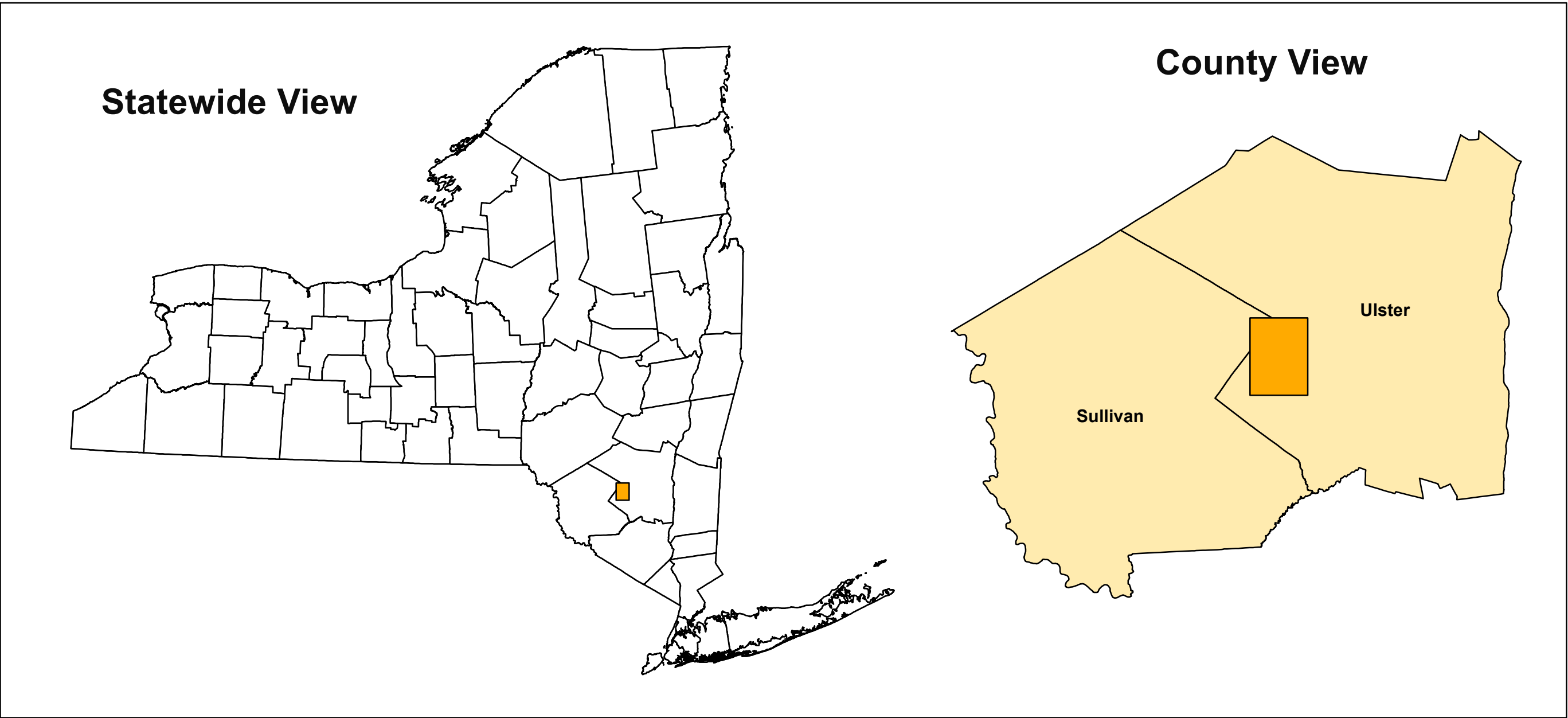
Pleistocene

Ps	Stratified Sand (Ps) Well sorted and stratified sand, deposited by fluvial, lacustrine or eolian processes. Inferred as deposits associated with distal glacial environments.
Psg	Stratified sand and gravel (Psg) Well-sorted and stratified sand and gravel. May include cobbles and boulders. Inferred to be delta, fan or lag deposits in glacial channels or near former ice margins.
Pd	Diamicton (Pd) An admixture of unsorted sediment ranging from clay to boulders. Generally matrix supported, massive and clast-rich.

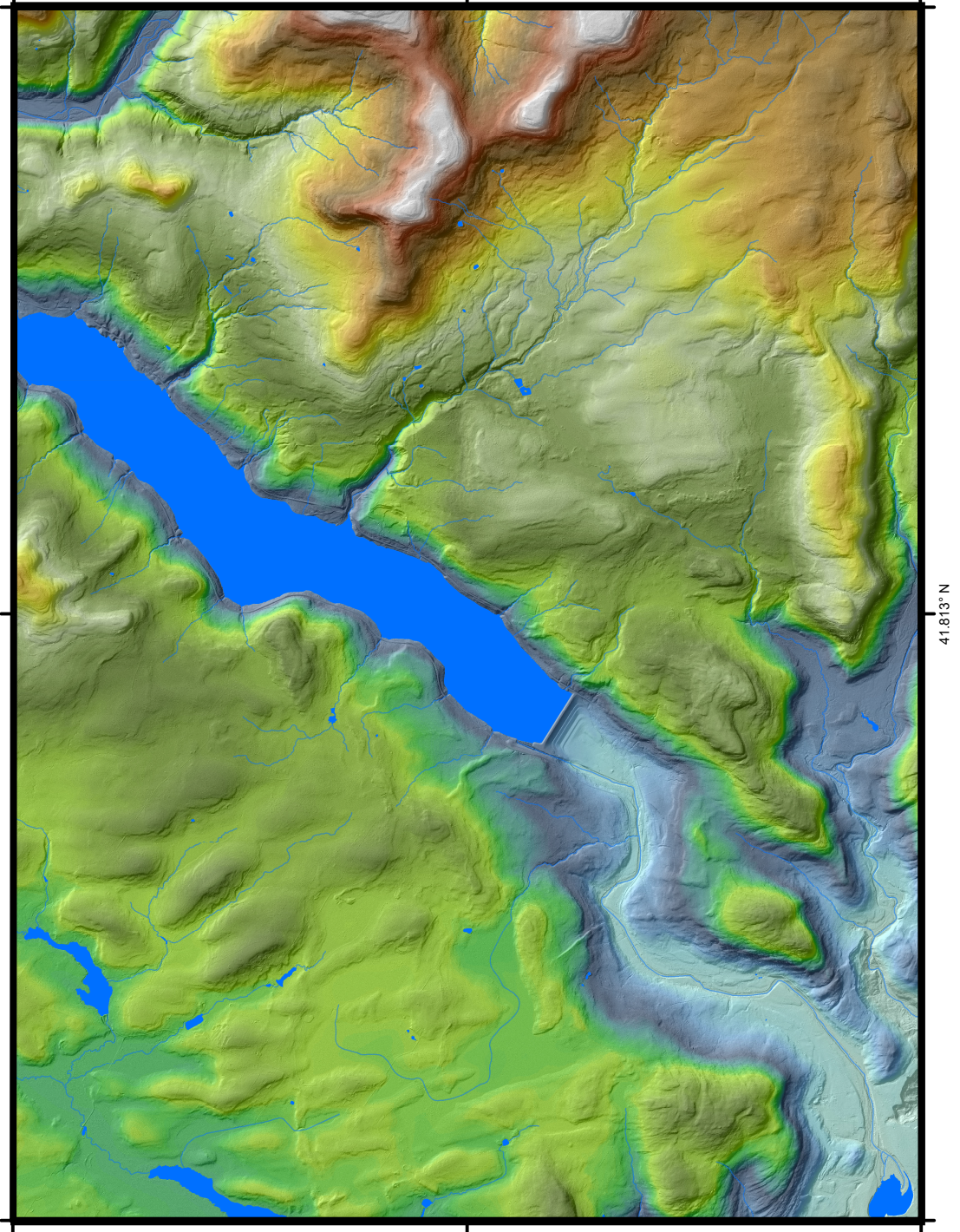
Pre-Pleistocene

Br	Bedrock (Br) Non-glacially derived, hard rock, pre-pleistocene in age. May be covered up to a meter in diamicton, sand and gravel, or sand and clay in areas marked as Br.
-----------	--

QUADRANGLE LOCATION



QUADRANGLE ELEVATION



Feet-amsl
390 2375
1:75,000 scale; 2x vertical exaggeration
Shaded relief generated from 2009 West of Hudson 2m, 2014 3 County 1m and NYS 10m lidar data sets.

New York State Museum Map & Chart No. 87
ISSN:0097-3793 ; ISBN:978-1-55557-334-8

SYMBOLS

— Streets	Water Bodies	Contours
— Highways	Streams	NYSDEC Water Well Location
— County Lines		Ice Margins

ADJOINING QUADRANGLES

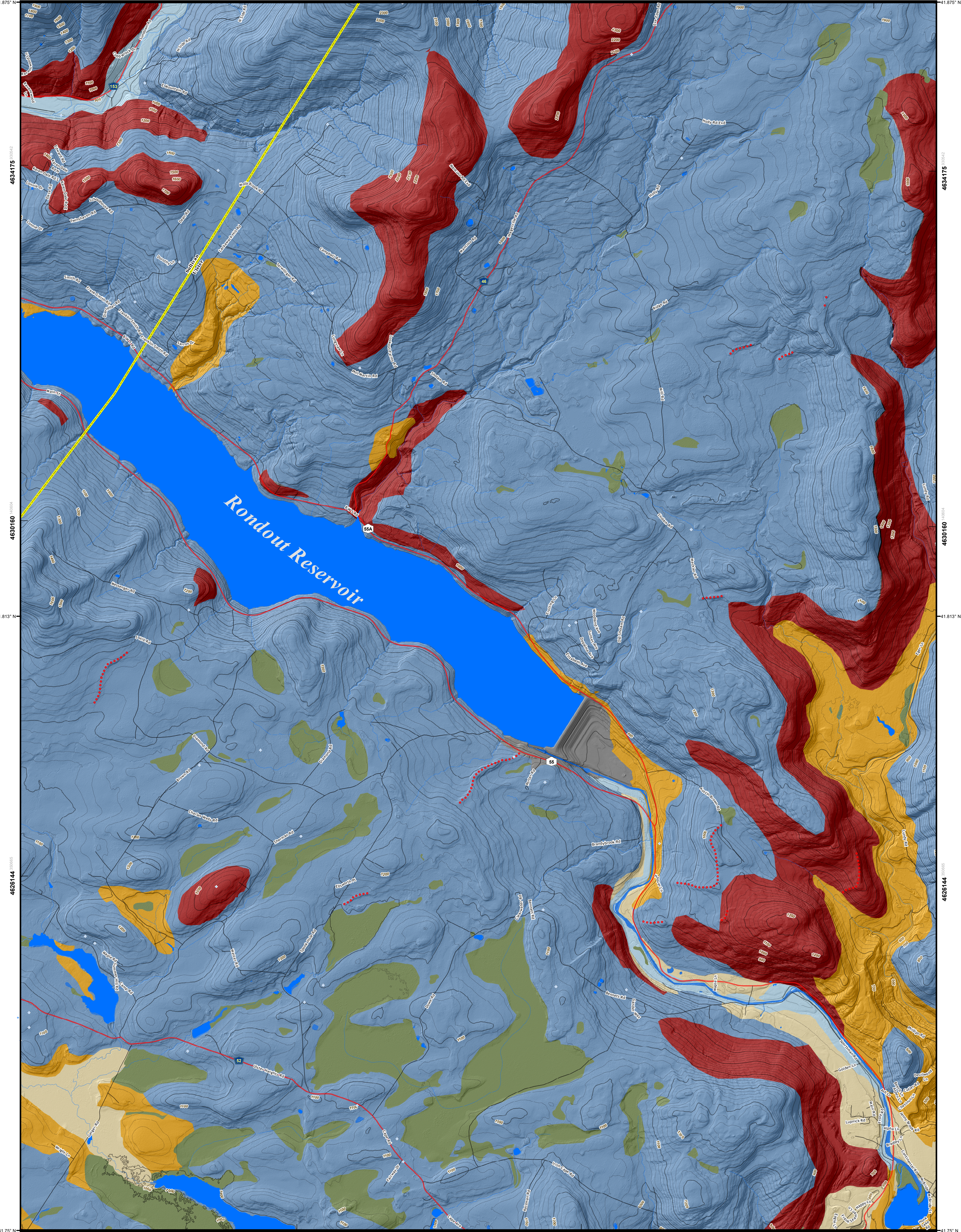
Caryville	Peekskill Mountain	West Shokan
Grahamsville	Rountout Reservoir	Katkokon
Woodbridge	Ellenville	Nephtoch

NOTICE

This geologic map was funded in part by the USGS National Cooperative Geologic Mapping Program STATEMAP award number G14AC00360 in the year 2014.

The views and conclusions contained in this document are those of the authors and should not be interpreted as necessarily presenting the official policies, either expressed or implied, of the U.S. Government.

While every effort has been made to ensure the integrity of this digital map and the factual data upon which it is based, the New York State Education Department ("NYSED") makes no representation or warranty, expressed or implied, with respect to its accuracy, completeness, or usefulness for any particular purpose or scale. NYSED assumes no liability for damages resulting from the use of any information, apparatus, method, or process disclosed in this map and text, and urges independent site-specific verification of the information contained herein. Any use of trade, product, or firm names is for descriptive purposes only and does not imply endorsement by NYSED.

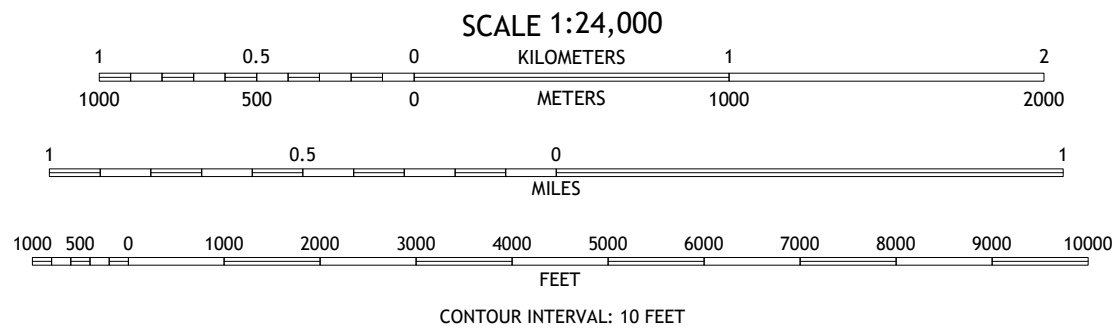


Universal Transverse Mercator, Zone 18 N
North American Datum of 1983

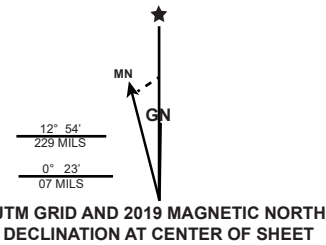
Hydrology and plimetry layers from the
New York State DOT Raster Quadrangle separates for Sullivan and Ulster Counties
(<https://gis.ny.gov/dotdata/inventories/member.cfm?OrganizationID=108>)
Geographic data layers from 2019 TIGERLine shapes for transportation
and hydrography
(<https://www.census.gov/gov-geo/tiger/tigerline/index.php>)

Shaded relief from 2009 West of Hudson 2m, 2014 3 County 1m,
and NYS 10m DEM
(<http://gis.ny.gov/elevation/index.cfm>)

Magnetic declination from the NOAA online Declination Calculator:
<http://www.ngdc.noaa.gov/gemmag-web/declination>



Geologic mapping by R. Young, 2014
Digital data and cartography by B. Bird, C. Booth and
K. Backhaus, 2014, 2021.



SURFICIAL GEOLOGY OF THE ROUNTOUT RESEVOIR 7.5-MINUTE QUADRANGLE, SULLIVAN AND ULSTER COUNTIES, NEW YORK

Richard Young
2014