

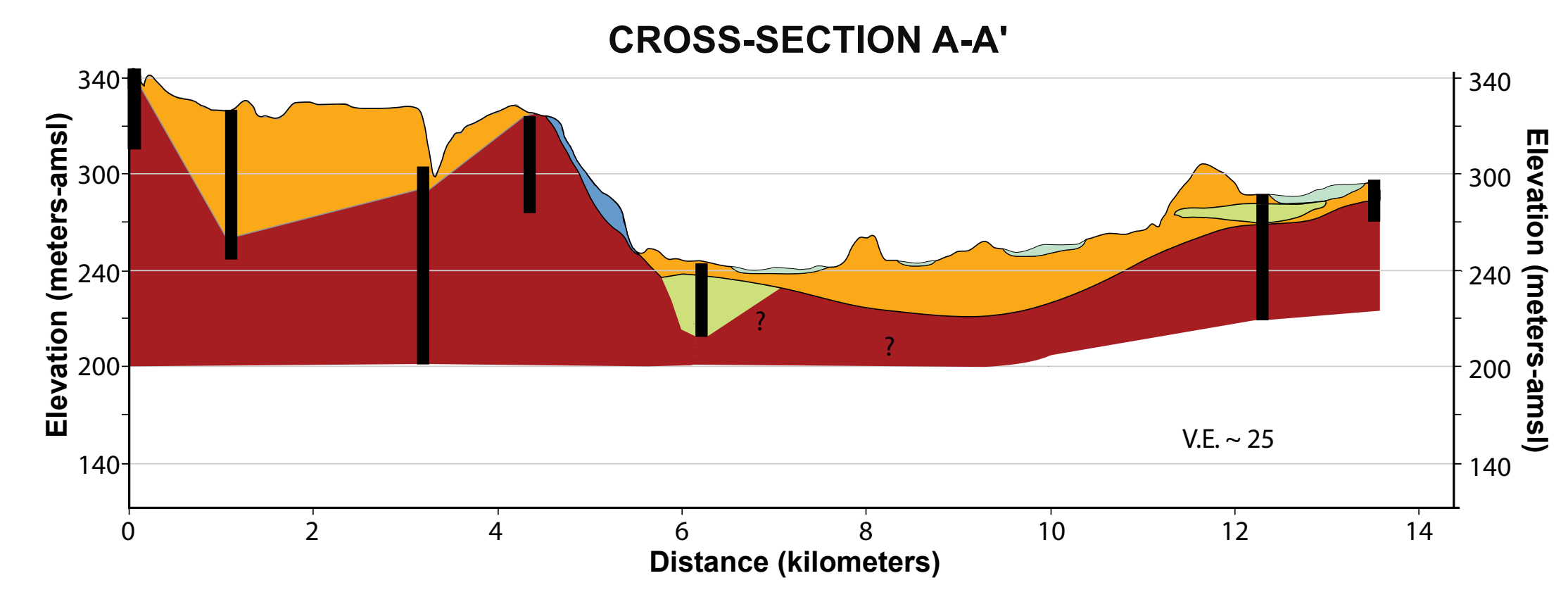
# SURFICIAL GEOLOGY OF THE MORAVIA 7.5-MINUTE QUADRANGLE, CAYUGA AND TOMPKINS COUNTIES, NEW YORK

prepared by  
Brian C. Bird, Andrew L. Kozlowski and Karl J. Backhaus

Supported in part by the U.S Geological Survey's  
National Cooperative Geologic Mapping Program STATEMAP Award Number G15AC00340

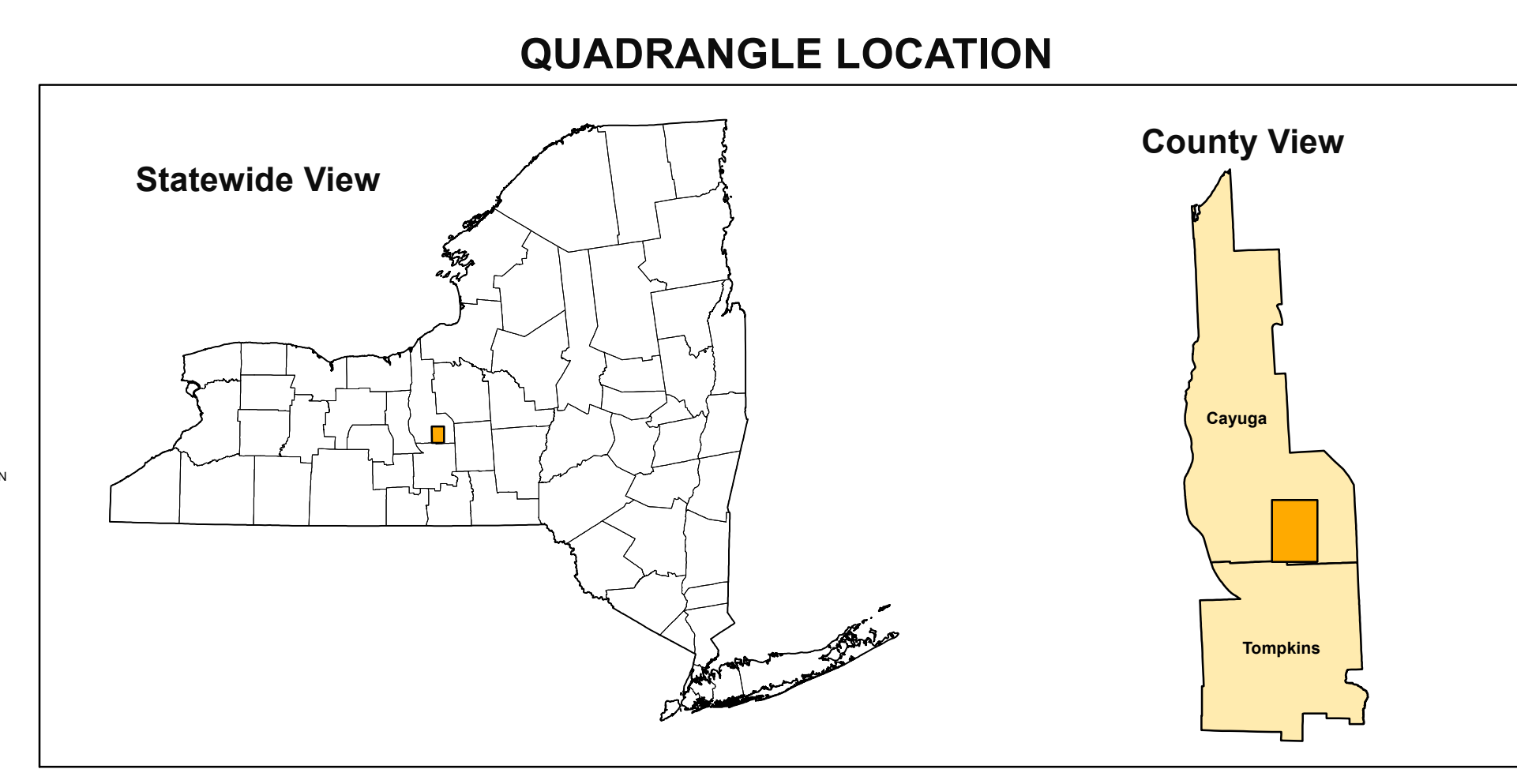
## DESCRIPTION OF MAP UNITS

<b>Holocene</b>	
<b>Ha</b>	<b>Stratified silt, sand and gravel (Ha)</b> Sorted and stratified silt, sand, and gravel, deposited by rivers and streams. May include cobbles and boulders. Inferred as post-glacial alluvium and includes modern channel, over-bank and fan deposits
<b>Hw</b>	<b>Wetland Deposit (Hw)</b> Peat, muck, marl, silt, clay or sand deposited in association with wetland environments. Various sediments can be present at transitional boundaries from one facies to another
<b>Pleistocene</b>	
<b>Plsc</b>	<b>Silt and Clay (Psc)</b> Stratified, fine-grained sediment consisting of fine sand, silt and clay size particles. Inferred to be deposited in mid shore to deepwater settings of glacial lakes. May include marl, rhythmites, and varves.
<b>Pics</b>	<b>Cobbles to Sand (Pics)</b> Stratified ice contacted deposits, variable coarse-grained sediment consisting of boulders to sand size particles. Inferred to be deposited along an ice-margin. May include, interbedded coarse lenses of gravel and clast supported diamictons (flow tills).
<b>Psg</b>	<b>Stratified sand and gravel (Psg)</b> Well-sorted and stratified sand and gravel. May include cobbles and boulders. Inferred to be delta, fan or lag deposits in glacial channels or near ice margins.
<b>Pd</b>	<b>Diamicton (Pd)</b> An admixture of unsorted sediment ranging from clay to boulders. Generally matrix supported, massive and clast-rich.
<b>Pdcs</b>	<b>Diamicton (Pdcs)</b> An admixture of unsorted sediment ranging from clay to boulders. Generally clast supported, massive and clast-rich.
<b>Pre-Pleistocene</b>	
<b>Br</b>	<b>Bedrock (Br)</b> Non-glacially derived, hard rock, pre-pleistocene in age. May be covered up to a meter in diamicton, sand and gravel, or sand and clay in areas marked as Br.



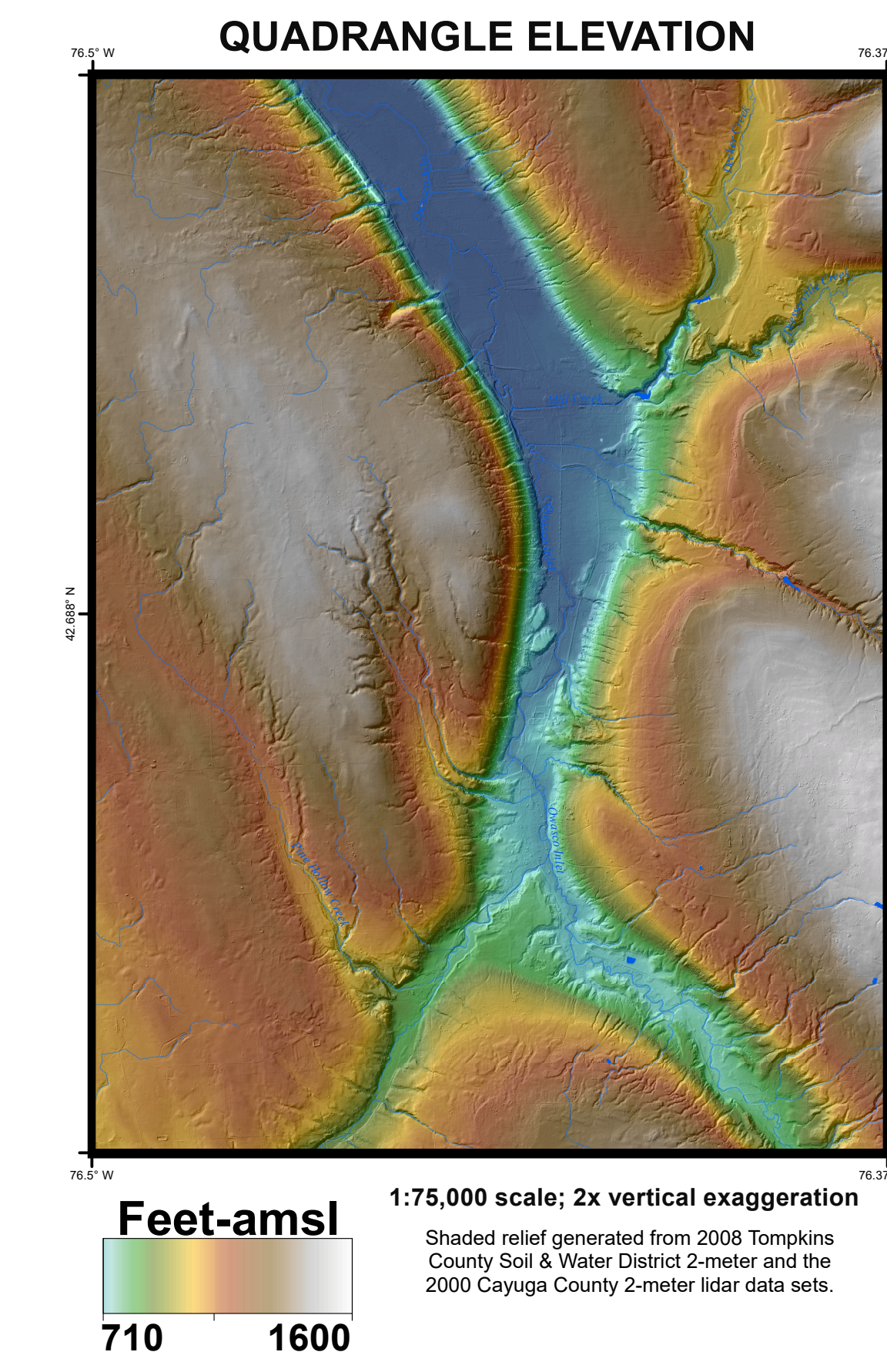
## SYMBOLS

Streets	Water Bodies	NYSOG Soil Sample Location	Drumlins
Highways	Streams	NYSDEC Water Well Location	Meltwater Channels
Airport Runway	Contours	NYSDEC Boring Location	Ice Margin
Moravia_CountyLines	Cross-Section Line	NYSDEC Oil & Gas Well Location	Fan Deposits



## ADJOINING QUADRANGLES

Sagoy Center	Owasco	Shattford
Genoa	Moravia	Sampsonville
Ludlowville	West Groton	Groton



# SURFICIAL GEOLOGY OF THE MORAVIA 7.5-MINUTE QUADRANGLE, CAYUGA AND TOMPKINS COUNTIES, NEW YORK

Brian C. Bird and Andrew L. Kozlowski  
2016

**NOTICE**  
This geologic map was funded in part by the USGS National Cooperative Geologic Mapping Program Great Lakes Mapping Coalition award number G15AC00340 in the year 2015.  
The views and conclusions contained in this document are those of the authors and should not be interpreted as necessarily presenting the official policies, either expressed or implied, of the U.S. Government.  
While every effort has been made to ensure the integrity of this digital map and the factual data upon which it is based, the New York State Education Department ("NYSED") makes no representation or warranty expressed or implied, with respect to its accuracy, completeness, or usefulness for any particular purpose or scale. NYSED assumes no liability for damages resulting from the use of any information, apparatus, method, or process disclosed in this map and text, and urges independent site-specific verification of the information contained herein. Any use of trade, product, or firm names is for descriptive purposes only and does not imply endorsement by NYSED.